

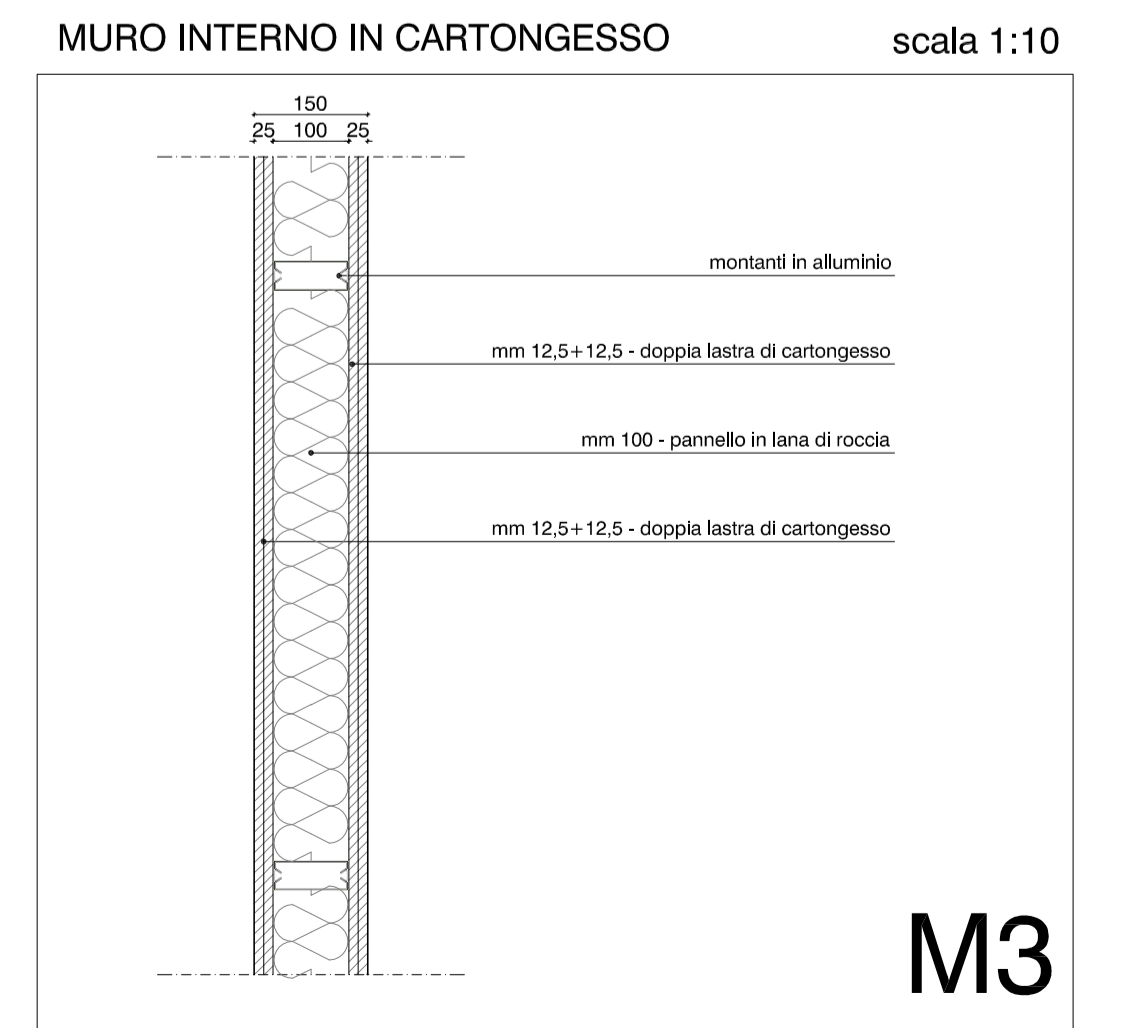
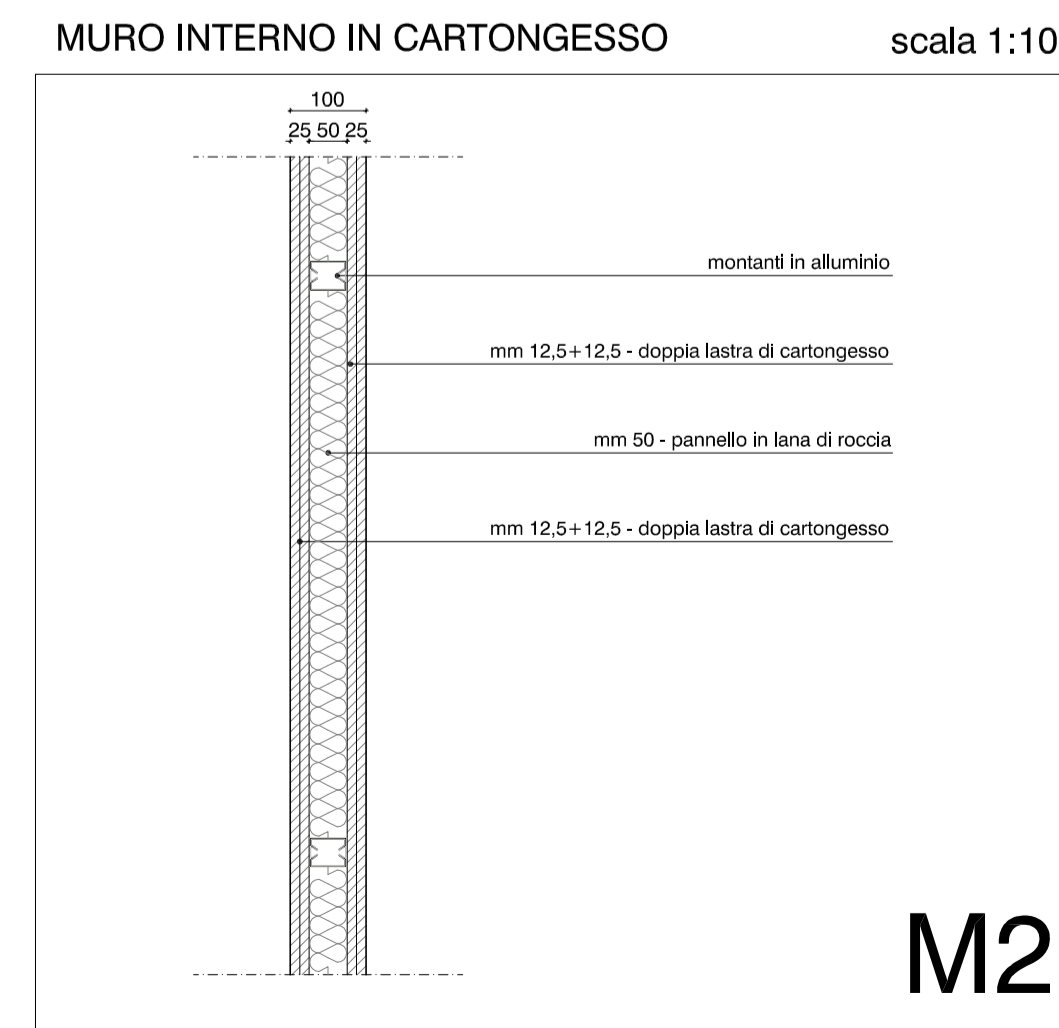
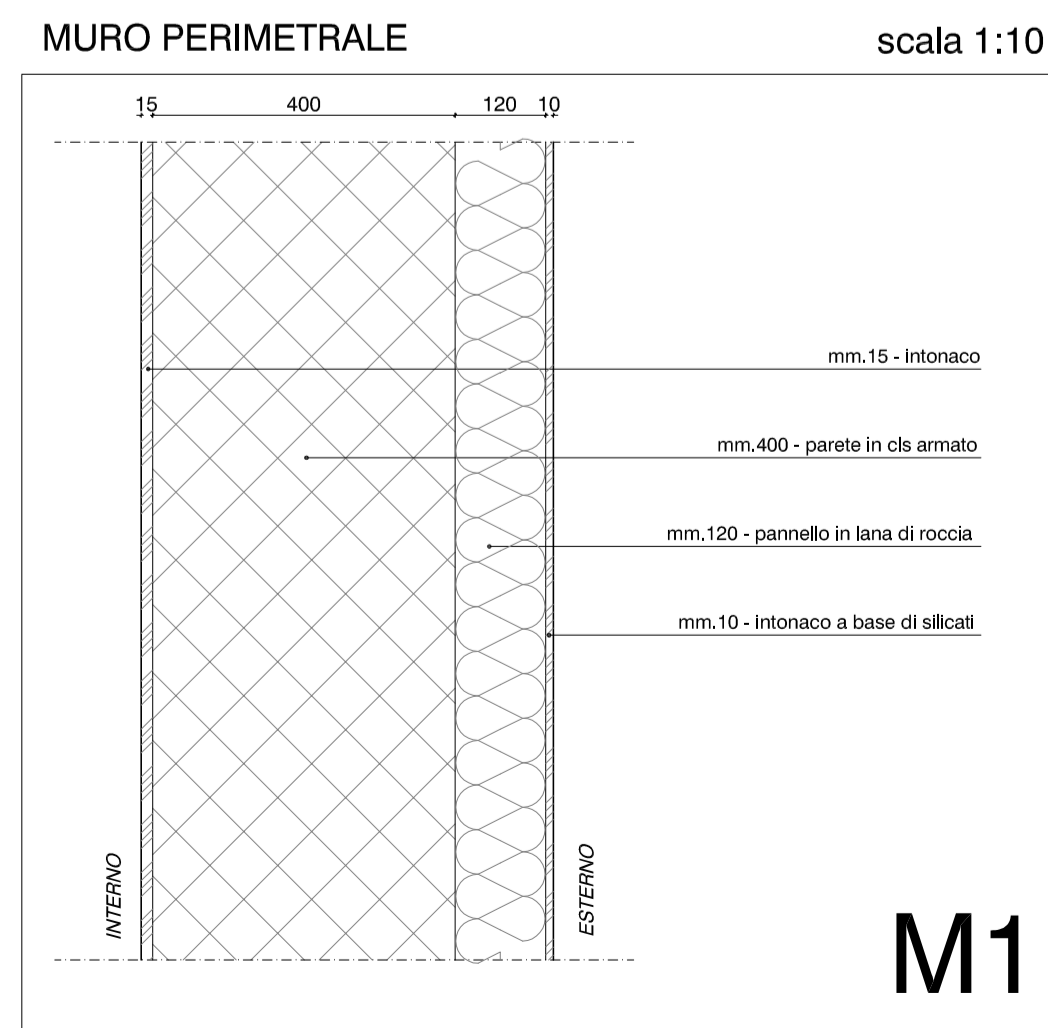
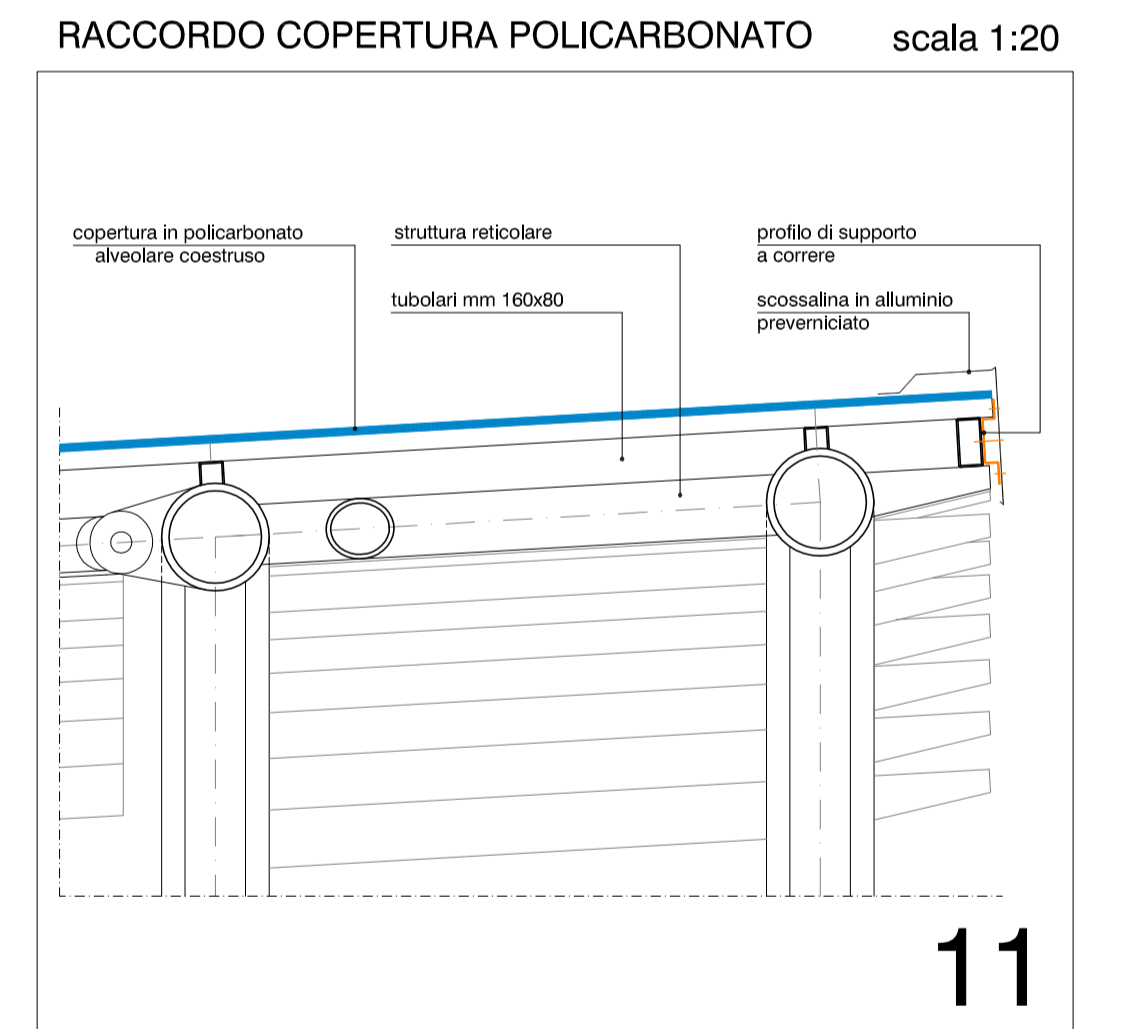
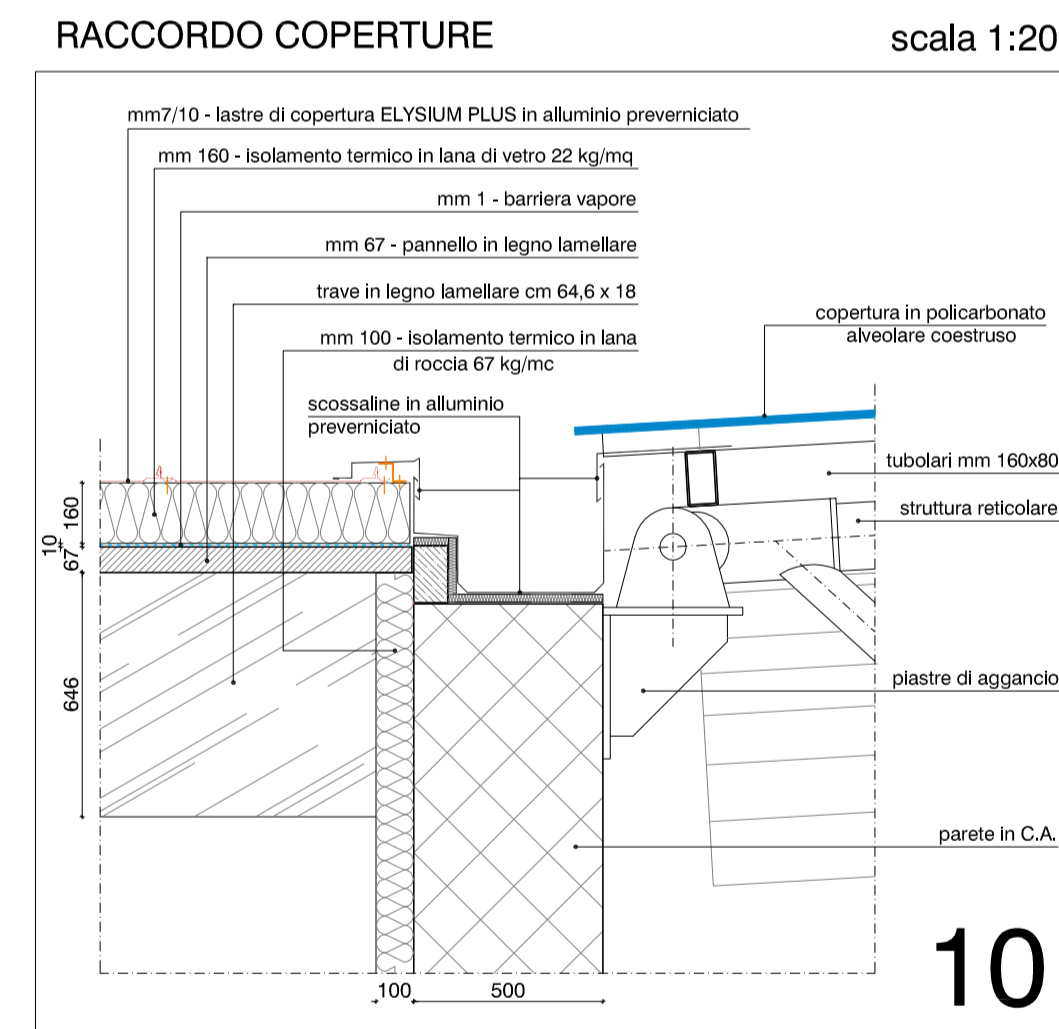
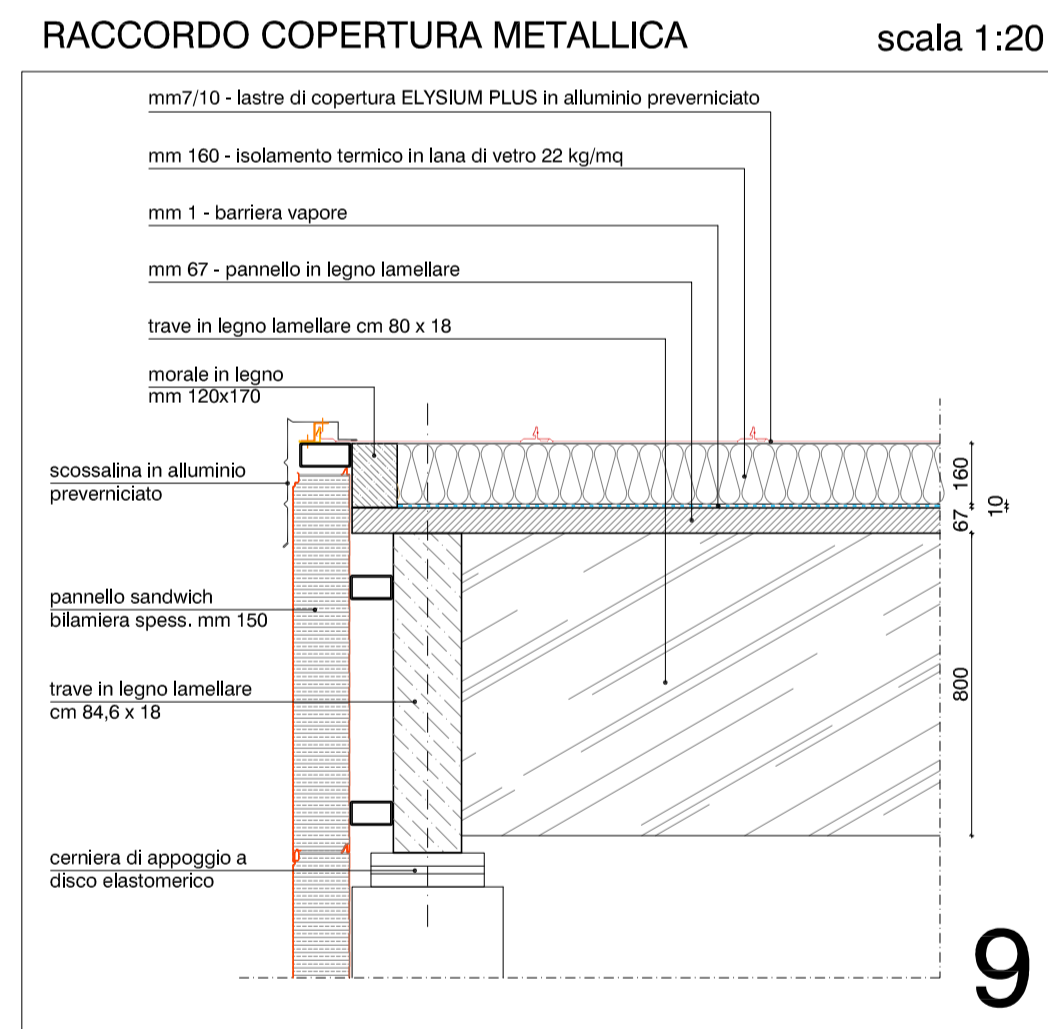
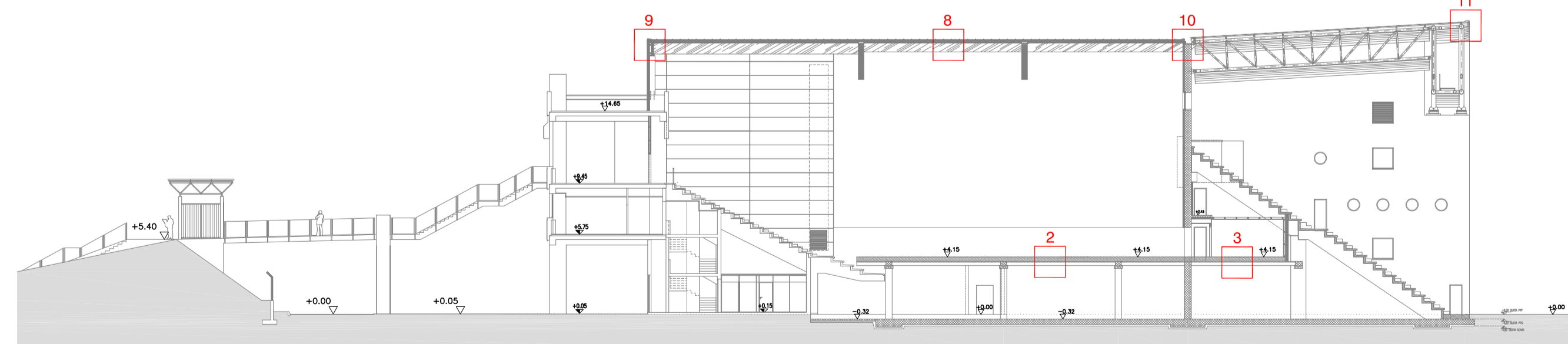
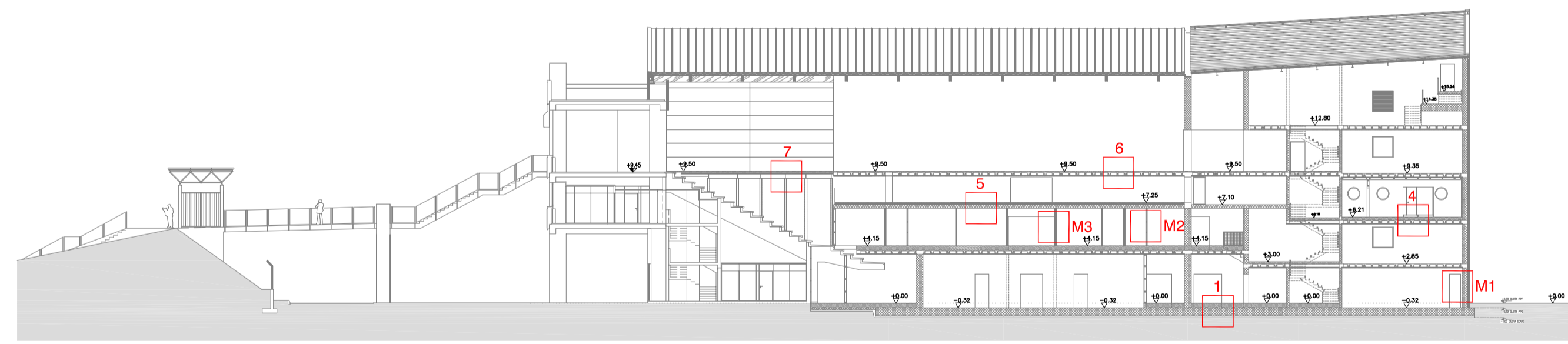
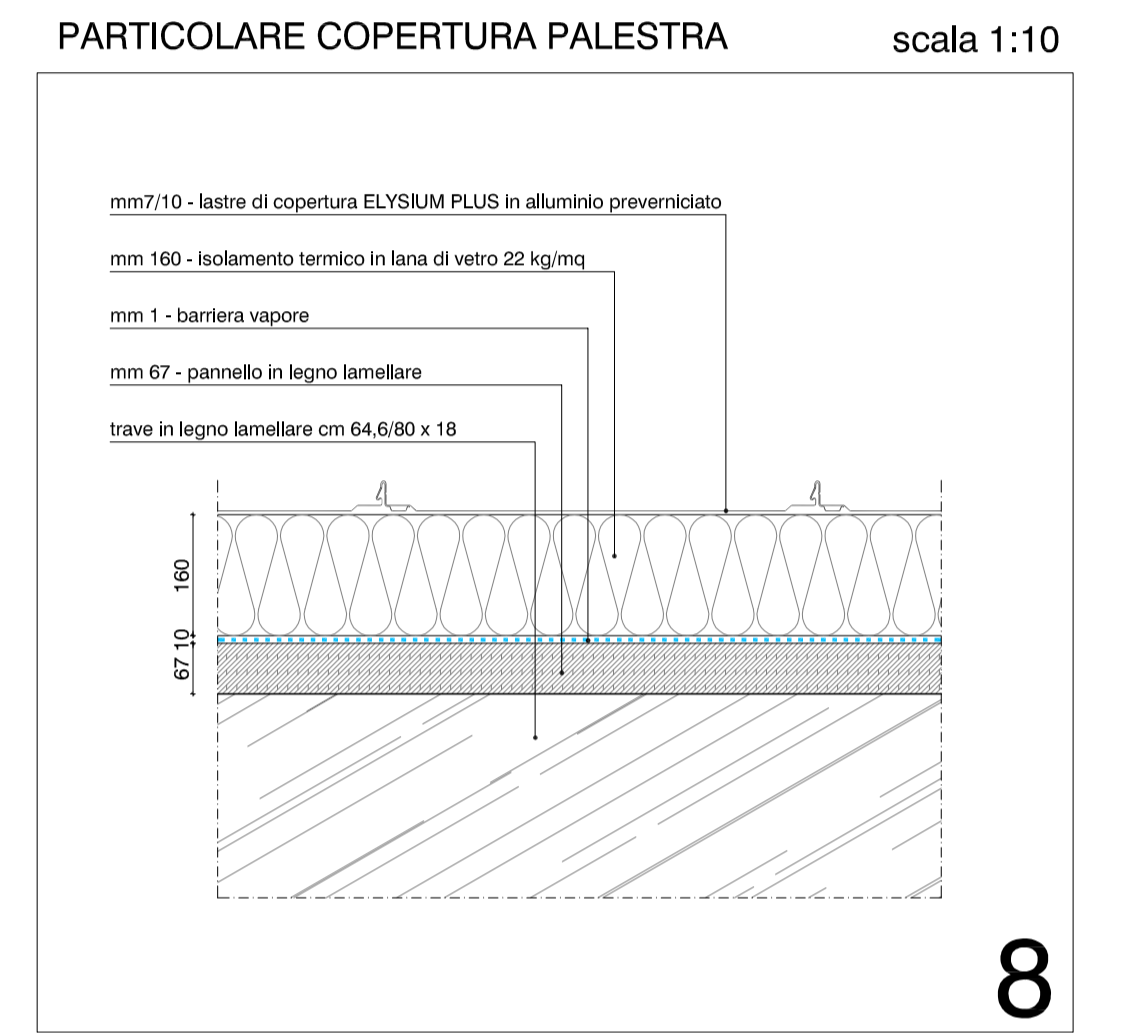
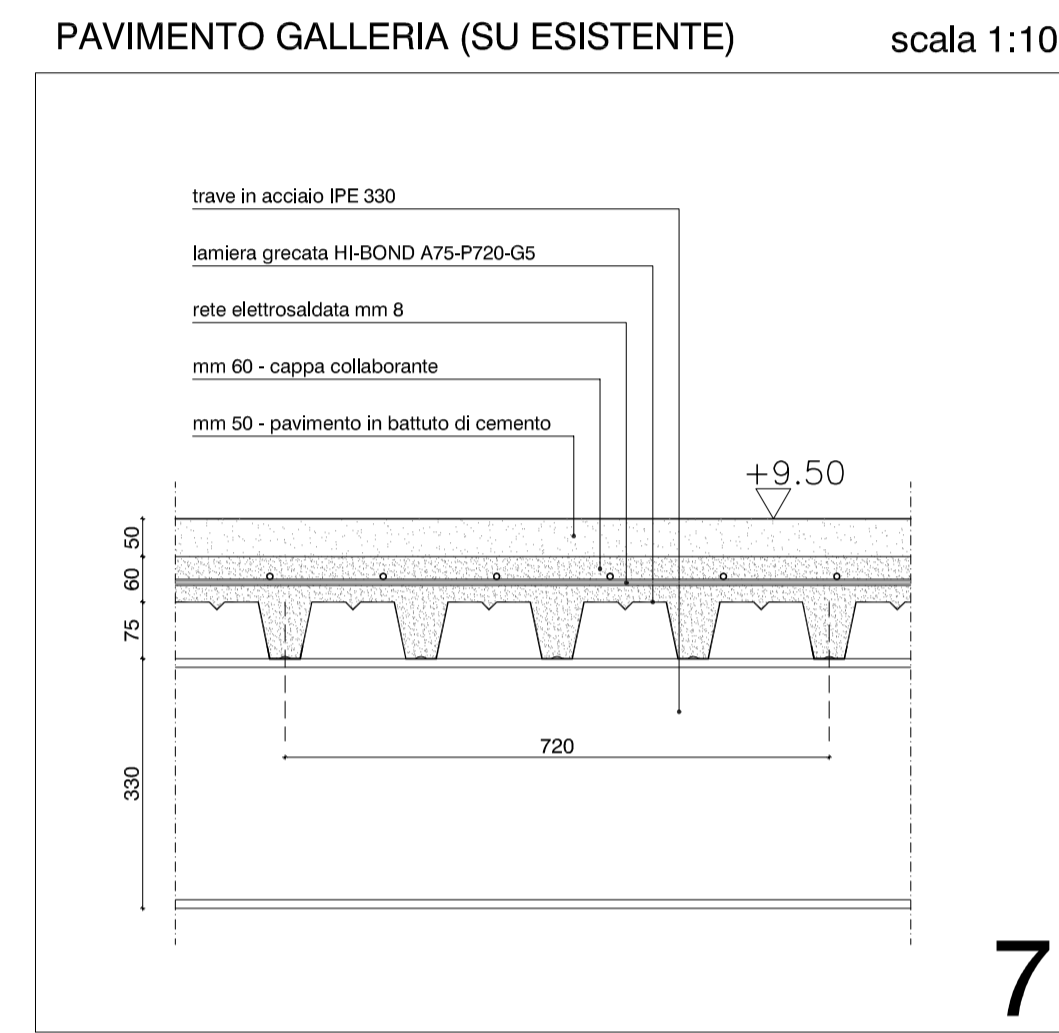
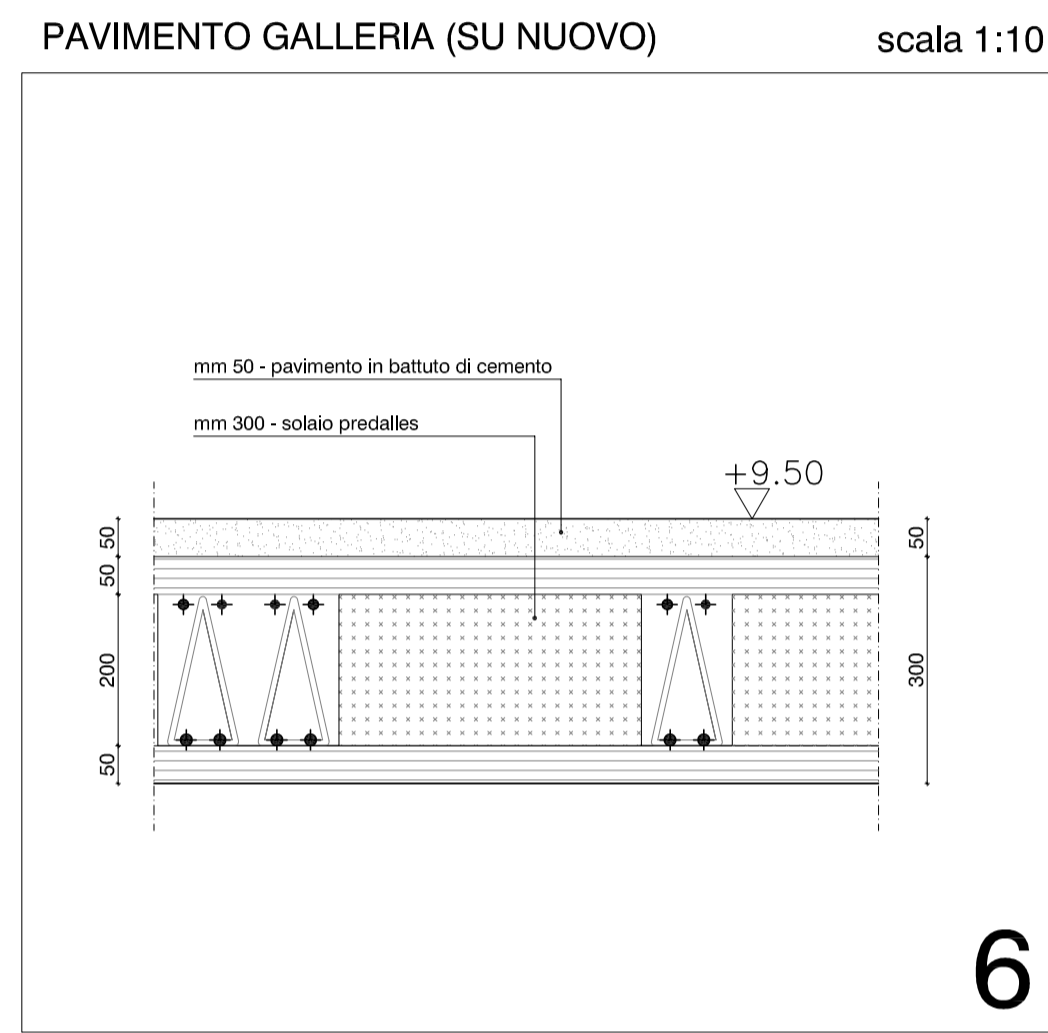
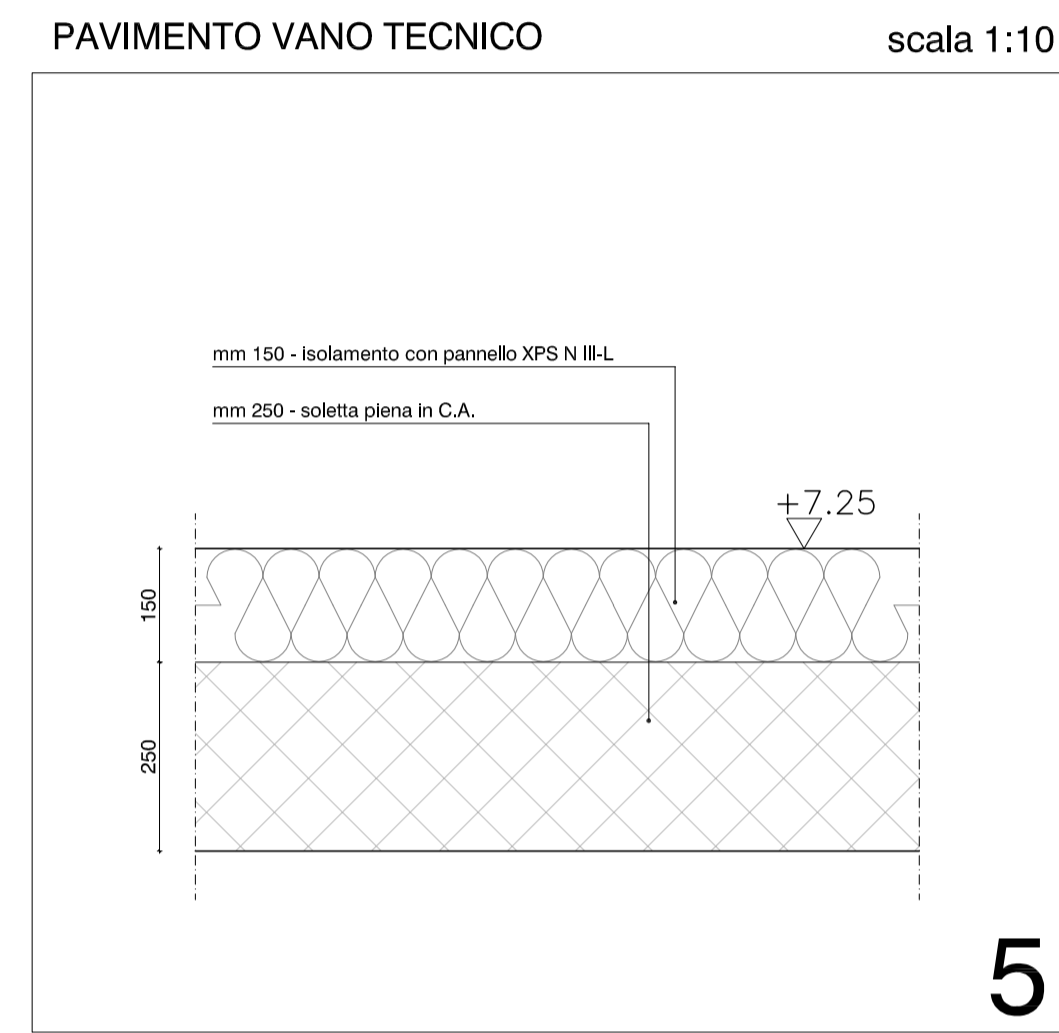
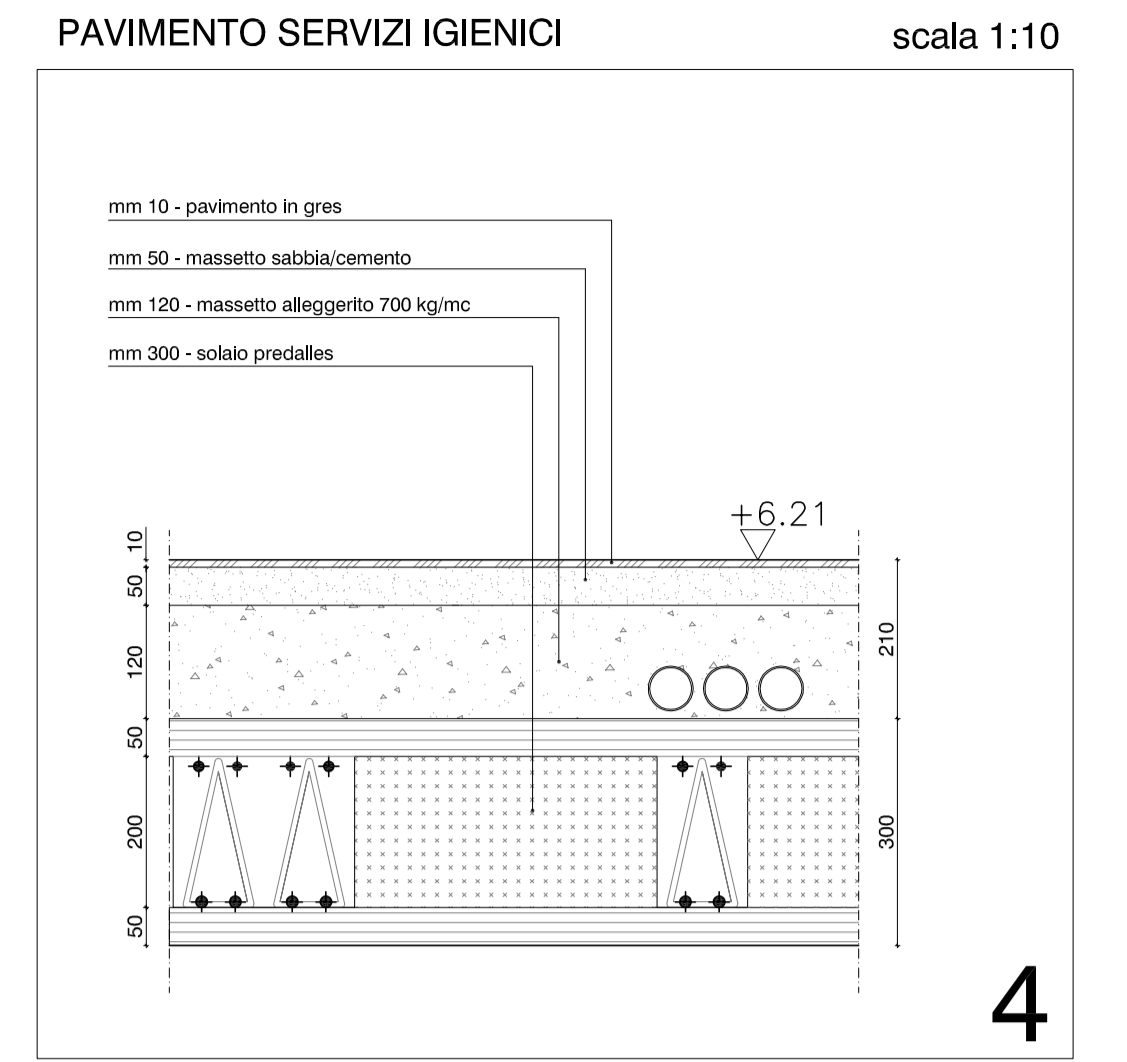
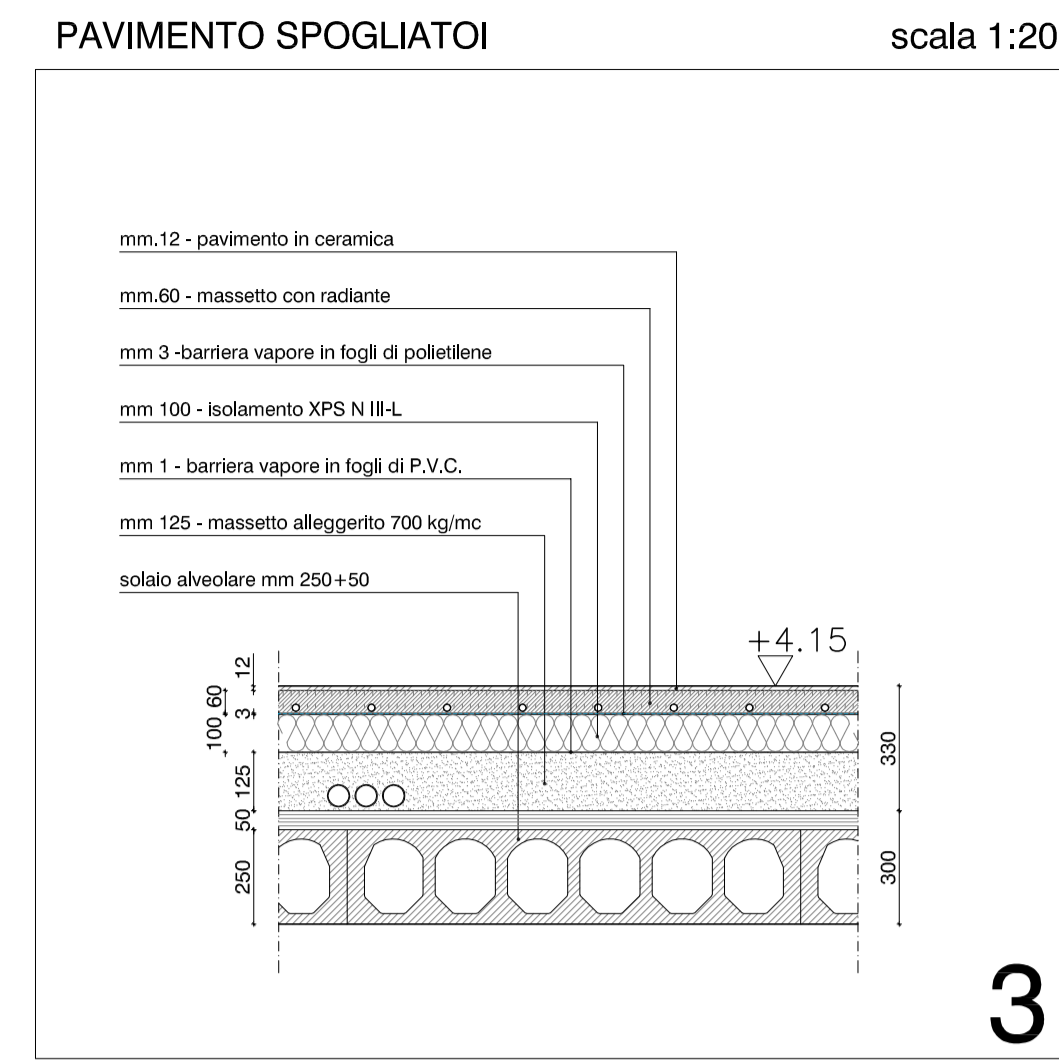
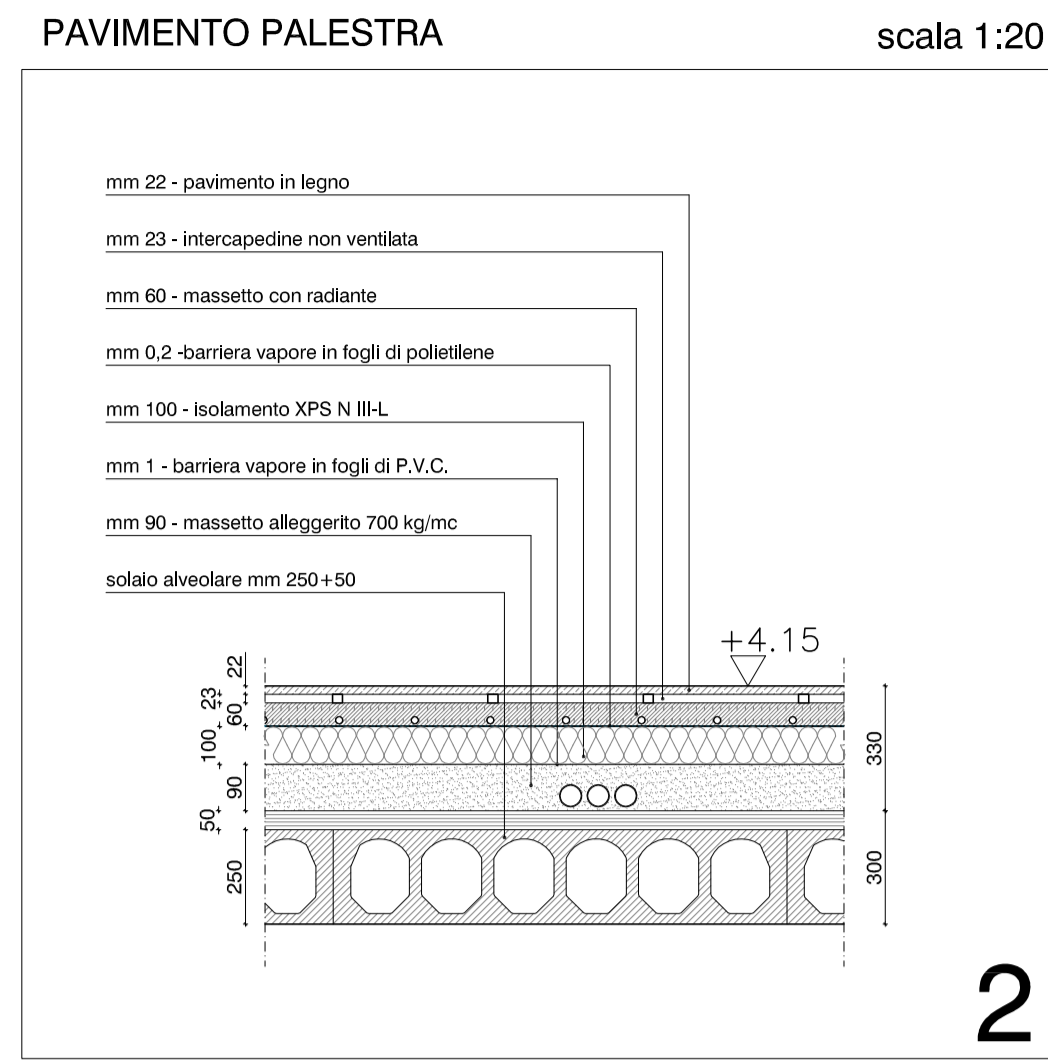
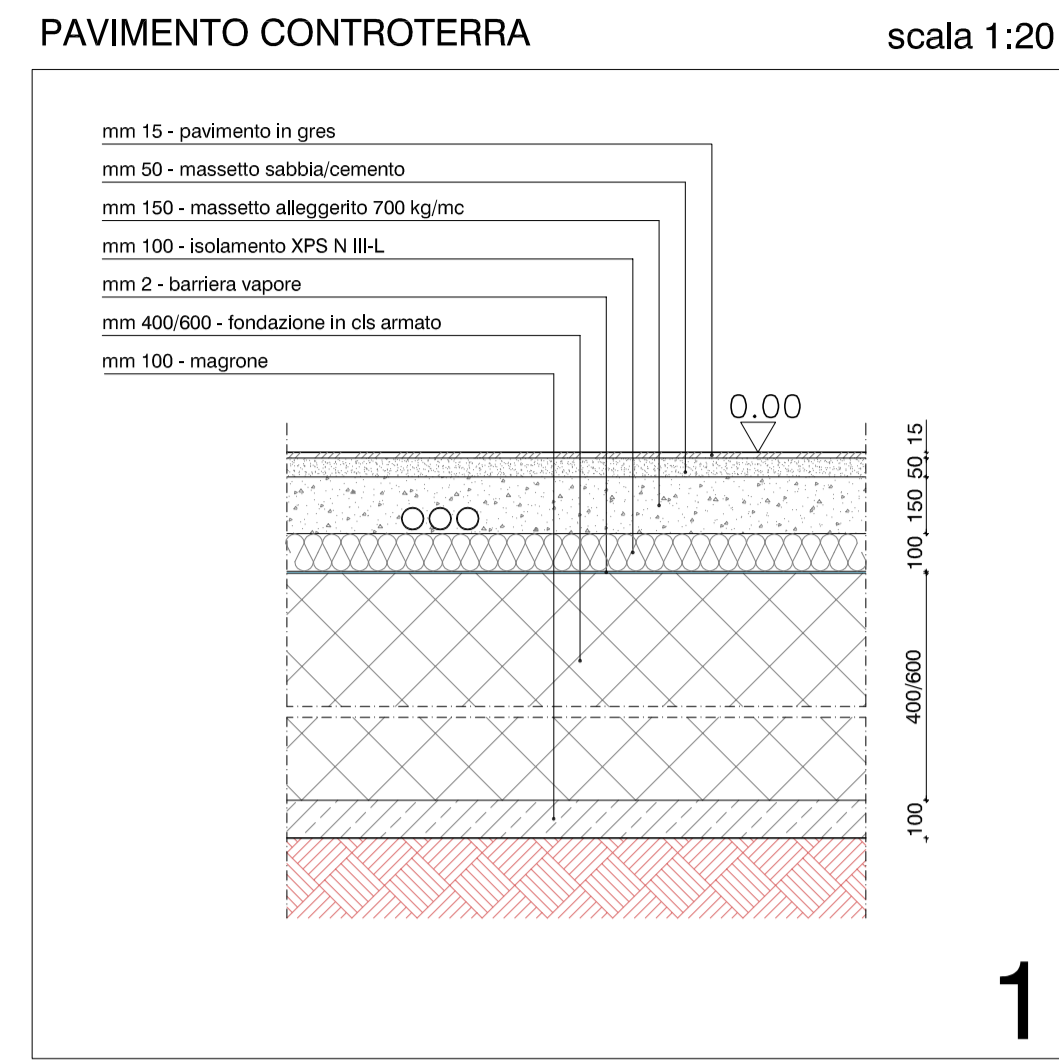
**COMUNE DI PADOVA**  
**SETTORE LAVORI PUBBLICI**



**RIQUALIFICAZIONE LATO SUD DELLO STADIO EUGANEO**  
**CON NUOVO PALAZZETTO PER IL BASKET,**  
**NUOVO PALAZZETTO POLIFUNZIONALE**  
**E NUOVA CURVA FATTORI**

**PROGETTO ESECUTIVO**

CODICE OPERA		DATA
LLPP EDP 2019/163 - 2019/164 - 2019/165		Maggio 2020
DESCRIZIONE ELABORATO		NUMERO
TIPOLOGIE SEZIONI CON STRATIGRAFIE		APPR_22_AR
IL PROGETTISTA	IL RESPONSABILE UNICO DEL PROCEDIMENTO	IL CAPO SETTORE
Ing. Claudio Rossi	Arch. Stefano Benvegnù	Ing. Emanuele Nichele
ASSISTENZA ALLA PROGETTAZIONE ESECUTIVA	PROGETTO STRUTTURALE	PROGETTO IMPIANTI MECCANICI
Studio Muratori & Zanon arch. Giulio Muratori arch. Federico Muratori arch. Nadia Scarabottolo arch. Matteo Martin	Arch. Cristian Lazzarin	P.I. Antonio Brunello Ing. Aurelio Brunello
	PROGETTO IMPIANTI ELETTRICI	CONSULENZA AUTORIZZAZIONI ENTI
	Ing. Sergio Masuzzo	Studio Bonsemlante



**M1**

**M2**

**M3**

**COMUNE DI PADOVA**  
SETTORE LAVORI PUBBLICI

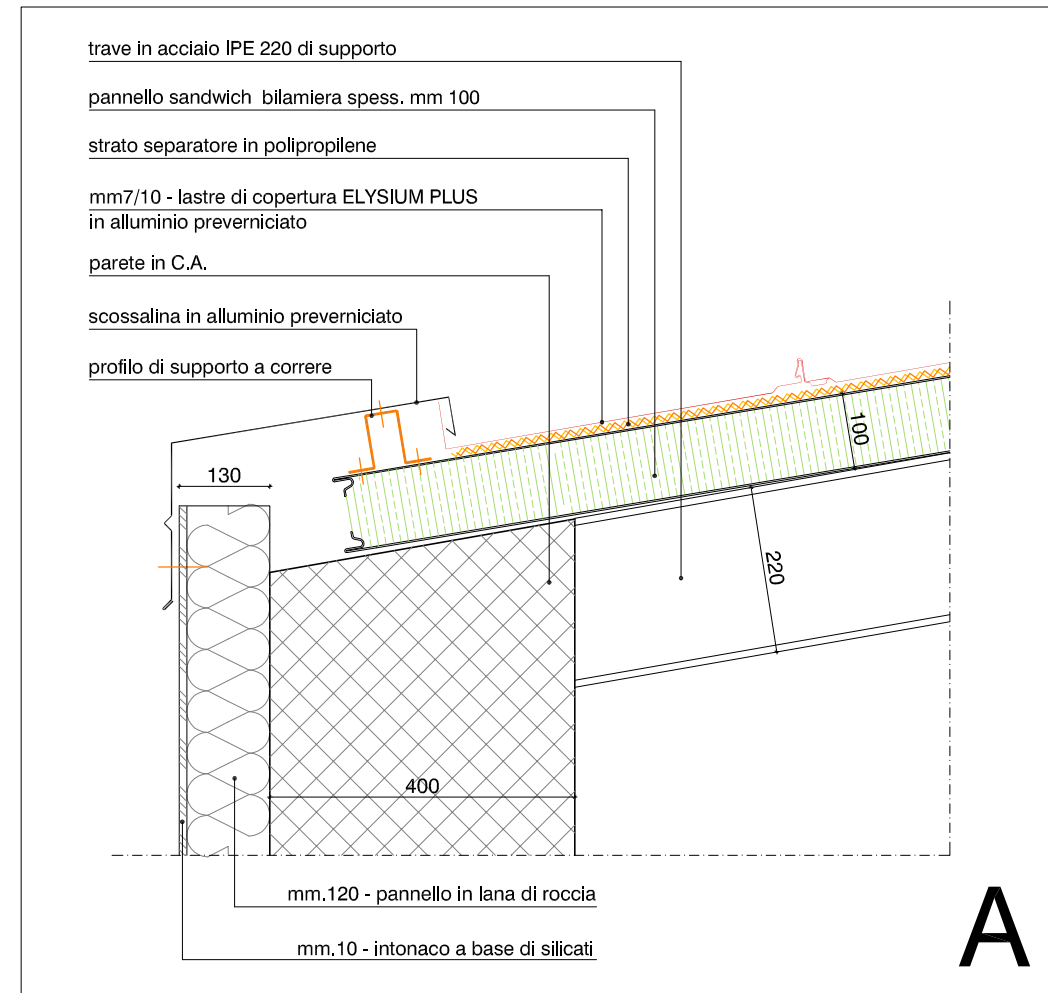


**RIQUALIFICAZIONE LATO SUD DELLO STADIO EUGANEO  
CON NUOVO PALAZZETTO PER IL BASKET,  
NUOVO PALAZZETTO POLIFUNZIONALE  
E NUOVA CURVA FATTORI**

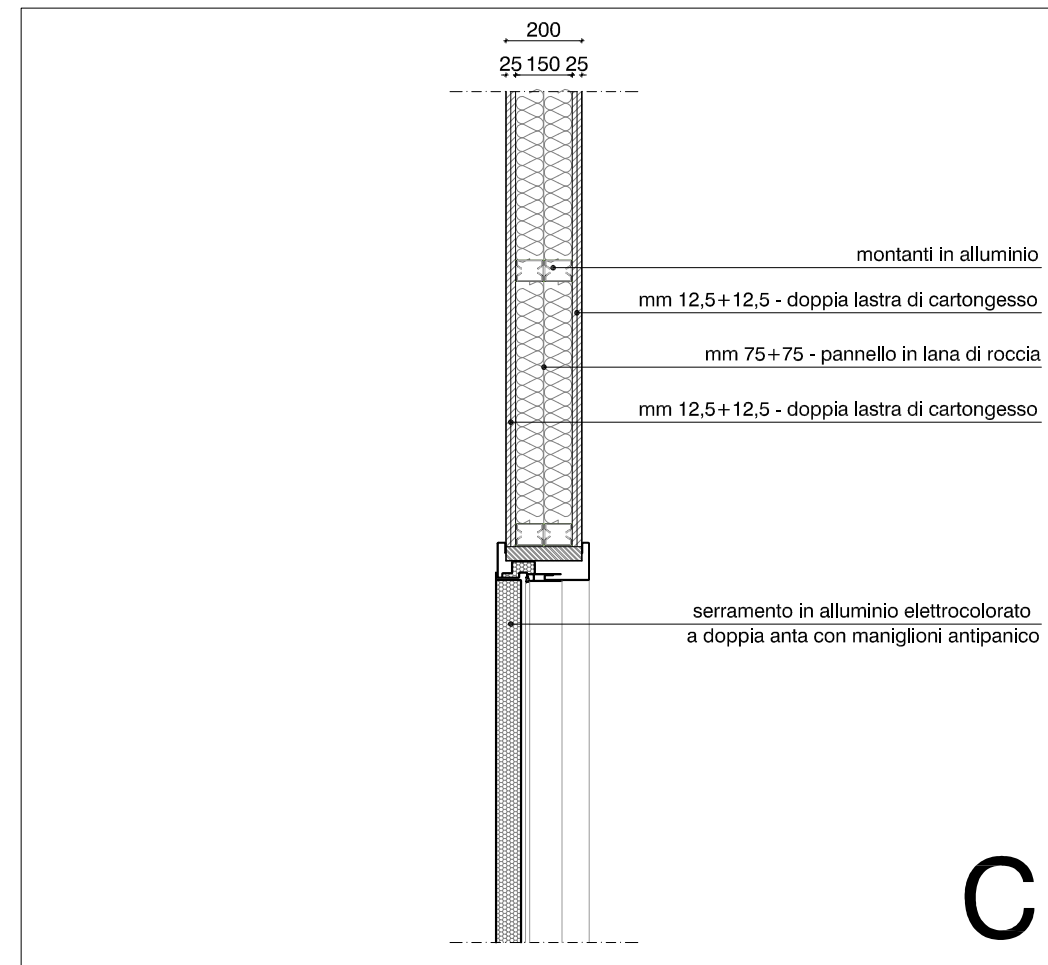
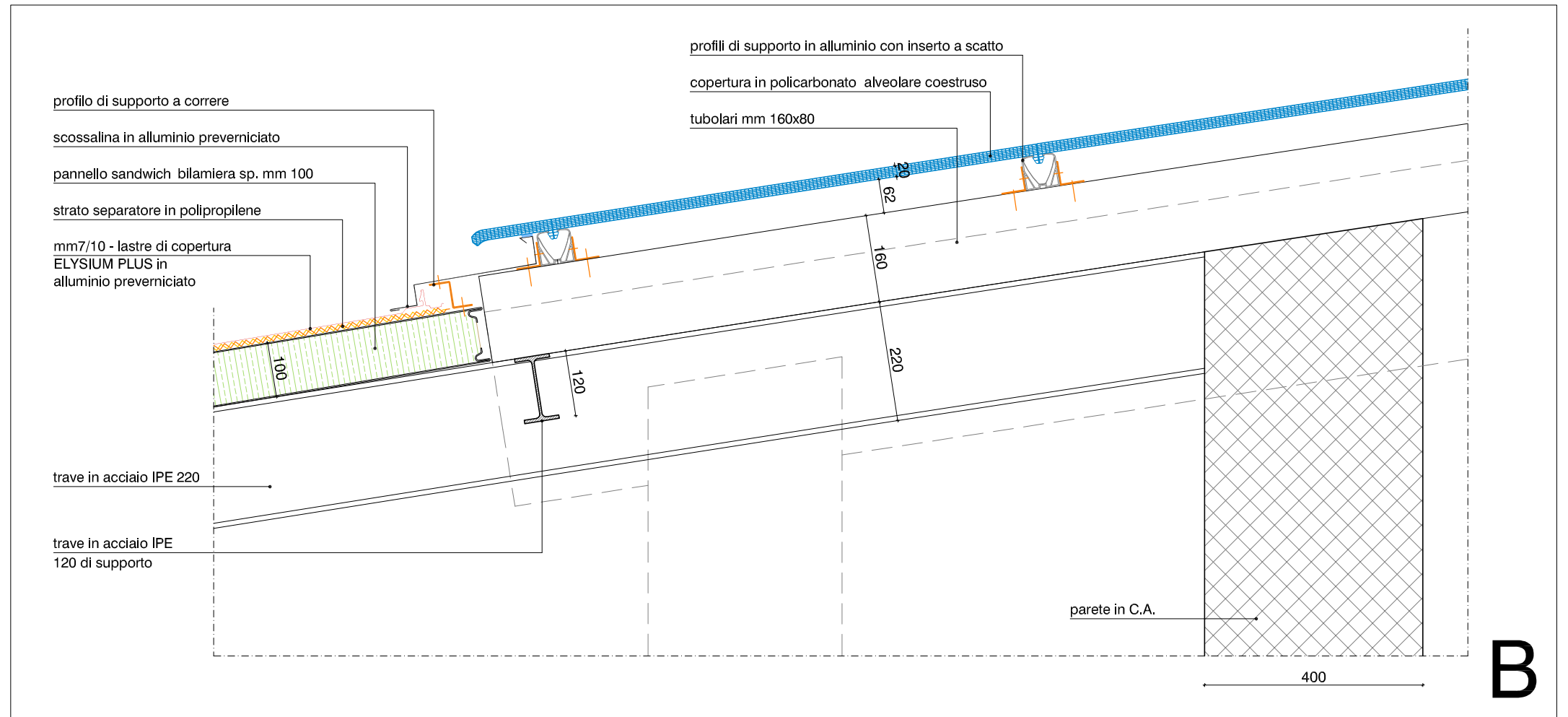
**PROGETTO ESECUTIVO**

CODICE OPERA		DATA
LLPP EDP 2019/163 - 2019/164 - 2019/165		Maggio 2020
DESCRIZIONE ELABORATO		NUMERO
TIPOLOGIE SEZIONI CON STRATIGRAFIE		APPR_22.BIS_AR
IL PROGETTISTA	IL RESPONSABILE UNICO DEL PROCEDIMENTO	IL CAPO SETTORE
Ing. Claudio Rossi	Arch. Stefano Benvegnù	Ing. Emanuele Nichele
ASSISTENZA ALLA PROGETTAZIONE ESECUTIVA	PROGETTO STRUTTURALE	PROGETTO IMPIANTI MECCANICI
Studio Muratori & Zanon arch. Giulio Muratori arch. Federico Muratori arch. Nadia Scarabottolo arch. Matteo Martin	Arch. Cristian Lazzarin	P.I. Antonio Brunello Ing. Aurelio Brunello
	PROGETTO IMPIANTI ELETTRICI	CONSULENZA AUTORIZZAZIONI ENTI
	Ing. Sergio Masuzzo	Studio Bonsembiante

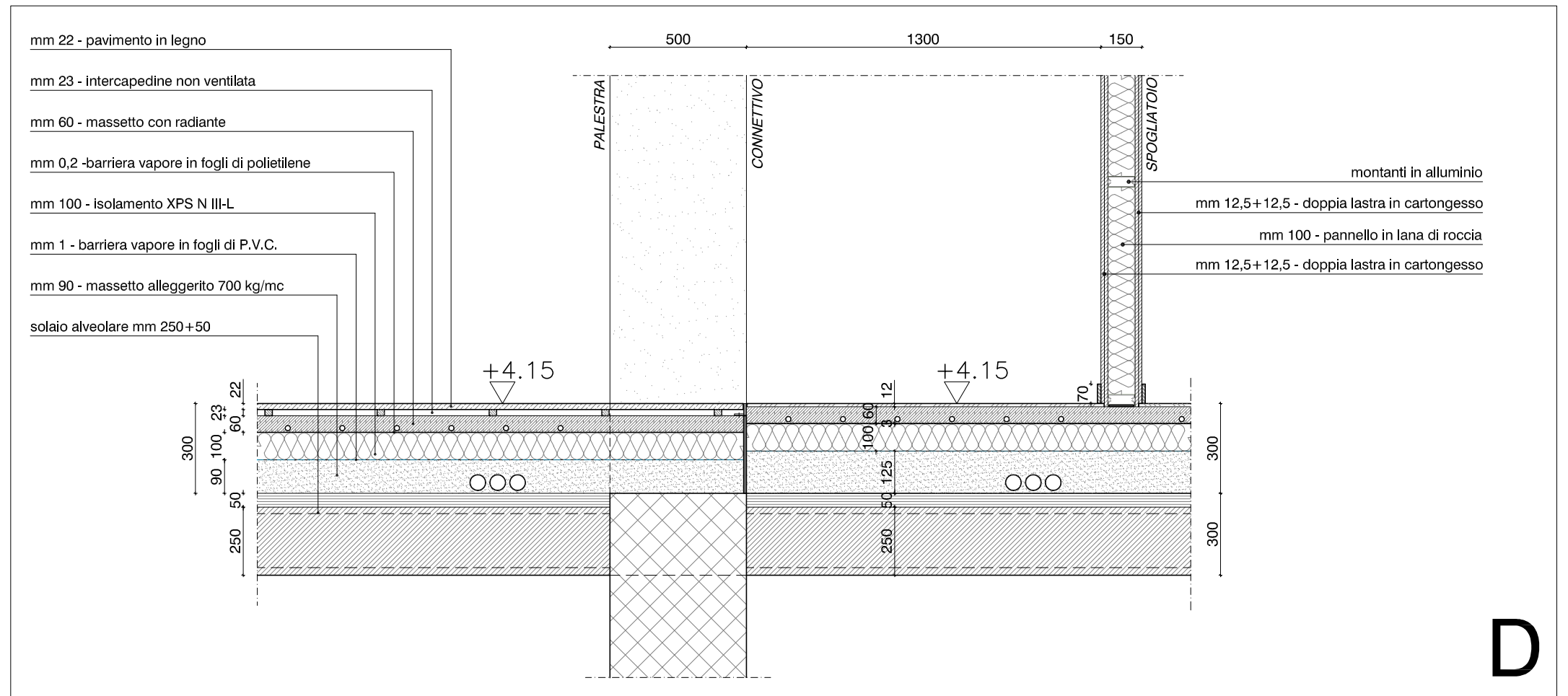
RACCORDO COPERTURA FRONTE NORD scala 1:20



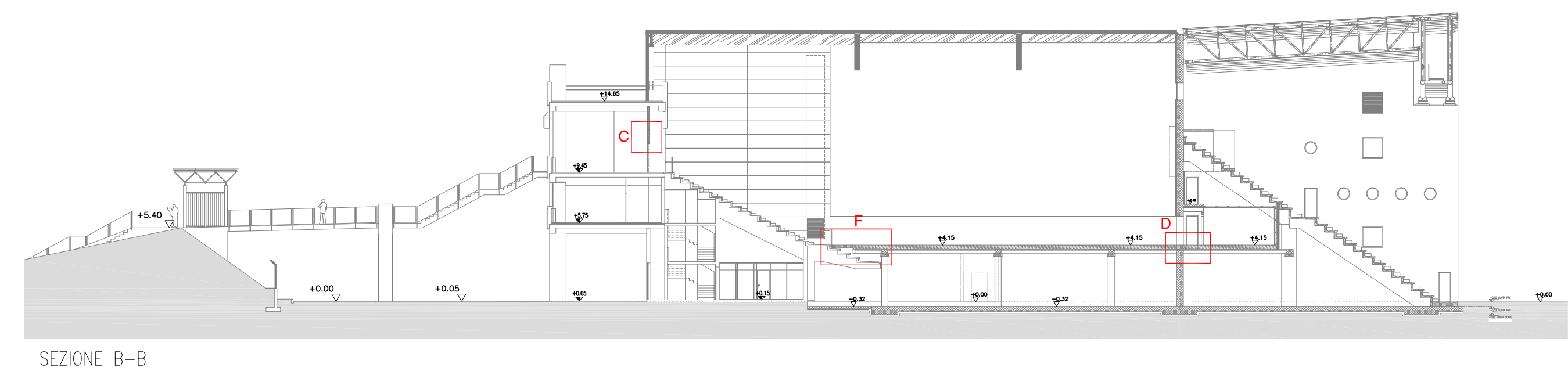
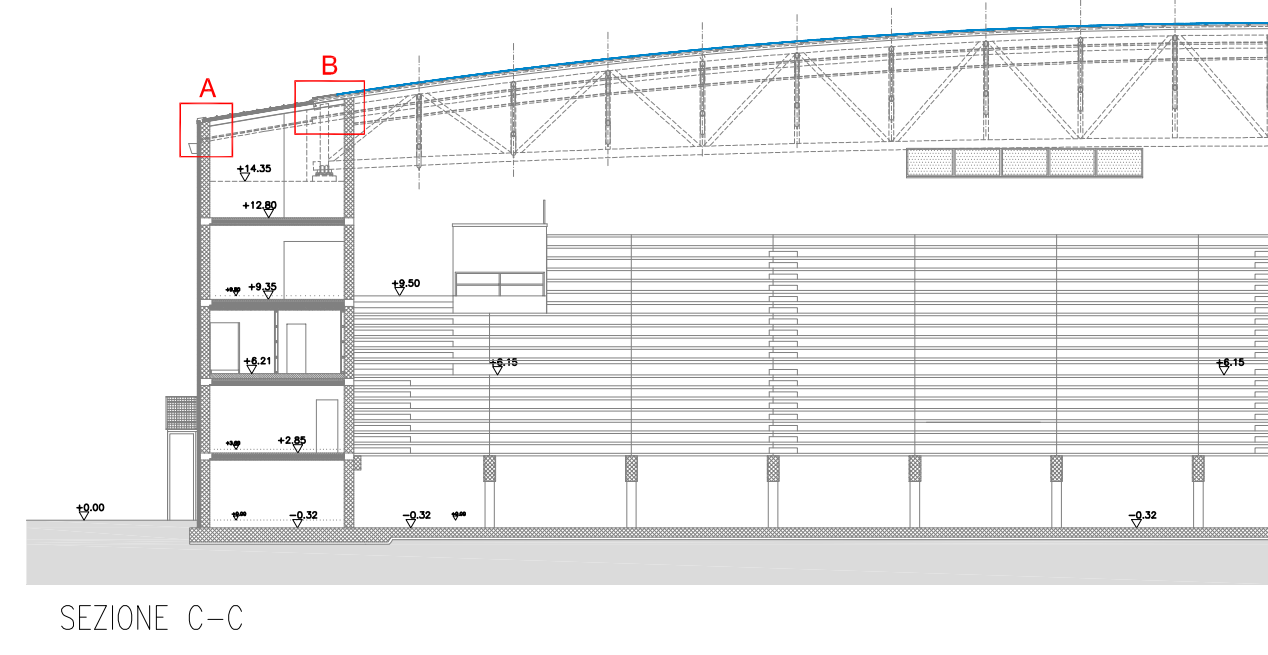
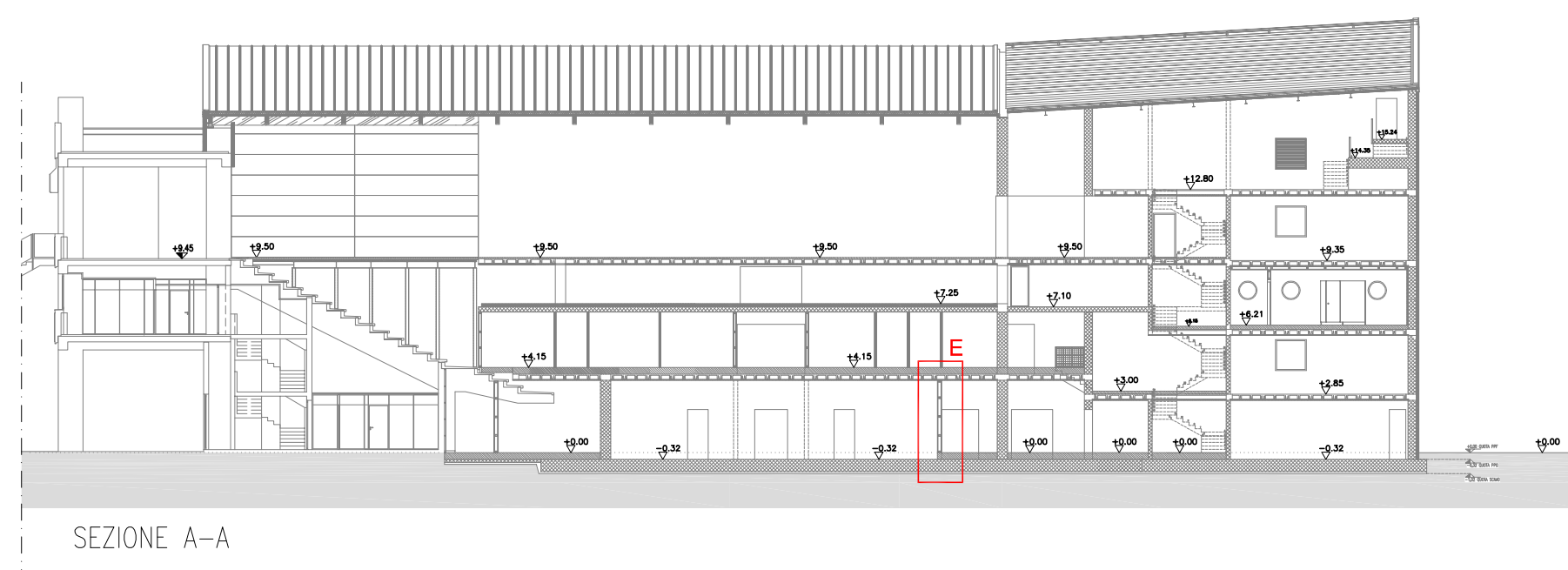
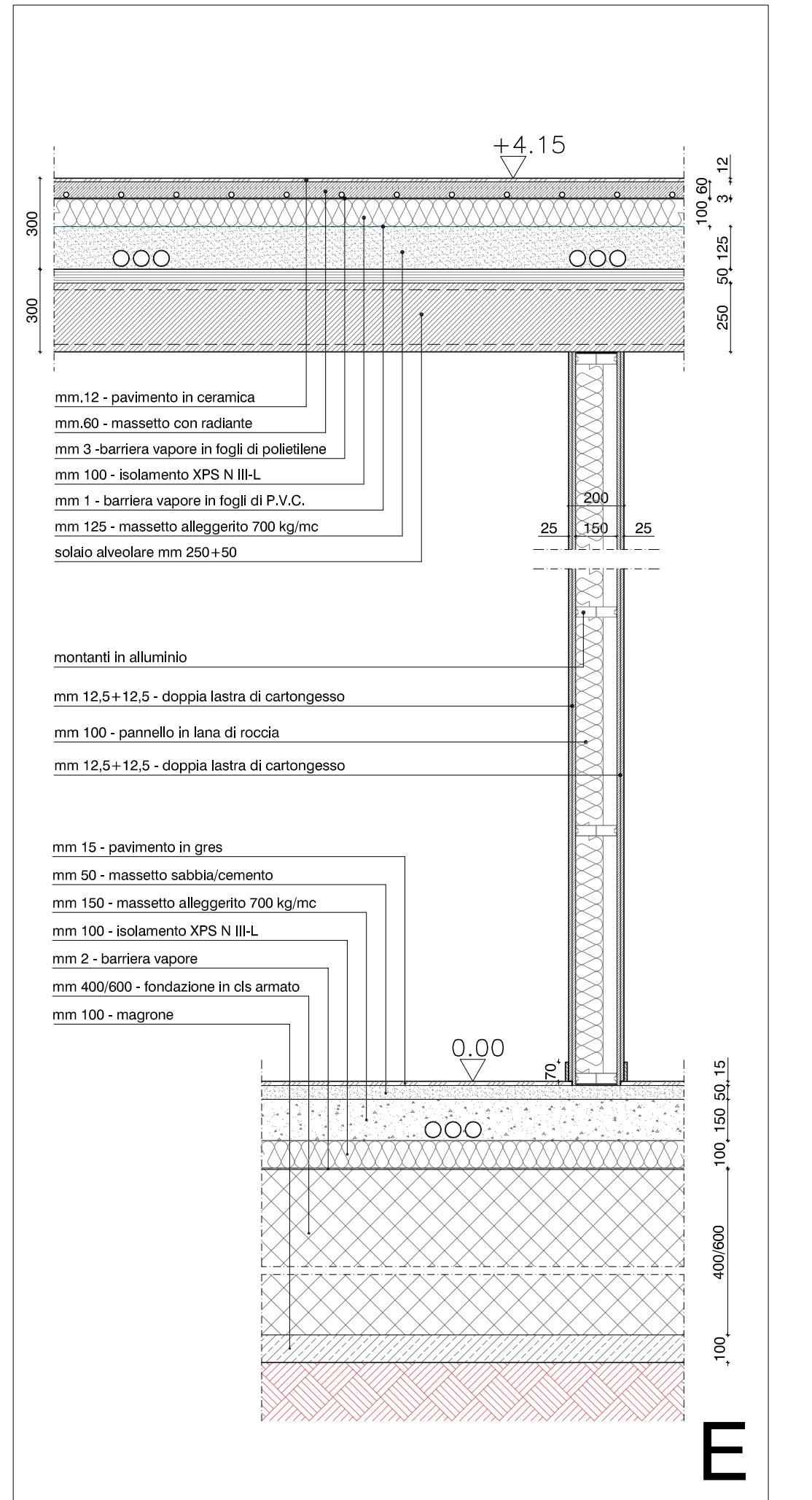
RACCORDO COPERTURA ALLUMINIO/POLICARBONATO FRONTE NORD scala 1:20



RACCORDO PAVIMENTO PALESTRA / SPOGLIATOI scala 1:20



scala 1:20



RACCORDO PAVIMENTO PALESTRA SU TRIBUNE ESISTENTI scala 1:20

