



PROGETTO ESECUTIVO

Table with project metadata: COGNOME OPERA, LPP EDP 2019/163 - 2019/164 - 2019/165, DATA, Meseggio 2020, NUMERO, TAV. 37, etc.

Table titled 'CEMENTO ARMATO (O.M. 17.01.2018)' listing various materials and their specifications for the concrete structure.

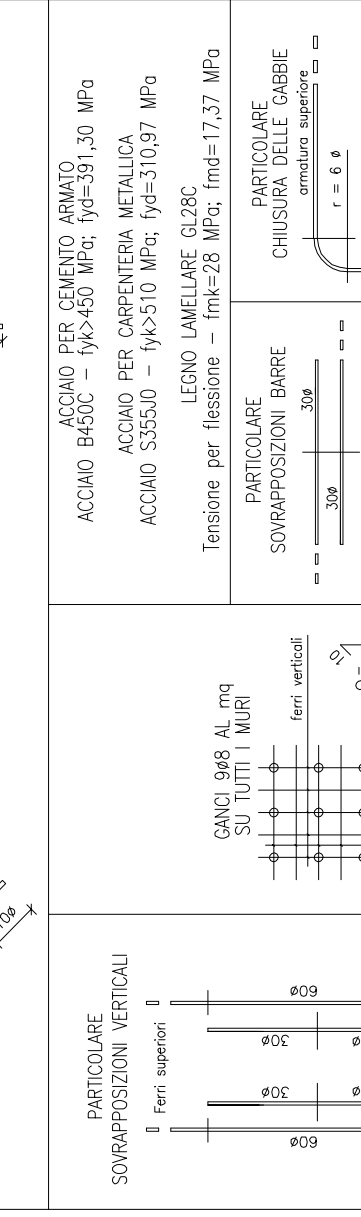


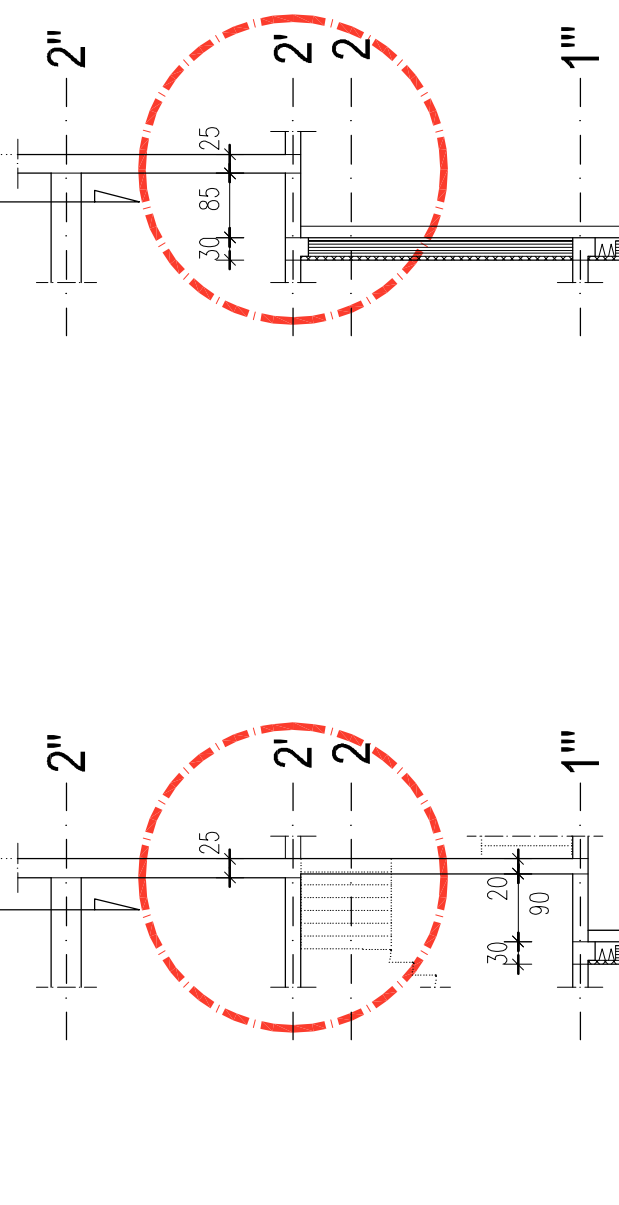
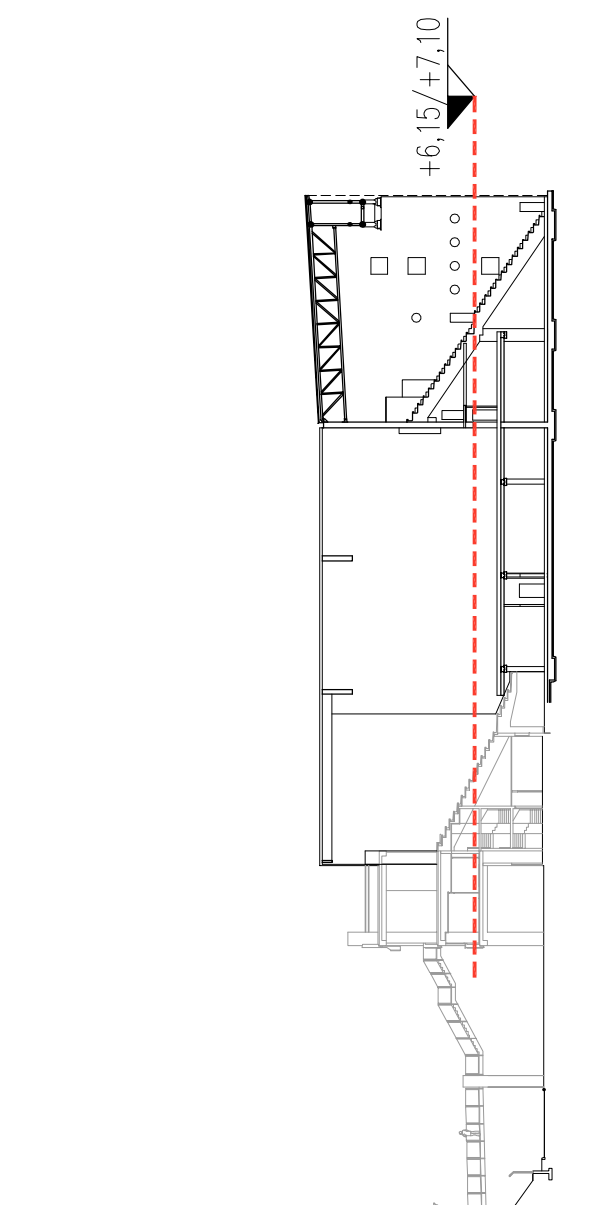
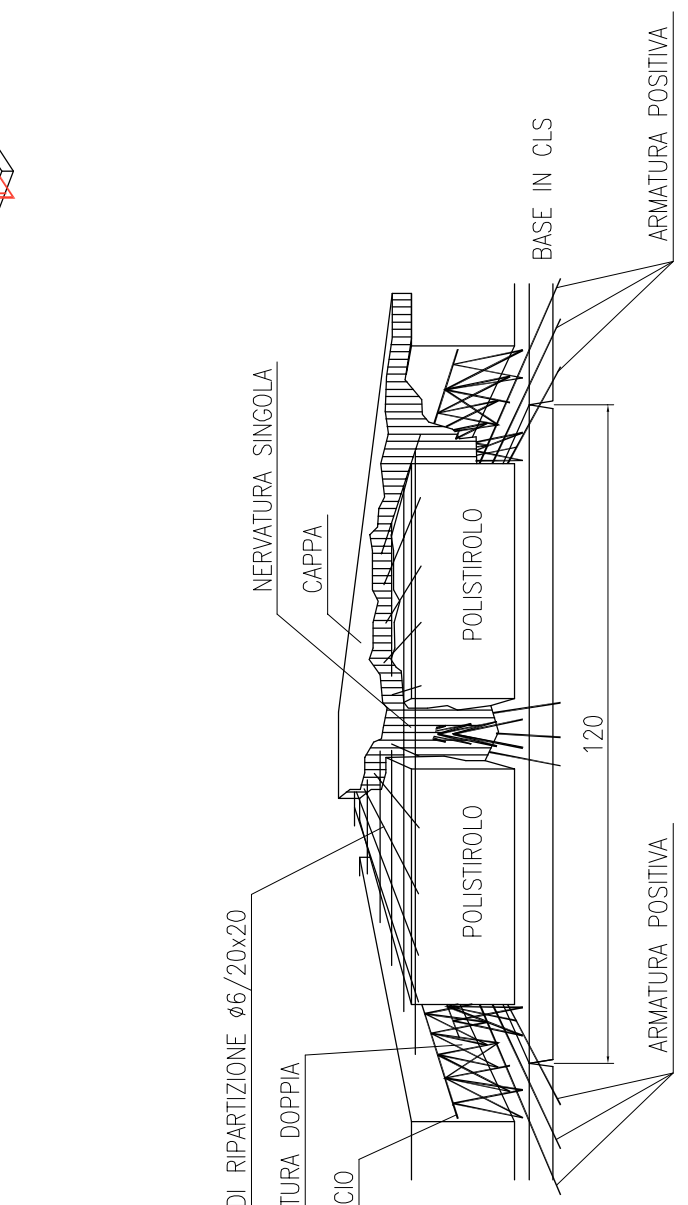
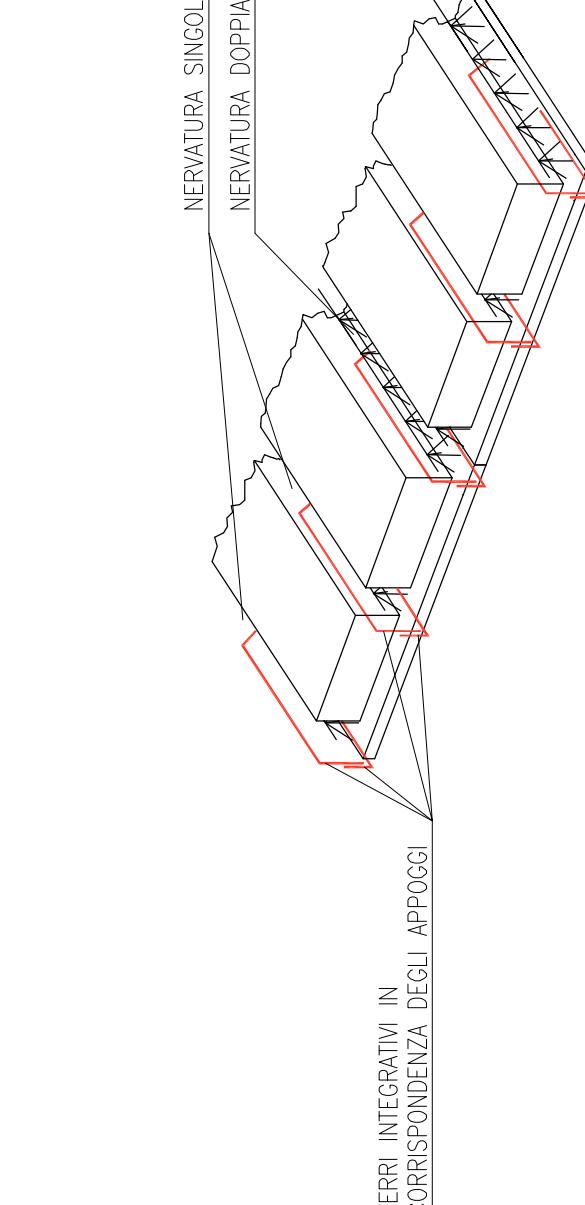
Table for 'SOLAIA PREALTA H=420x5+30 cm' detailing reinforcement requirements, including section details (SEZ. A-A, SEZ. L-L) and specific bar schedules.

REQUISITI PER I FERMI DI ARMATURA: PRESCRIZIONI PER I FERMI DI ARMATURA, PRESCRIZIONI PER LE FASCE DIGETTO DEL C.L.S., etc.

PRESCRIZIONI PER LA REALIZZAZIONE DEGLI IMPIANTI: PRESCRIZIONI PER LA REALIZZAZIONE DEI POZZETTI PERI SOTTOSERVEZIE E SISTEMAZIONE DEGLI ESISTENTI.

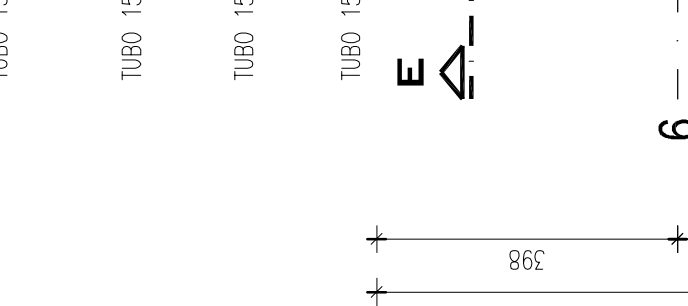
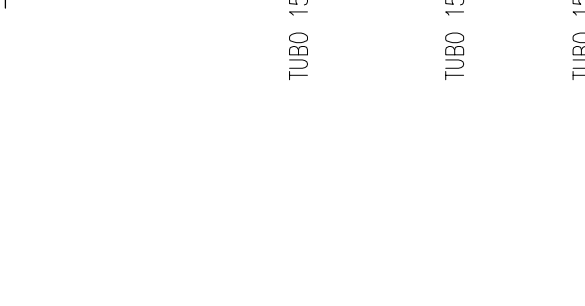
PREPARAZIONE DEL PAVIMENTO: PREPARAZIONE MATERIA DI FONDAZIONE, STRUTTURE IN C.A. PREFABBRICATO, STRUTTURE IN C.A. ESISTENTE, MANODORA FORNITE.

- SEZIONE GENERICA SCLAD PREFRALS H 450x450
- Area di intervento di B.C.
- Manutenzione, rimozione, adattamento, smontaggio e montaggio secondo le prescrizioni dello stato.

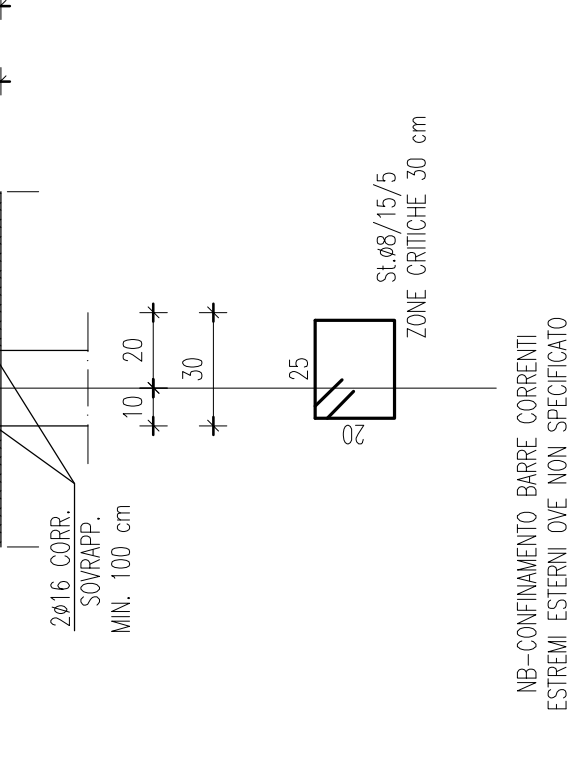
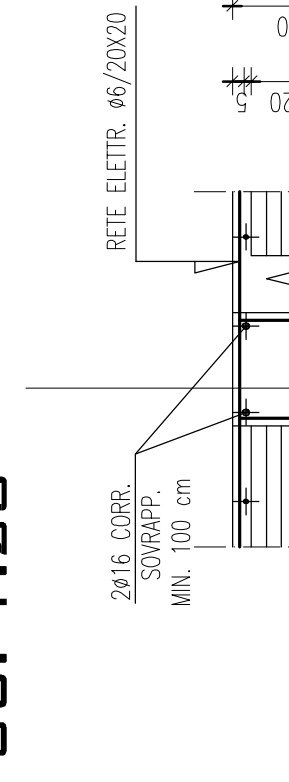


SEZ. C-C

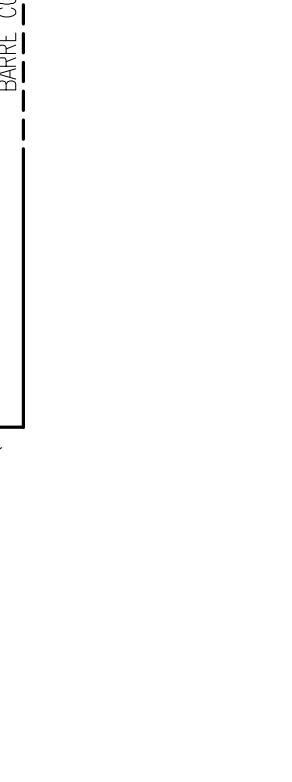
SEZ. H-I



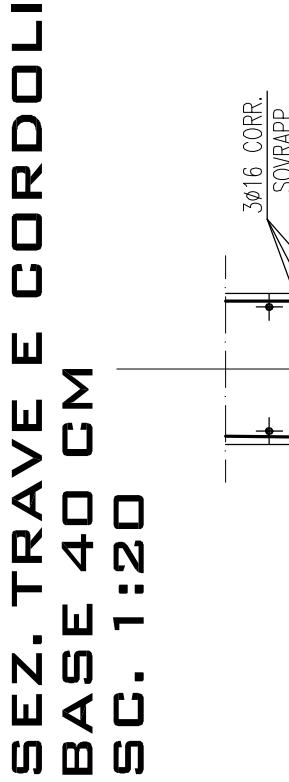
SEZ. TRAVE E CORDOLI
BASE 30 CM
SC. 1:20



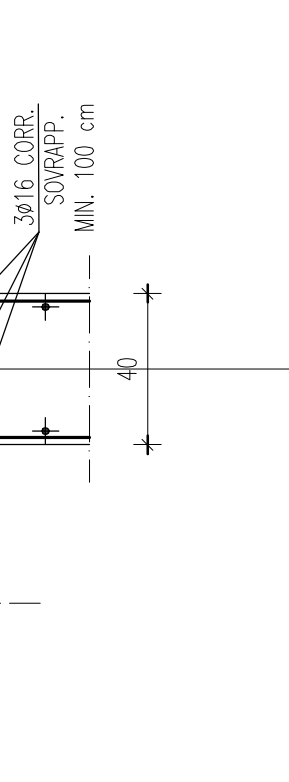
SEZ. TRAVE E CORDOLI
BASE 40 CM
SC. 1:20



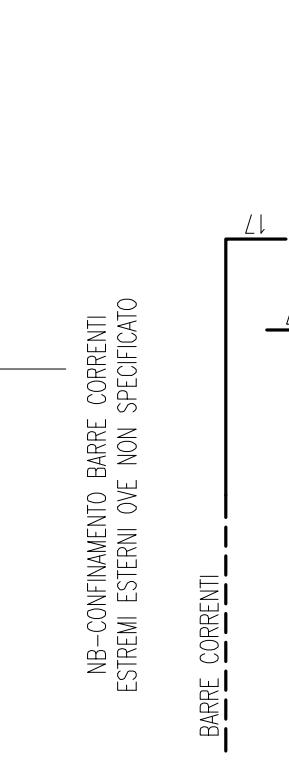
SEZ. TRAVE E CORDOLI
BASE 50 CM
SC. 1:20



SEZ. TRAVE E CORDOLI
BASE 50 CM
SC. 1:20



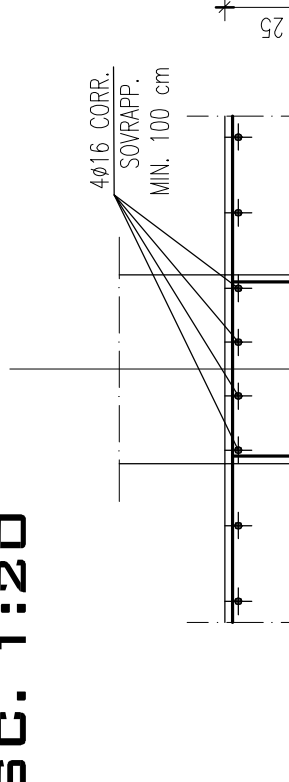
PARTICOLARE SEZ. B-B
PASSERELLA PICCHETTO 3
SC. 1:20



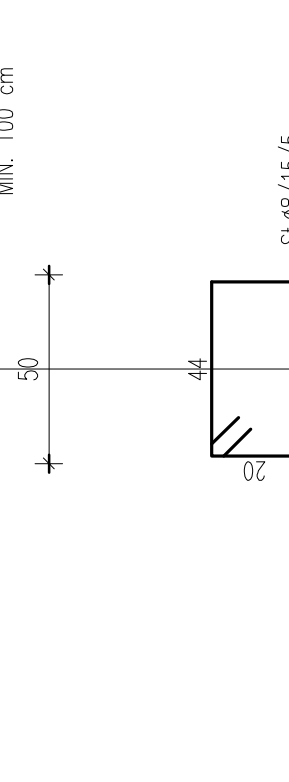
SEZ. C-CORREA
SC. 1:20



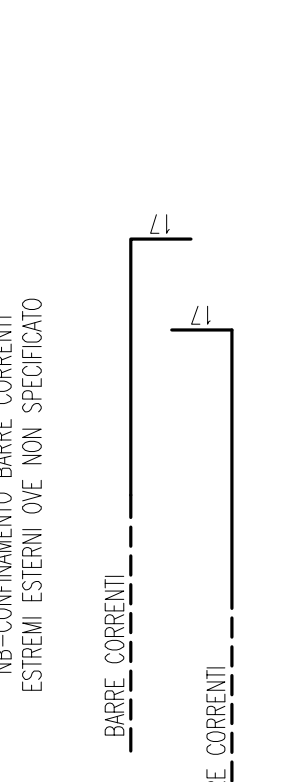
PARTICOLARE SEZ. H
SC. 1:20



PARTICOLARE SEZ. H'
SC. 1:20



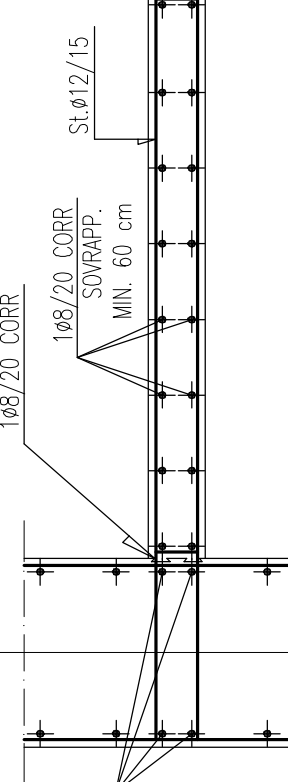
PARTICOLARE SEZ. I
SC. 1:20



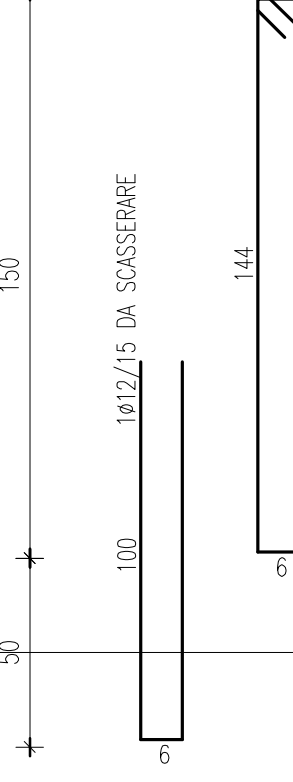
PARTICOLARE SEZ. H
SC. 1:20



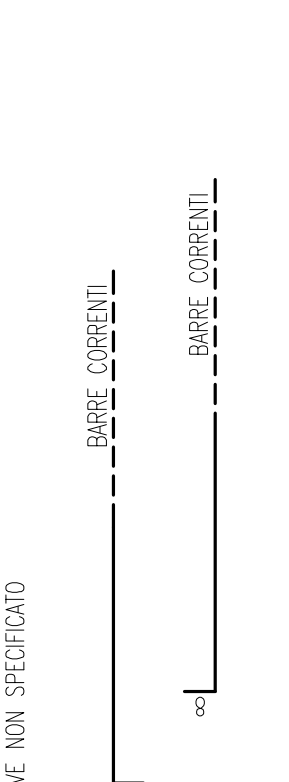
PARTICOLARE SEZ. H
SC. 1:20



PARTICOLARE SEZ. H
SC. 1:20



PARTICOLARE SEZ. H
SC. 1:20



PARTICOLARE SEZ. H
SC. 1:20

