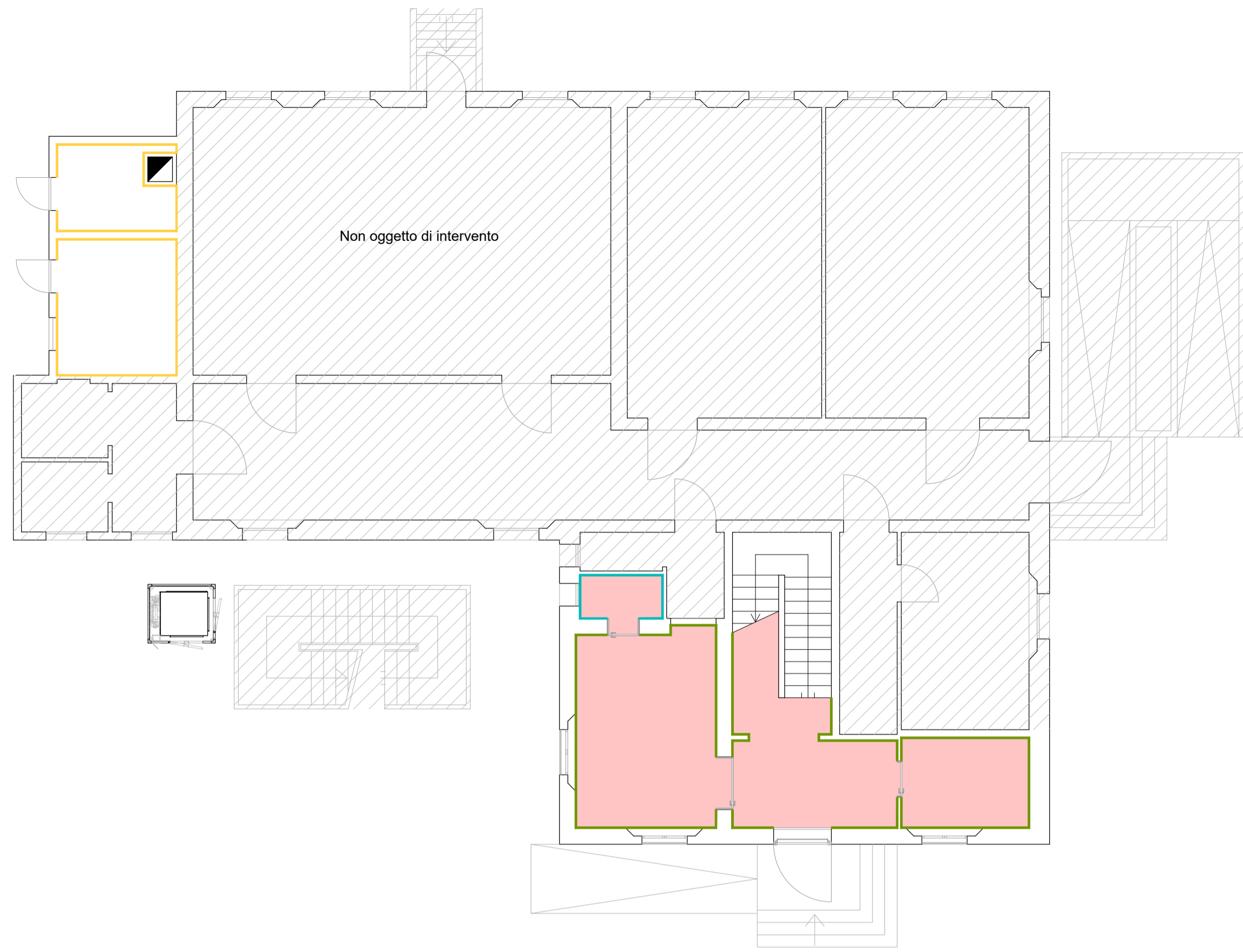
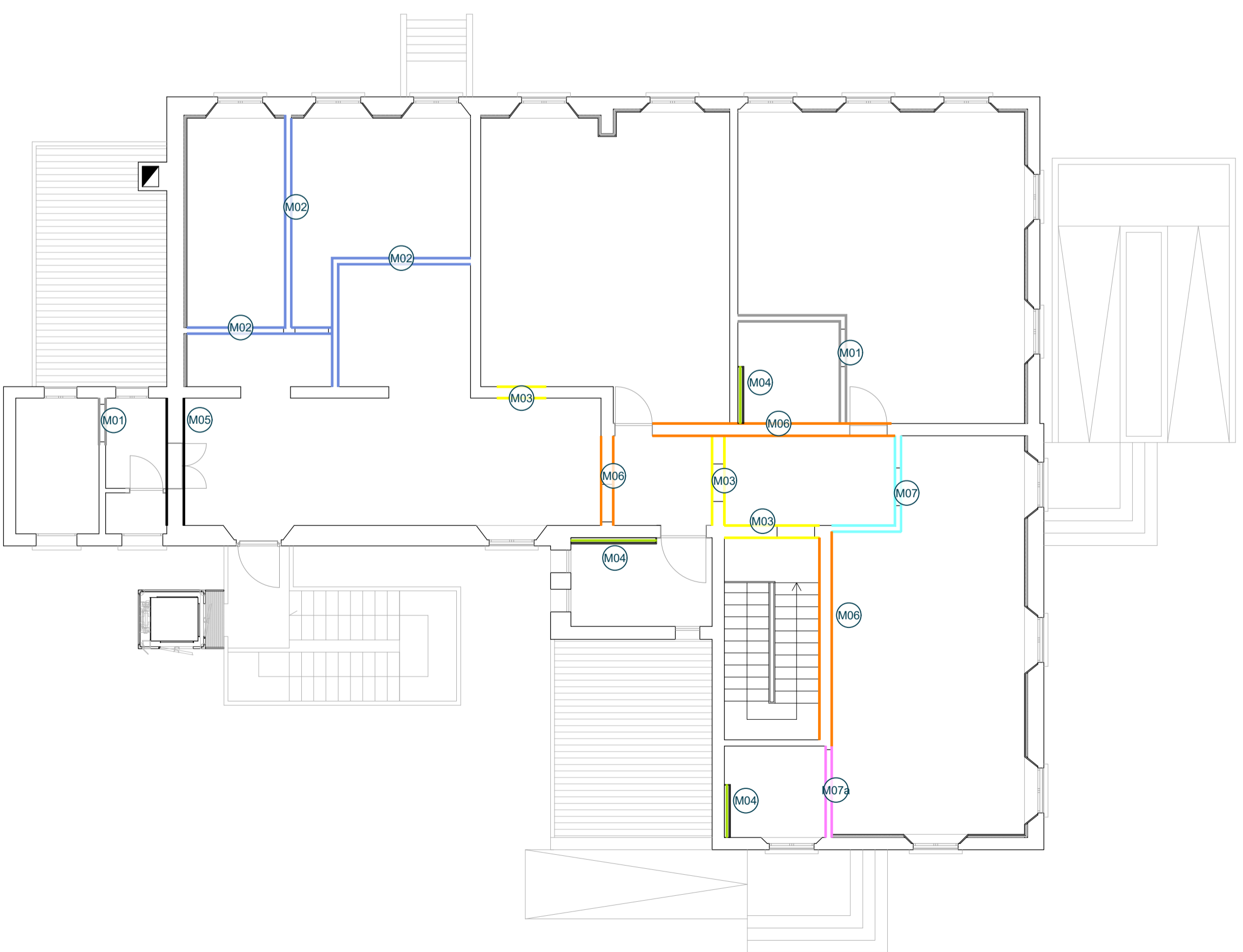


PIANTA PIANO TERRA
scala 1:100

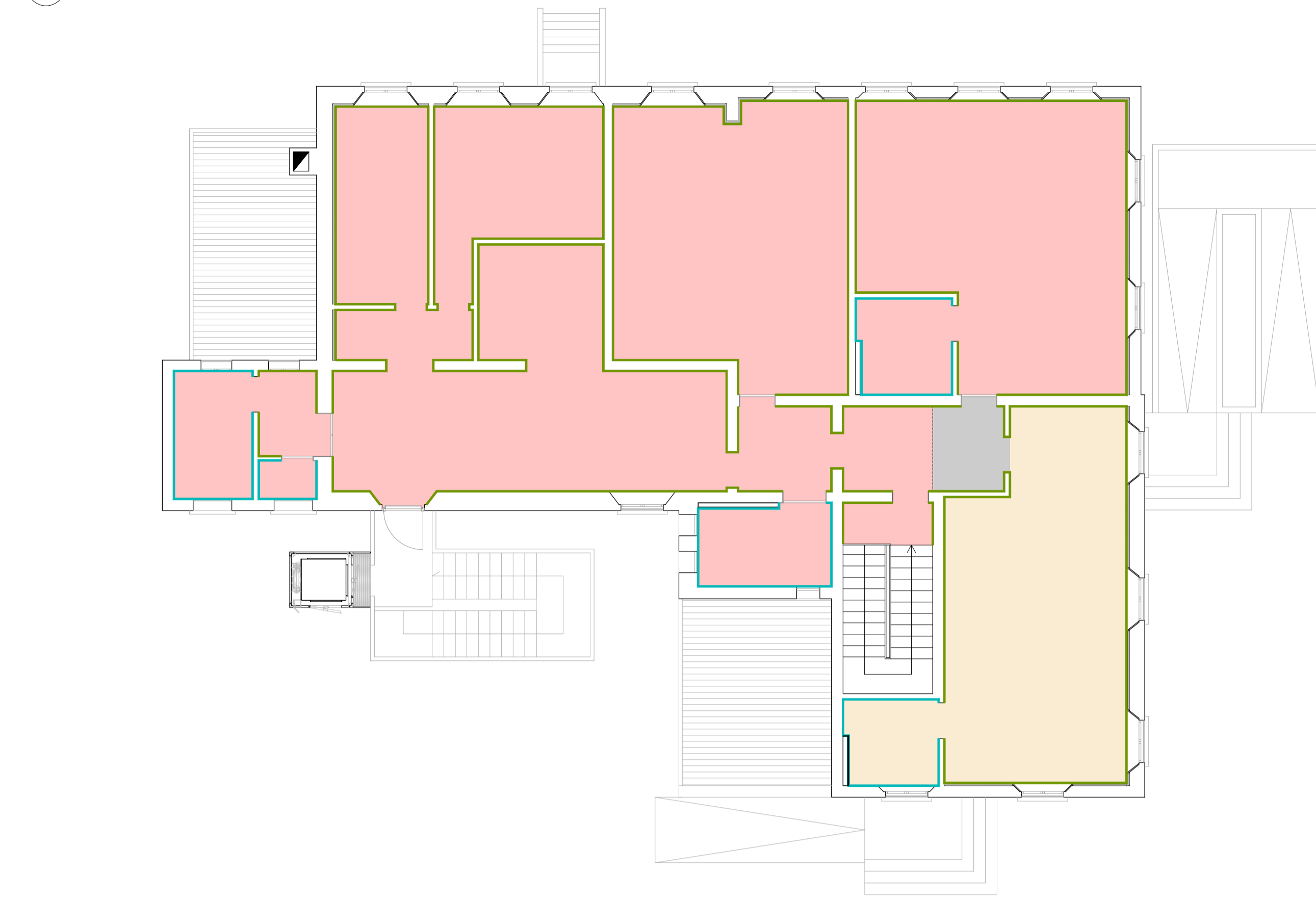


Il piano terra rimane distributivamente inalterato.

PIANTA PIANO PRIMO
scala 1:100



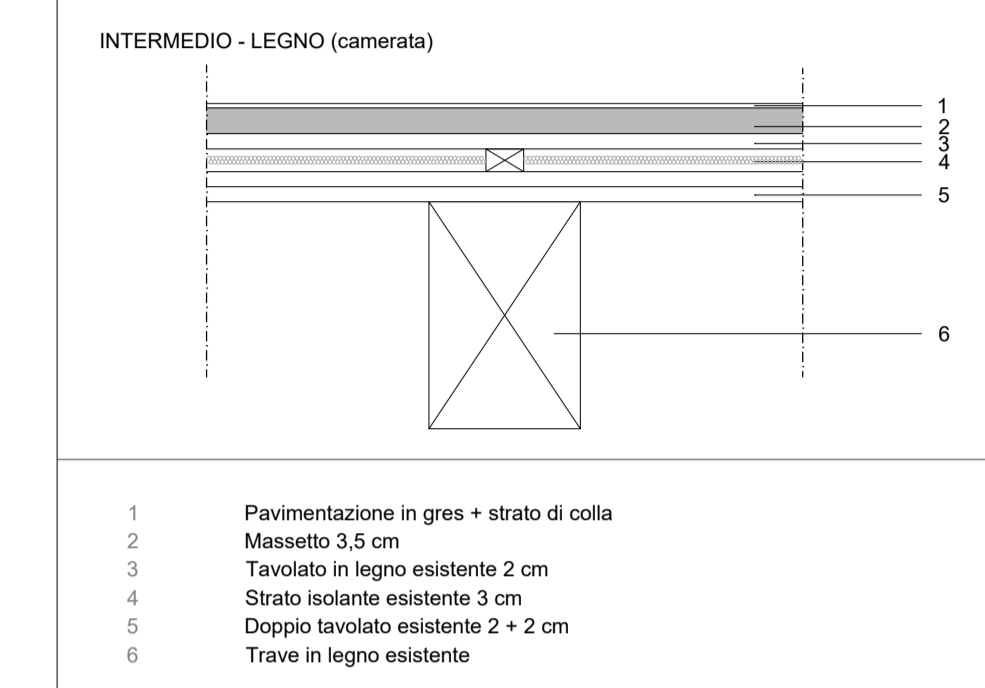
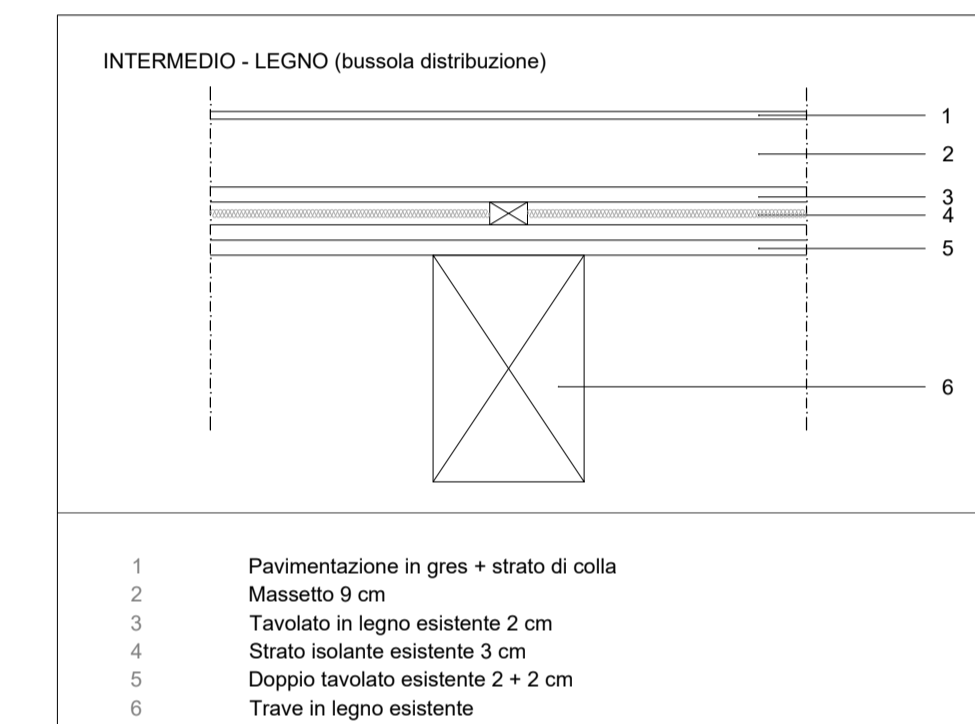
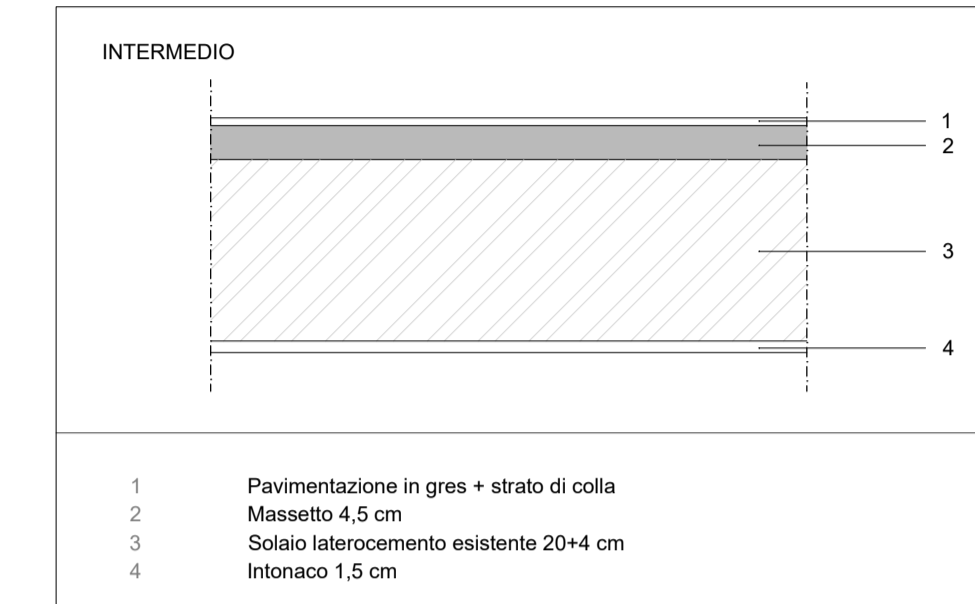
PIANTA PIANO PRIMO
scala 1:100



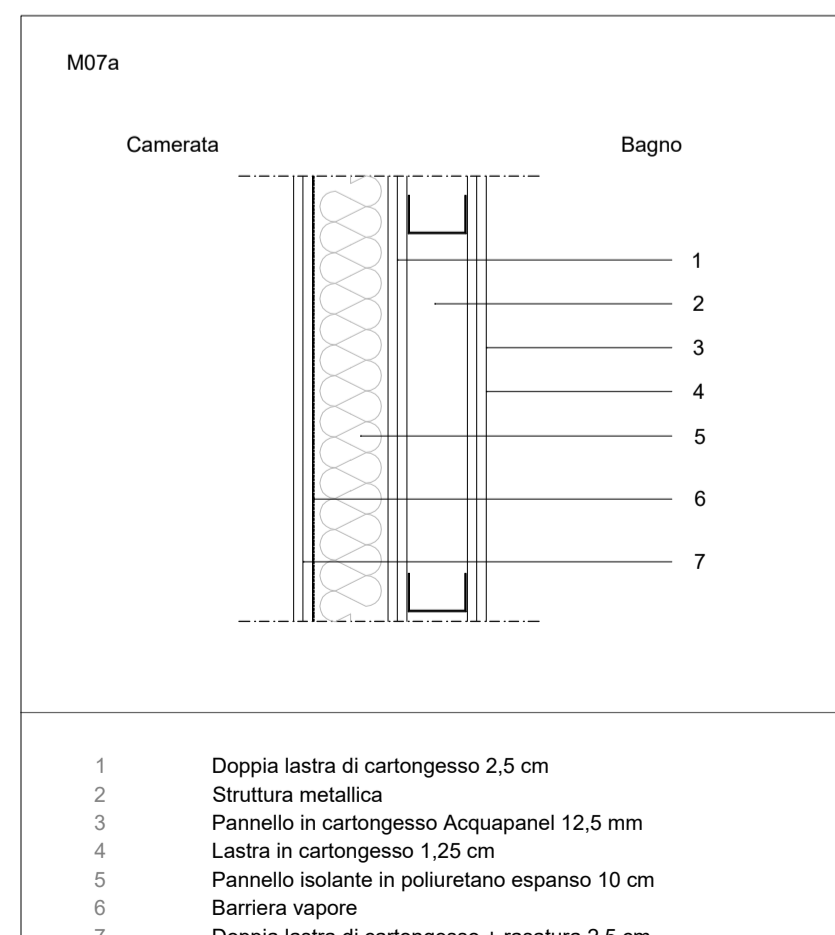
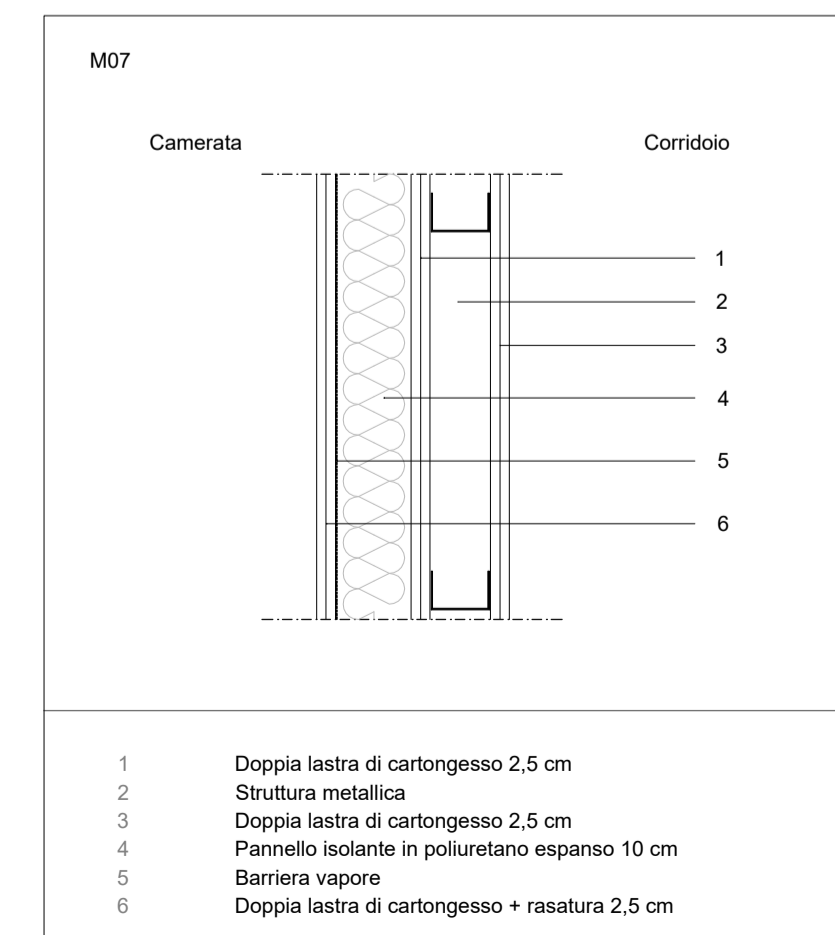
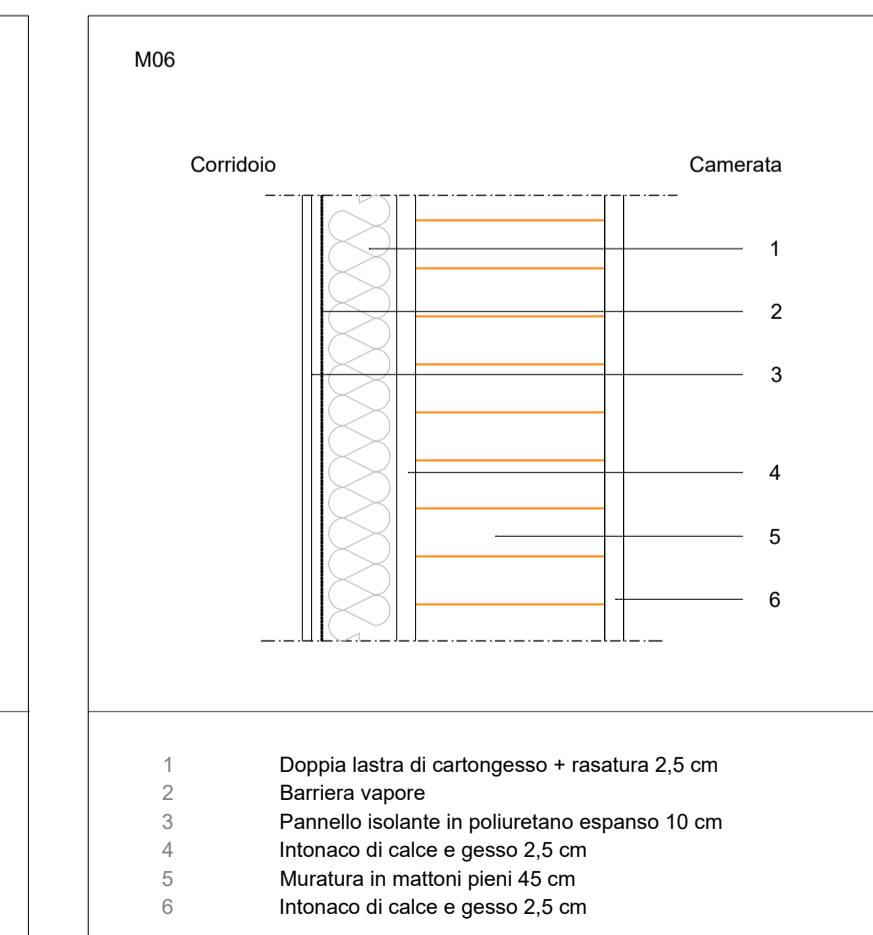
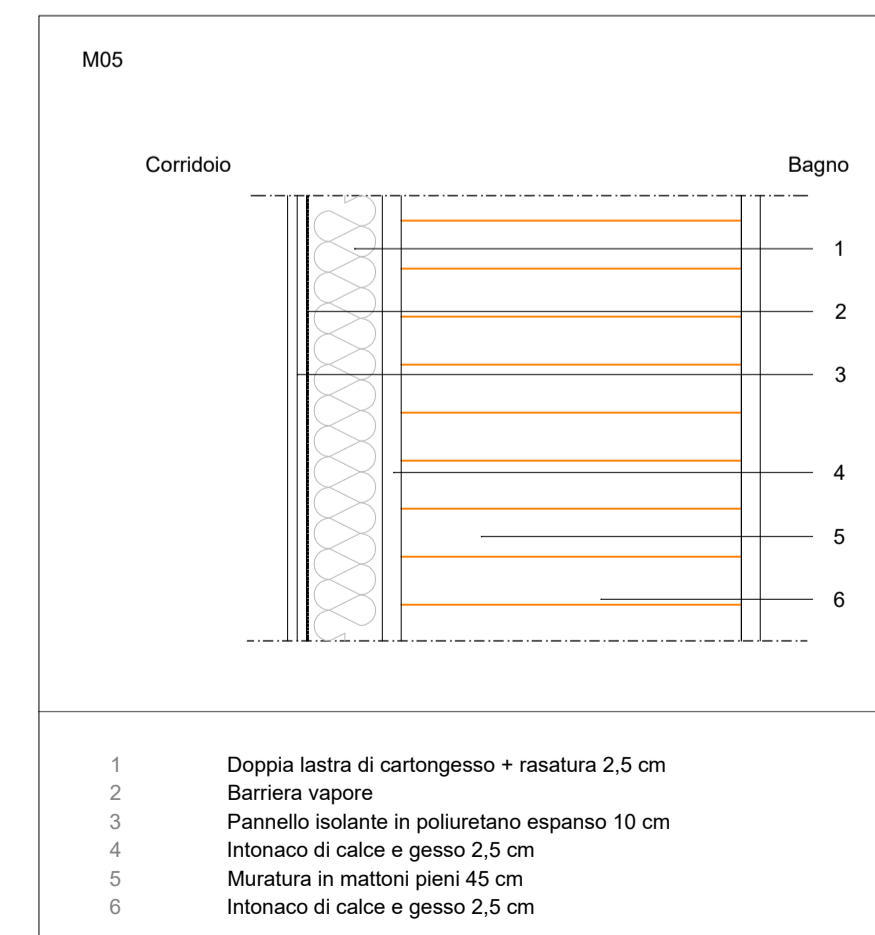
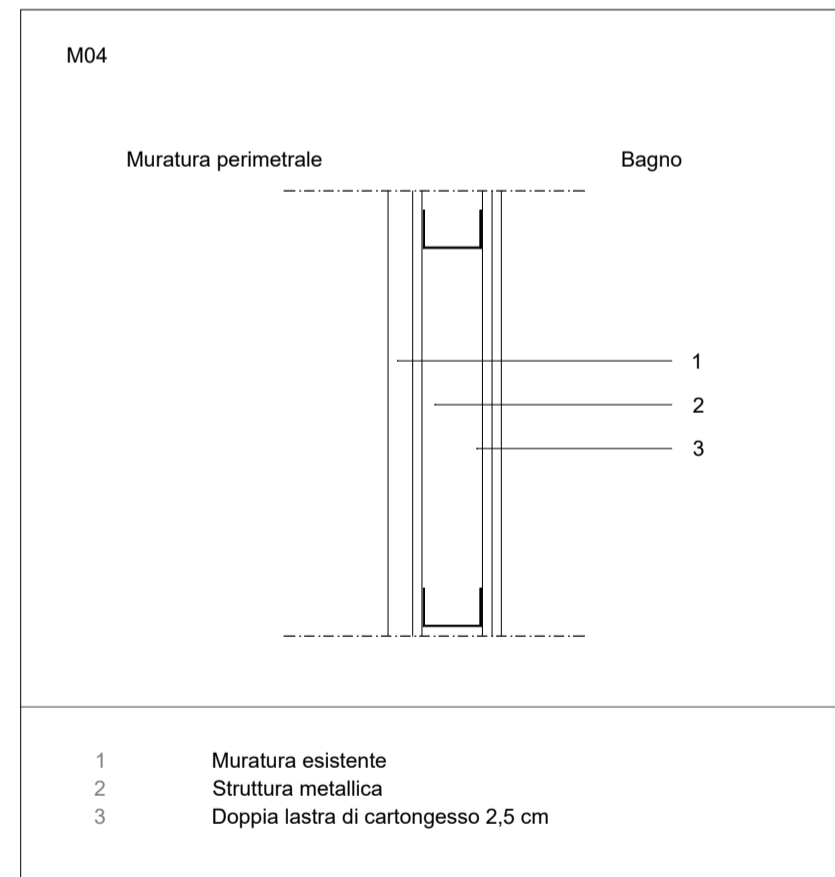
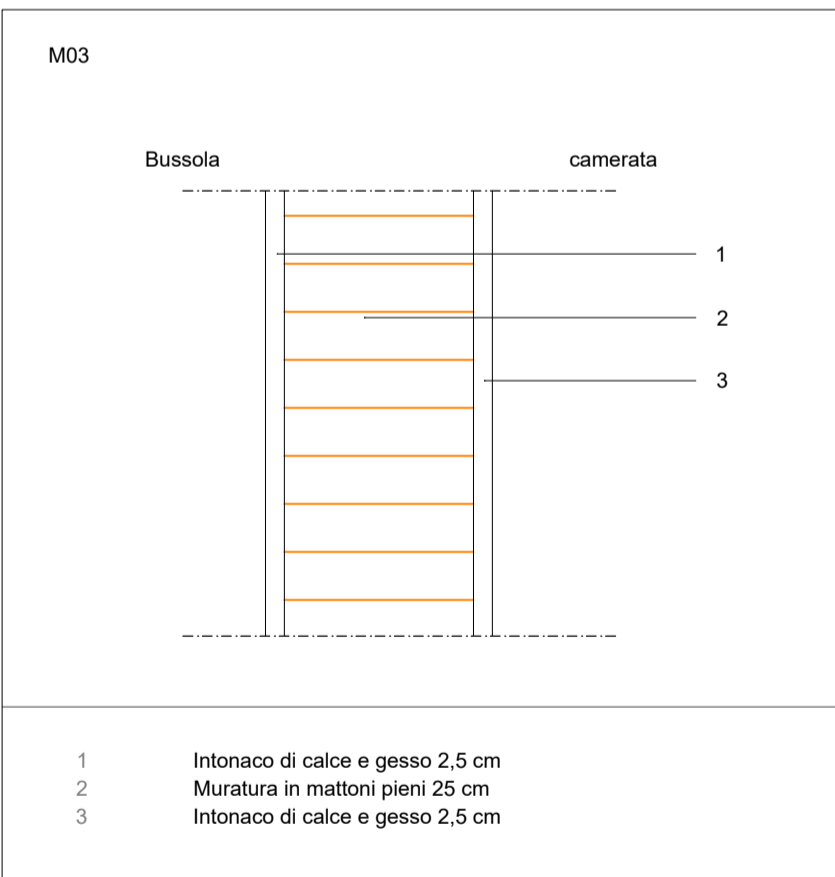
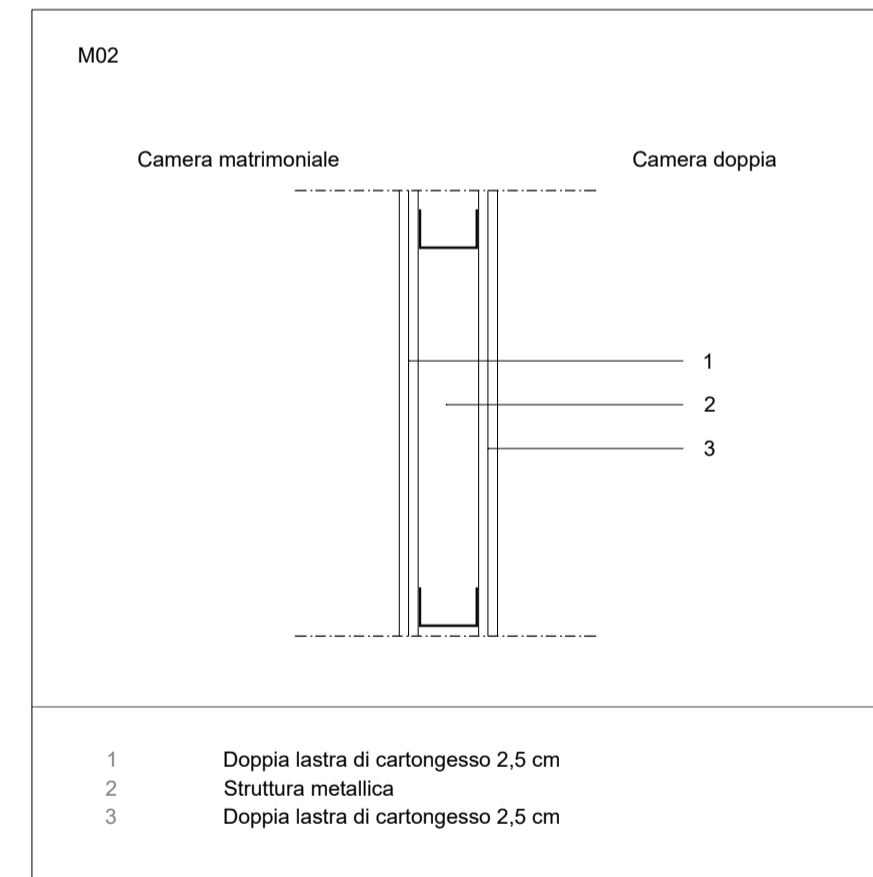
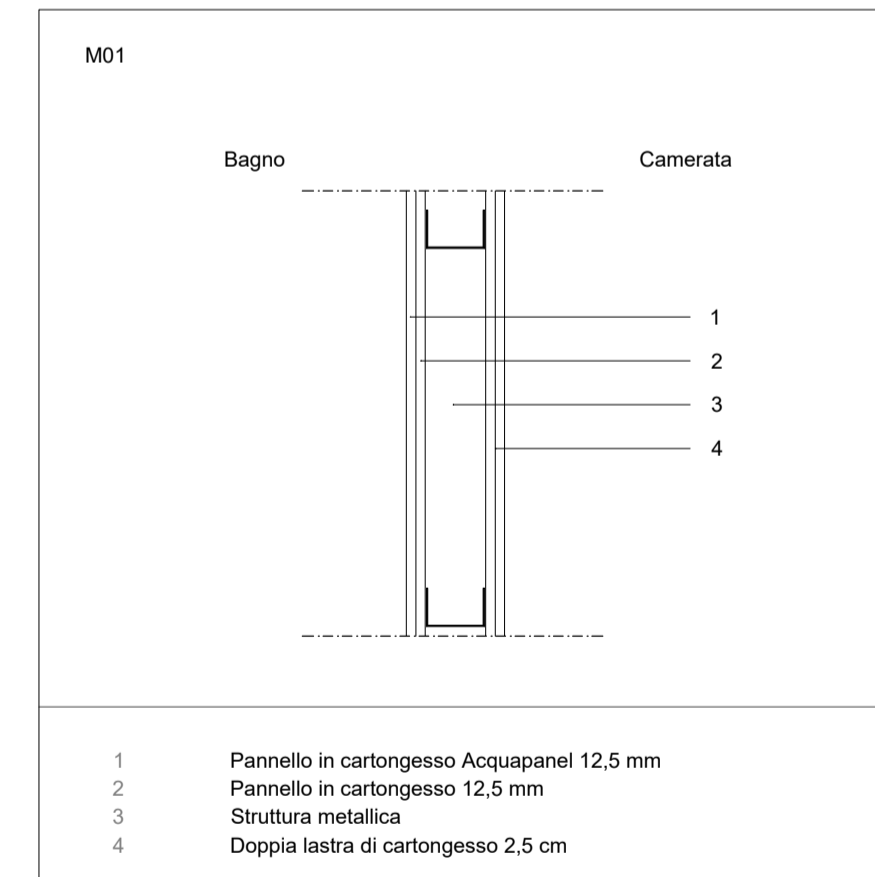
LEGENDA

- Pavimenti**
- Pavimentazione in gres
 - Solaio in legno con nuovo massetto (camerata) da 3,5 cm + pavimentazione
 - Solaio in legno con nuovo massetto (bussola distribuzione) da 9 cm + pavimentazione
 - Battiscopa 10 cm + finitura in smalto murale fino ad altezza 1,5 m; oltre finitura in pittura lavabile
 - Rivestimento in gres fino a 1,50 m; oltre finitura in smalto
 - Finitura in pittura lavabile

SCHEDE PACCHETTI SOLAI
scala 1:10



SCHEDE PACCHETTI PARTIZIONI INTERNE
scala 1:10



PIANO NAZIONALE DI RIPRESA E RESILIENZA
MISSIONE 5 - COMPONENTE 2 - AMBITO INTERVENTO/MISURA 2
INVESTIMENTO 1.3 HOUSING TEMPORANEO E STAZIONI DI POSTA - [M5C211.3.2]

LLPP EDP 2022/078
PROGETTO ESECUTIVO

RISTRUTTURAZIONE CON EFFICIENTAMENTO ENERGETICO EX GABELLI E CASSETTA EREMITANO

N° Progetto P23024	CUP H64H22000160006	Elaborato 31-APPR-PE-C-ARC-AB-01-01 ARCHITETTURA
Data Febbraio 2024	LLPP 2022/078	Abaco partizione interne e solai Ex Gabelli

Progettisti 	Rup Arch. Diego Giacon	Capo Settore Dott. Danilo Guarti
------------------------	----------------------------------	--

Meg studio Srl
via Roma, 65 - 35027 Noventa Padovana (PD)
tel 049 7441430 - www.meg.studio
info@meg.studio - meg.studio@pec.it