

Comune di Padova

Provincia di Padova

PIANO URBANISTICO ATTUATIVO CON RECUPERO VOLUMETRICO RELATIVO ALL'AREA UBICATA TRA VIA ISONZO E VIA SIENA NEL COMUNE DI PADOVA

COMMITTENTI

3MAGI S.R.L.
via C.Goldoni, 12
35131 Padova

PROGETTAZIONE

STUDIO

ARCHIPOLIS

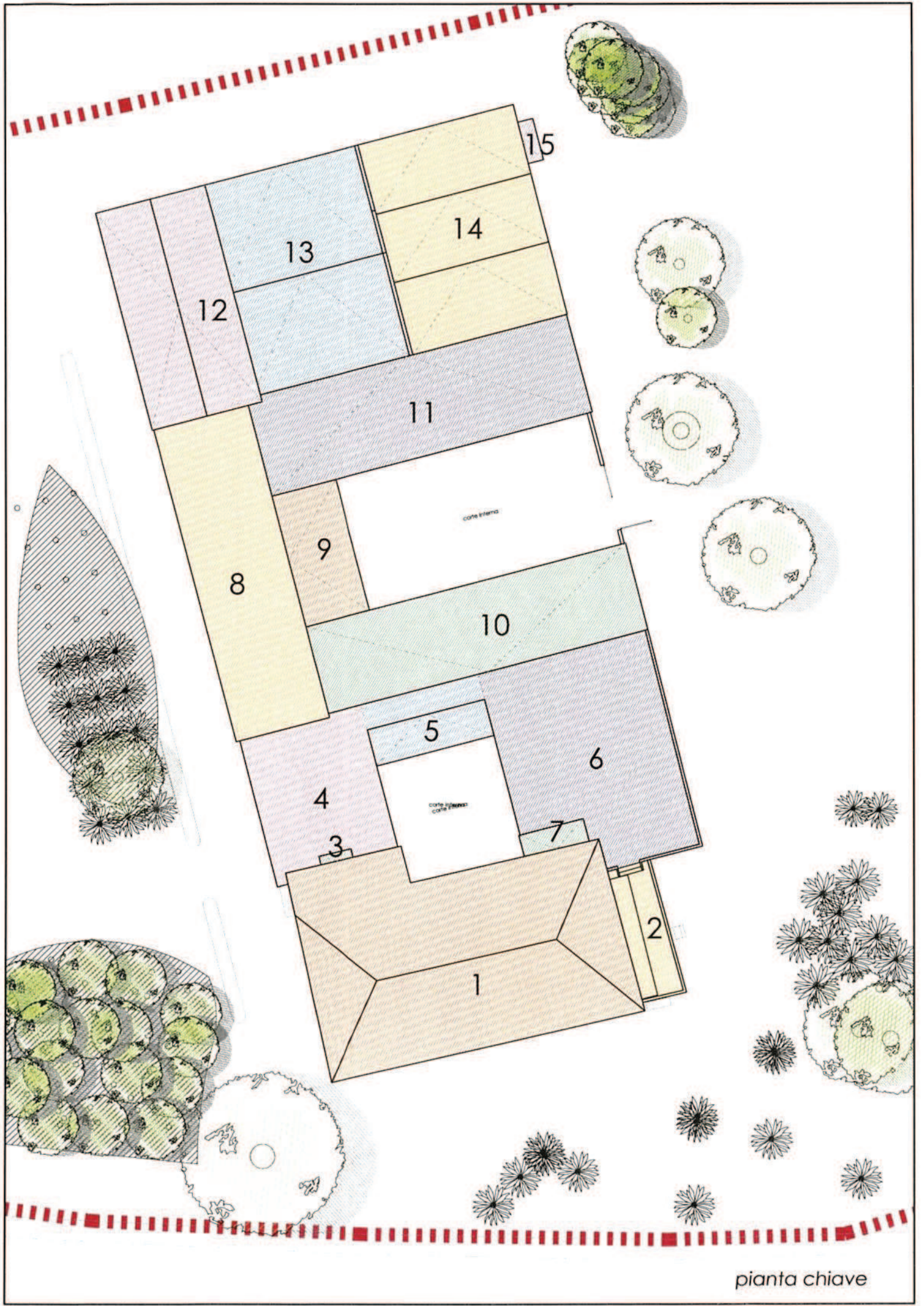
ANTONIO VENTURATO - PIETRO REGAZZO

ARCHITETTI

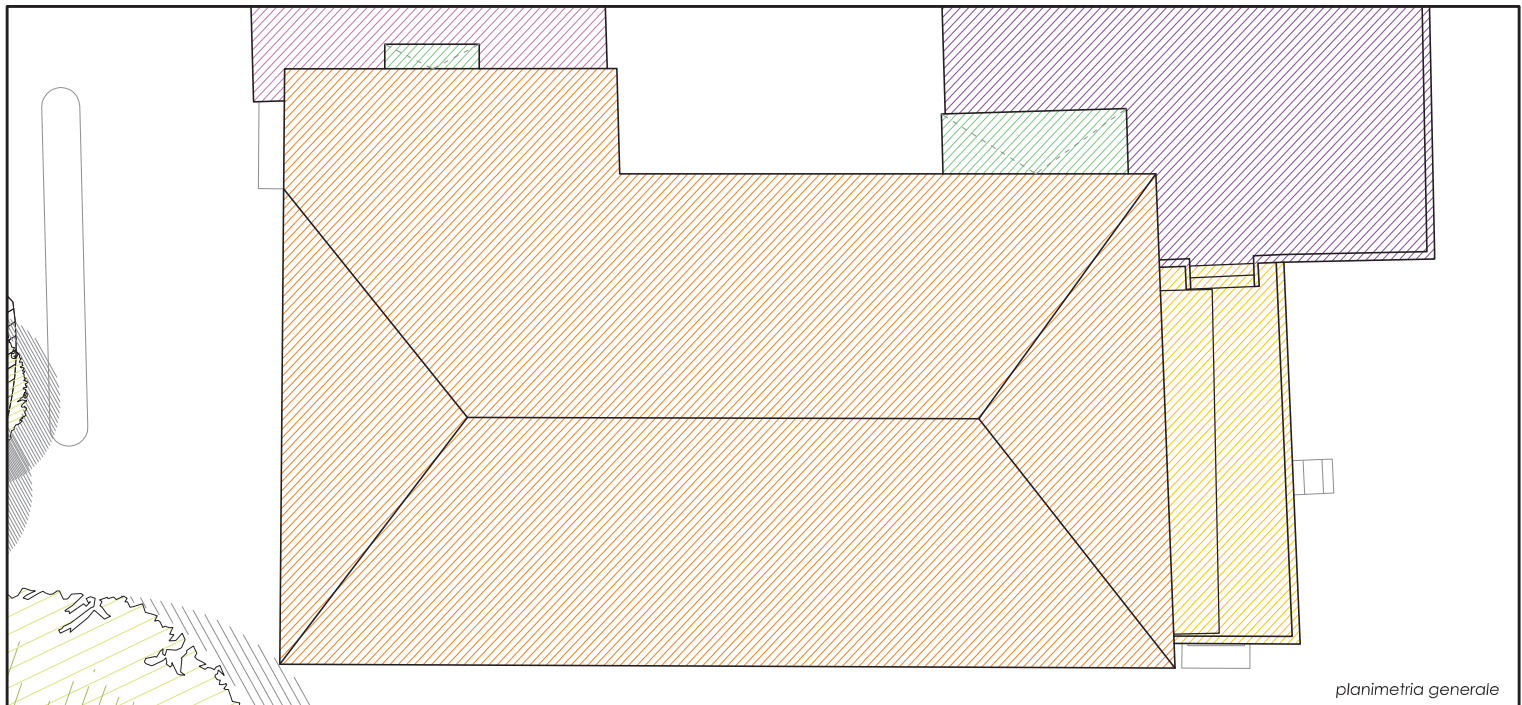
Tel 049 8941025 - Fax 049 8078905
via Savelli, 9/D - 35129 Padova
e_mail progetti@studioarchipolis.it

ELABORATO: CALCOLO VOLUME ESISTENTE

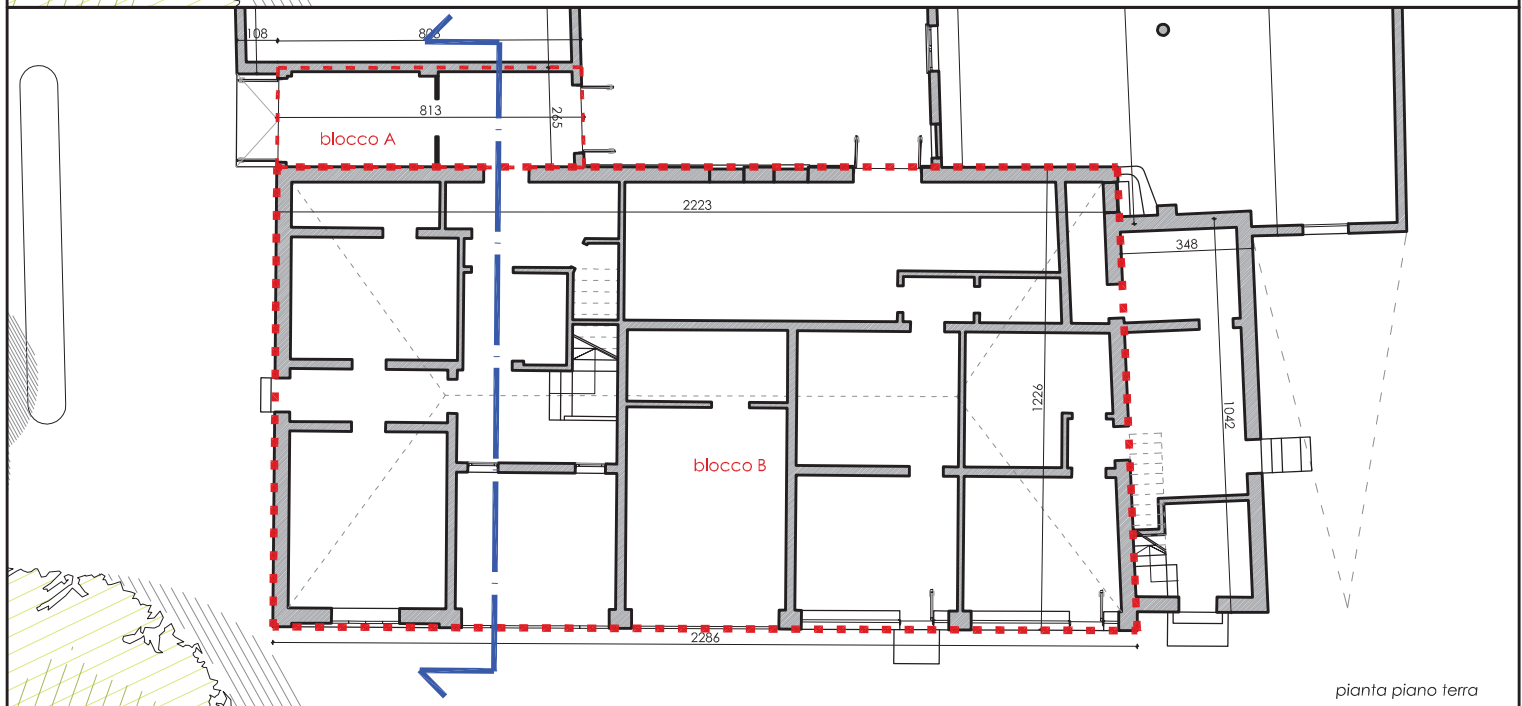
DATA: AGGIORNAMENTO LUGLIO 2014



pianta chiave



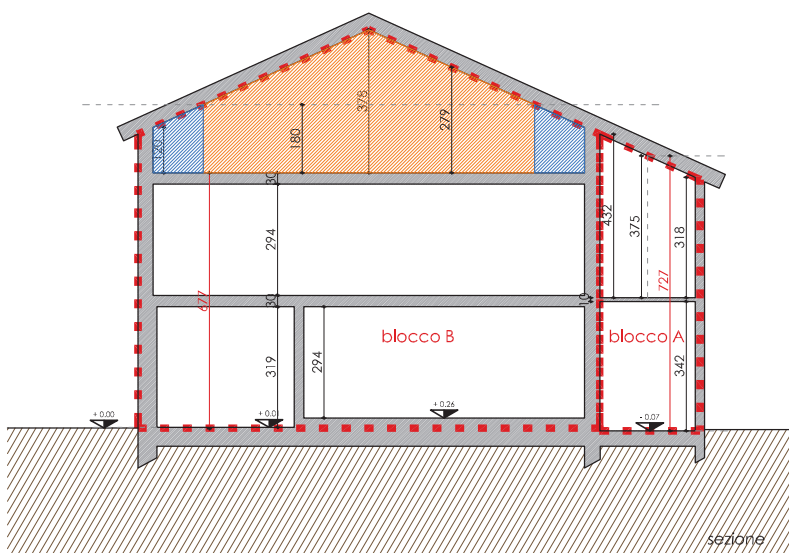
planimetria generale



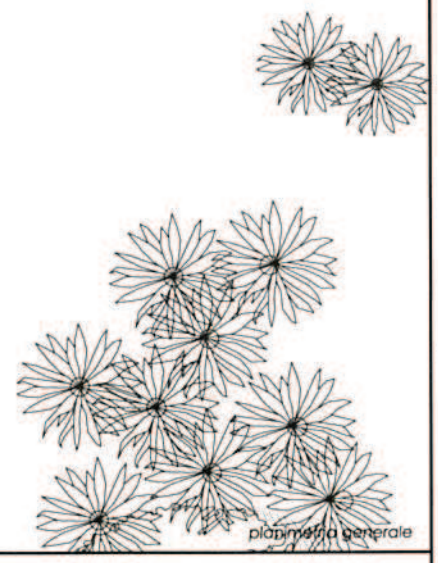
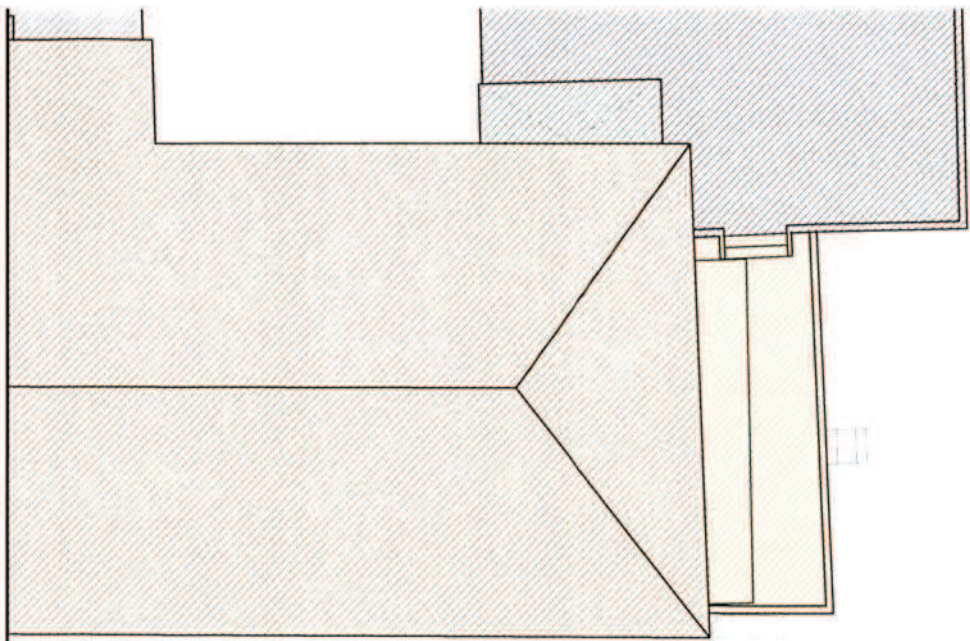
pianta piano terra

VERIFICA VOLUME

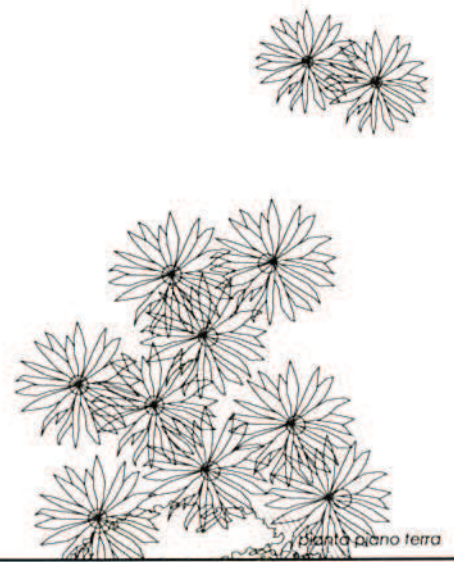
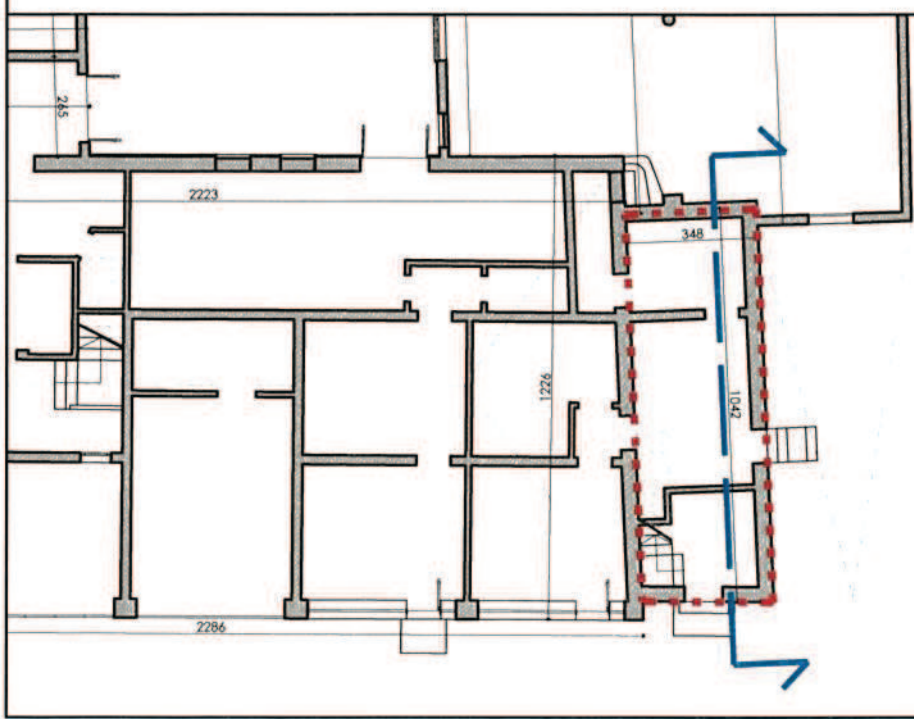
Blocco A	
Superficie	$2,65 \times 8,13 = 21,55 \text{mq}$
Altezza media	7,27m
VOLUME	$21,55 \times 7,27 = 156,67 \text{mc}$
Blocco B	
Superficie piano terra e primo	$(22,23 + 22,86) \times 12,26 / 2 = 276,40 \text{mq}$
Altezza	6,77m
Volume piano terra+primo	$276,40 \times 6,77 = 1.871,23 \text{mc}$
Superficie piano sottotetto	193,54mq
Altezza media	2,79m
Volume piano sottotetto	$193,54 \times 2,79 = 539,98 \text{mc}$
VOLUME TOTALE	$156,67 + 1.871,23 + 539,98 = 2.567,88 \text{mc}$



sezione



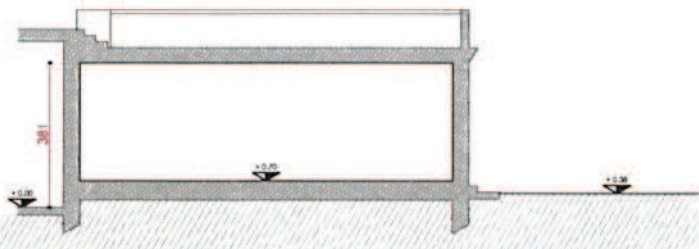
pianta generale



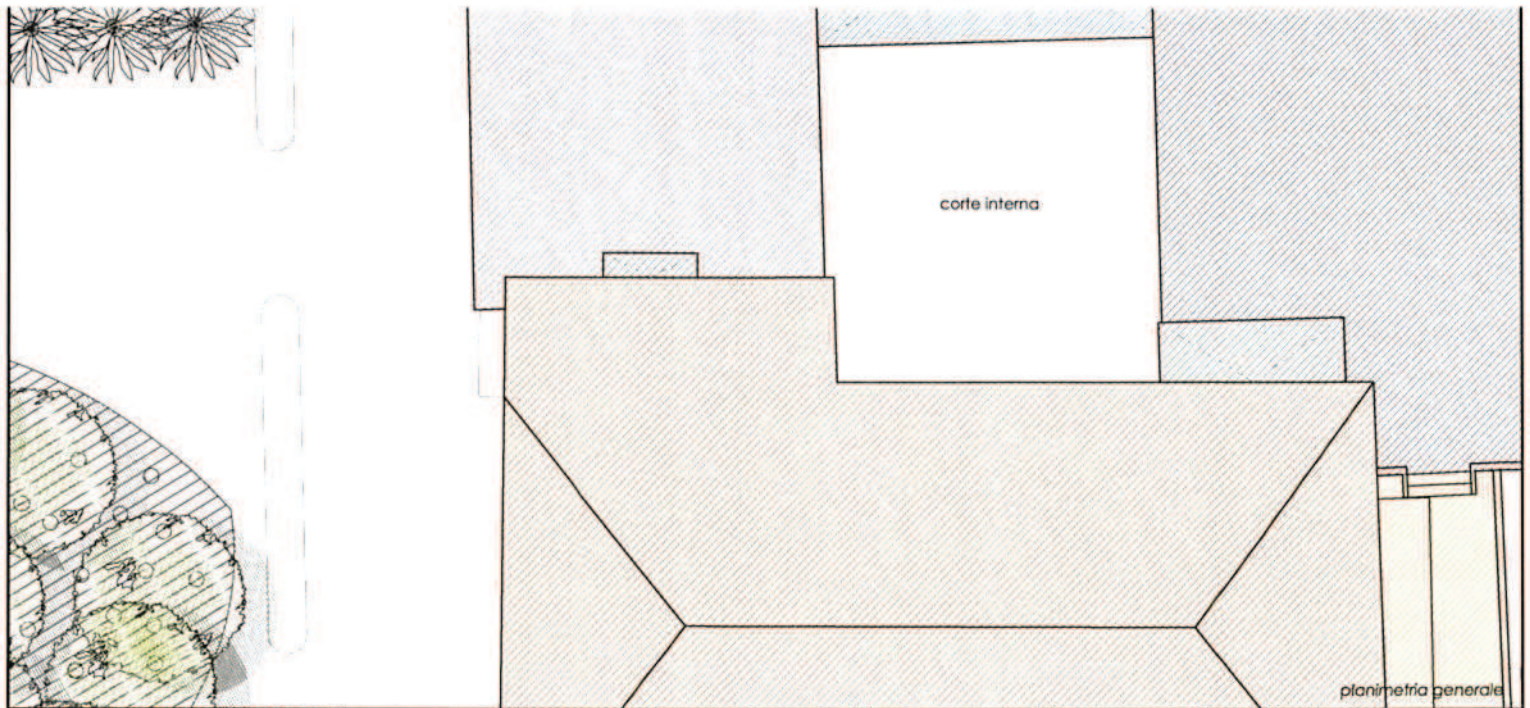
pianta piano terra

VERIFICA VOLUME

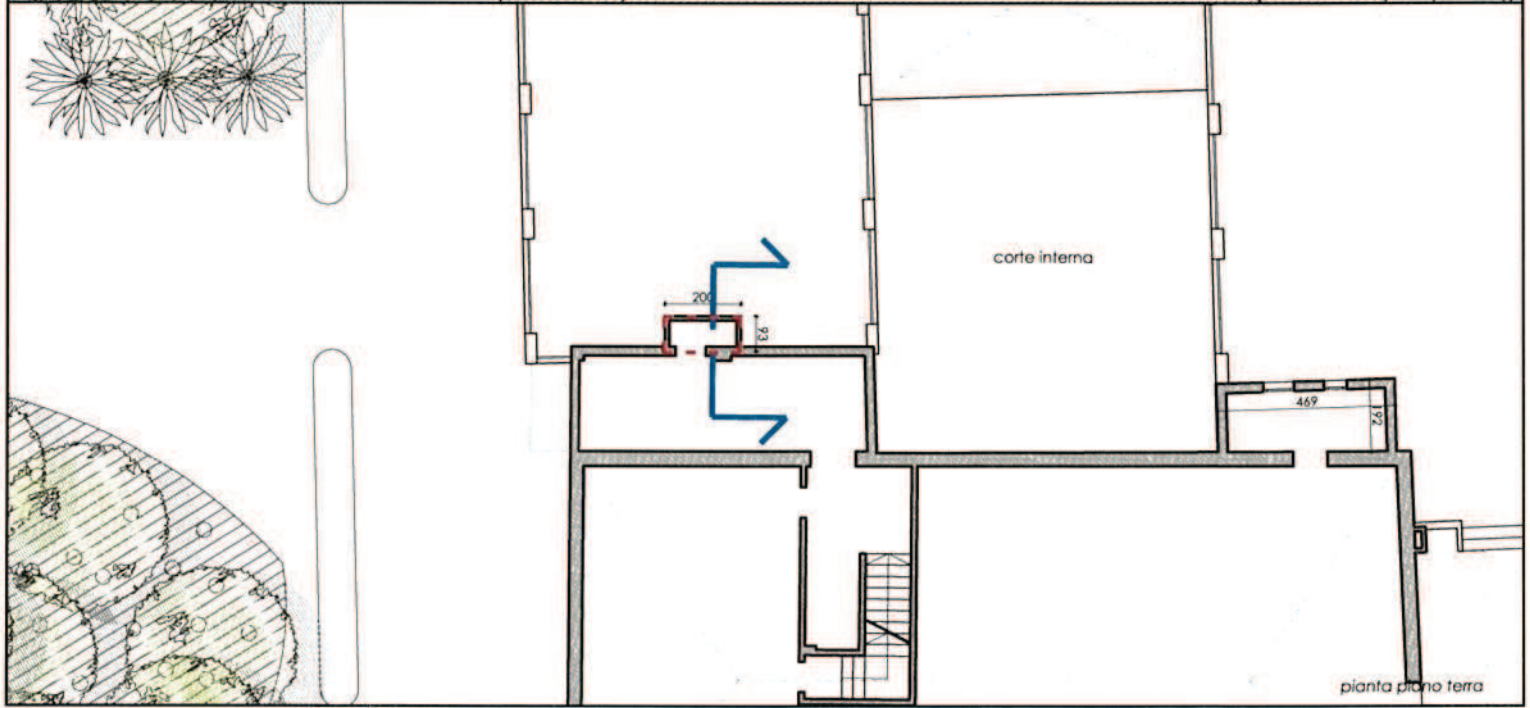
Superficie	$10,42 \times 3,48 = 36,26 \text{mq}$
Altezza media	3,81m
VOLUME	$36,26 \times 3,81 = 138,15 \text{mc}$



sezione



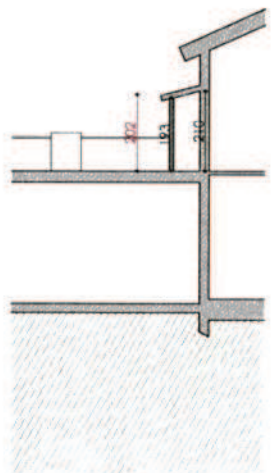
pianimetria generale



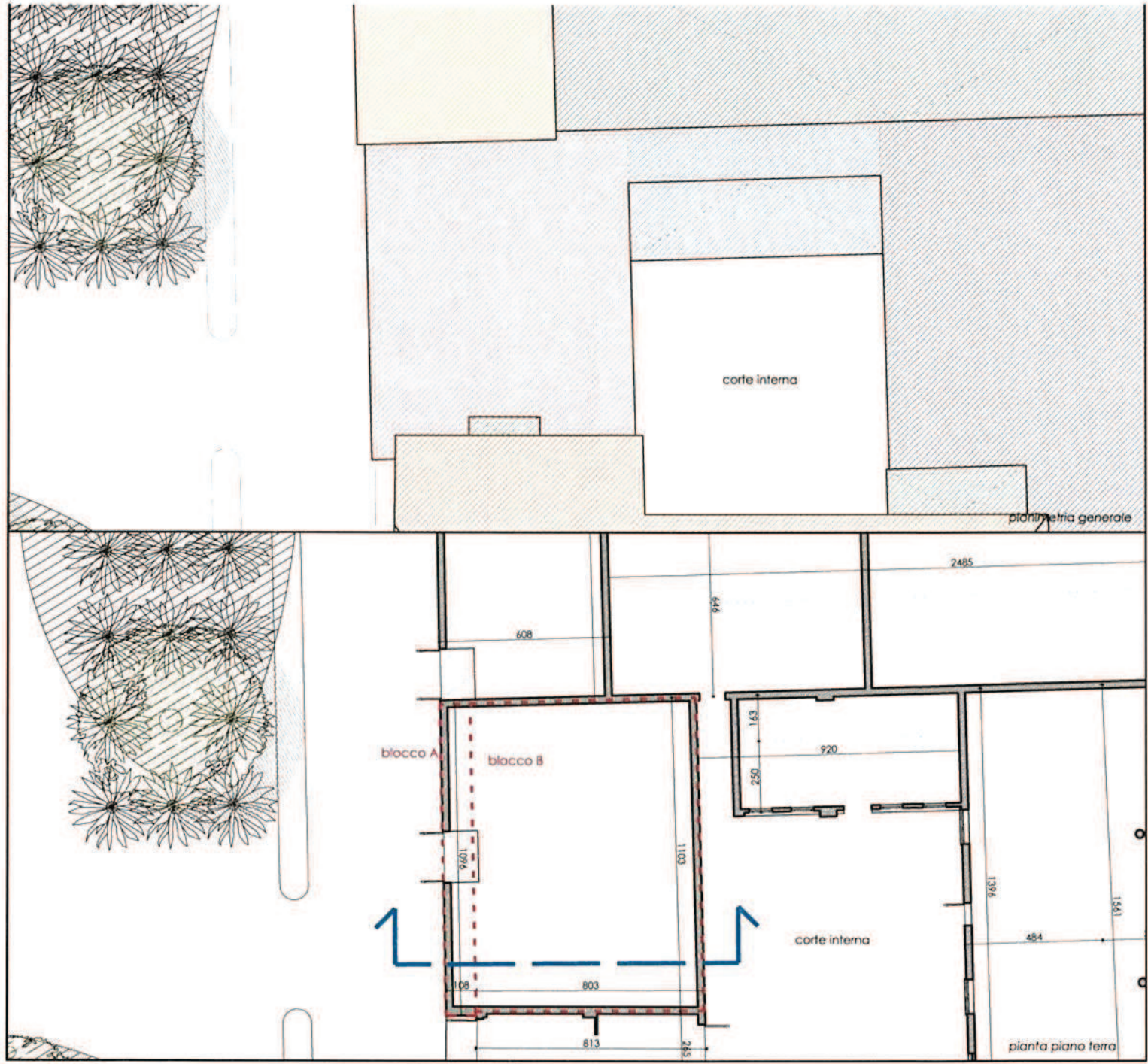
pianta piano terra

VERIFICA VOLUME

Superficie	$2,00 \times 0,93 = 1,86mq$
Altezza media	2,02m
VOLUME	$1,86 \times 2,02 = 3,76mc$

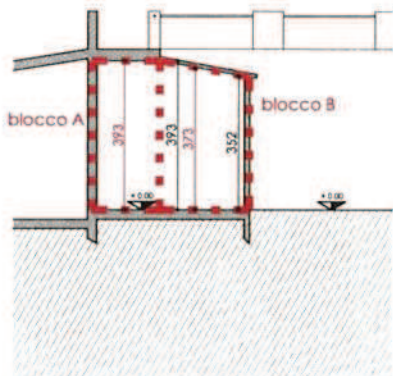
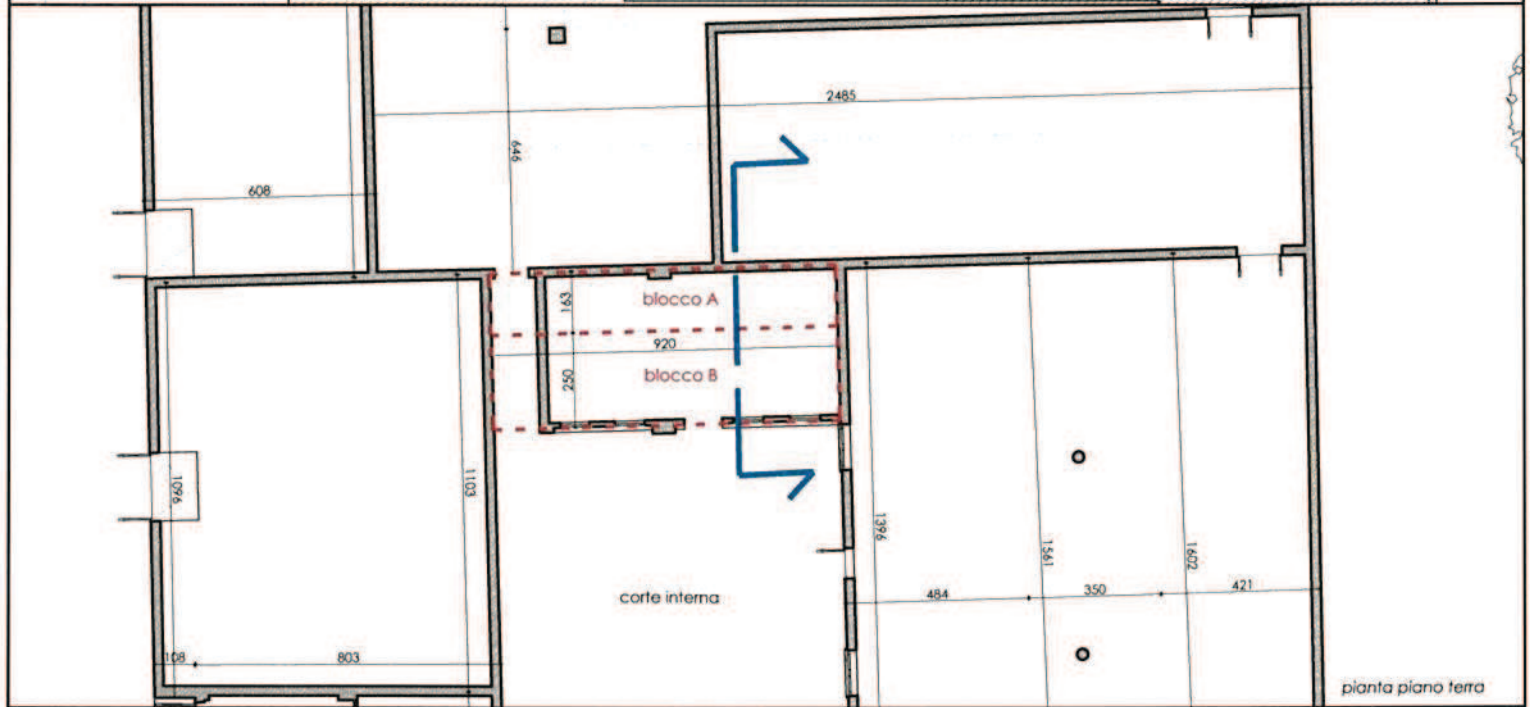
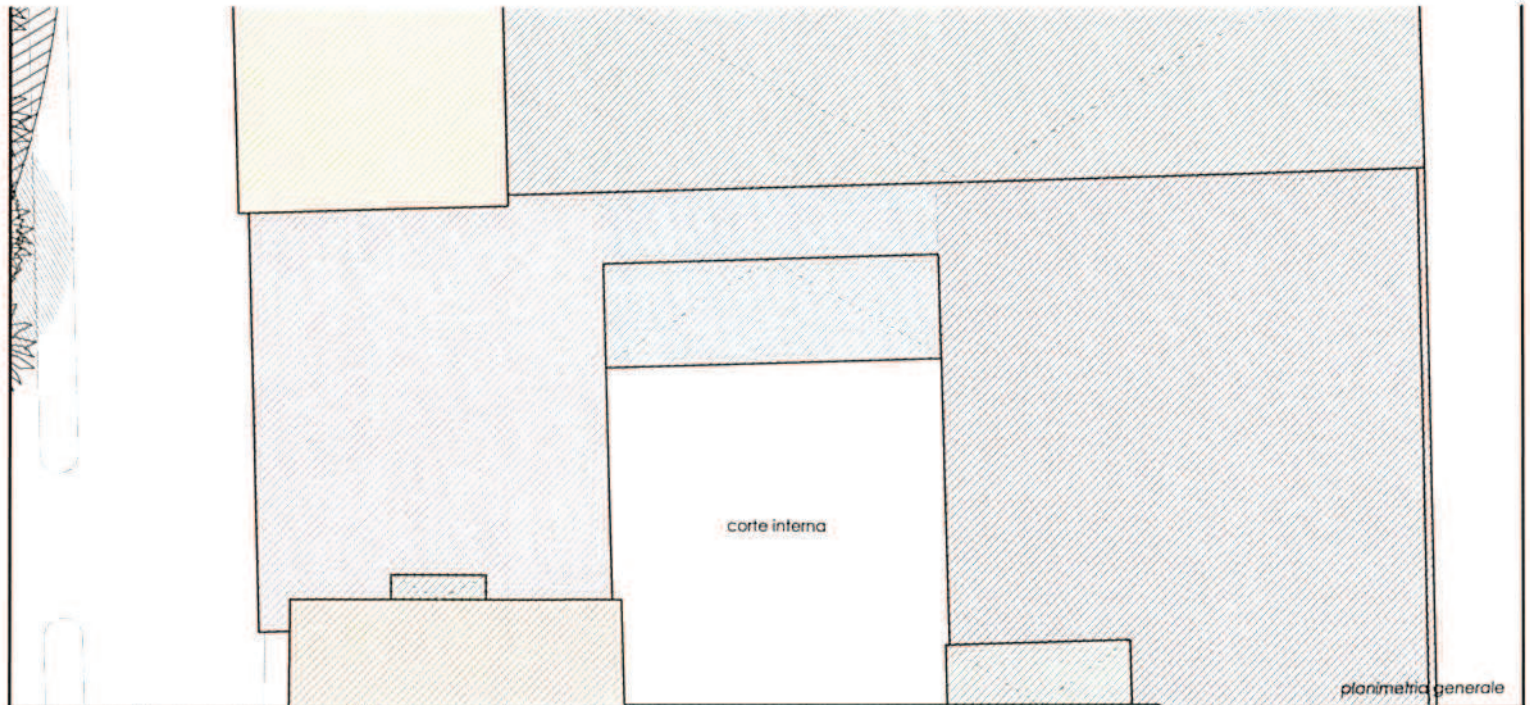


sezione



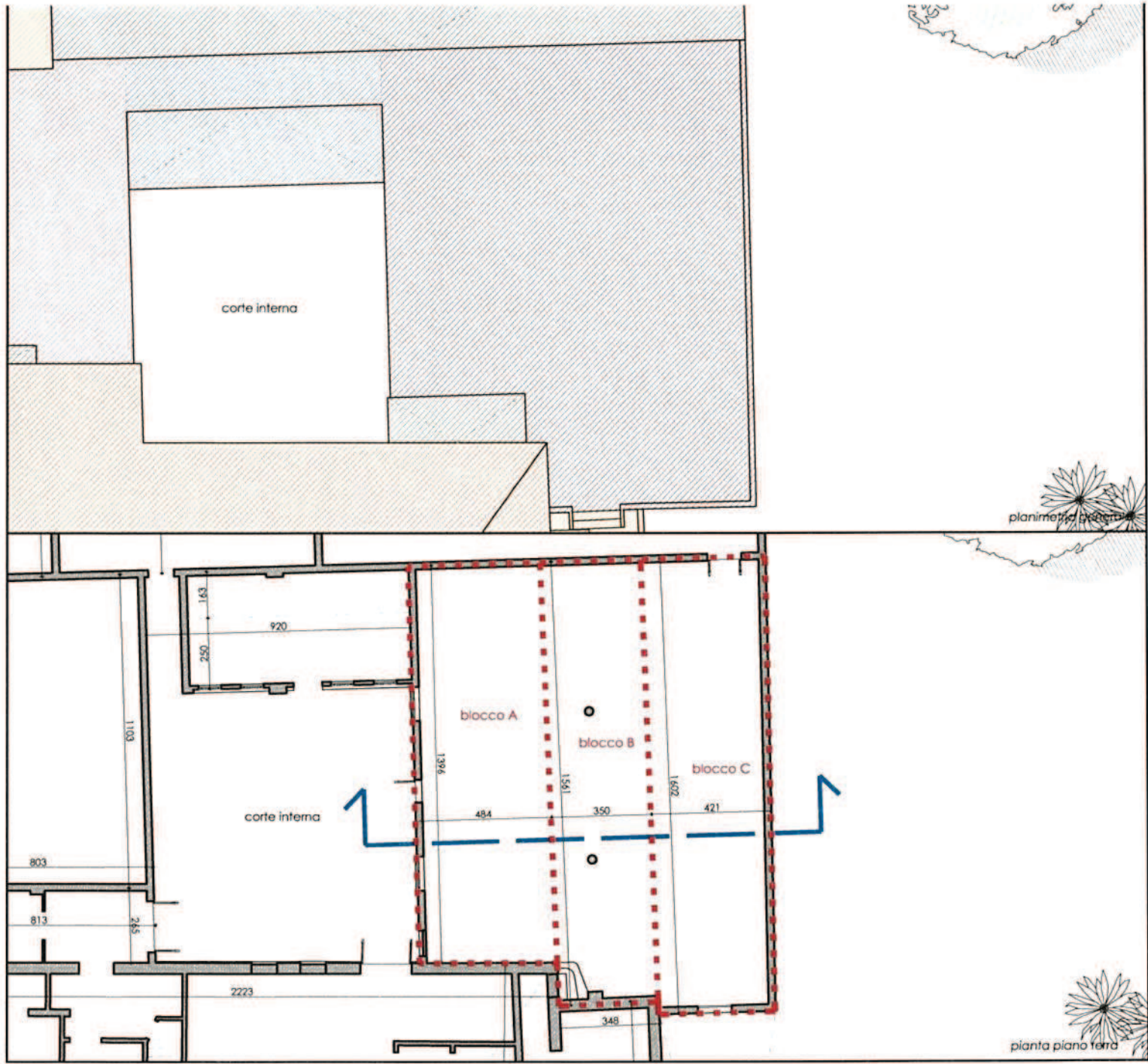
VERIFICA VOLUME

Blocco A	
Superficie	1,08x10,96 = 11,84mq
Altezza media	4,06m
VOLUME	11,84x4,06 = 48,07mc
Blocco B	
Superficie	8,03x11,03 = 88,57mq
Altezza media	4,06m
VOLUME	88,57x4,06=359,59mc
VOLUME TOTALE	48,07+359,59=407,66mc



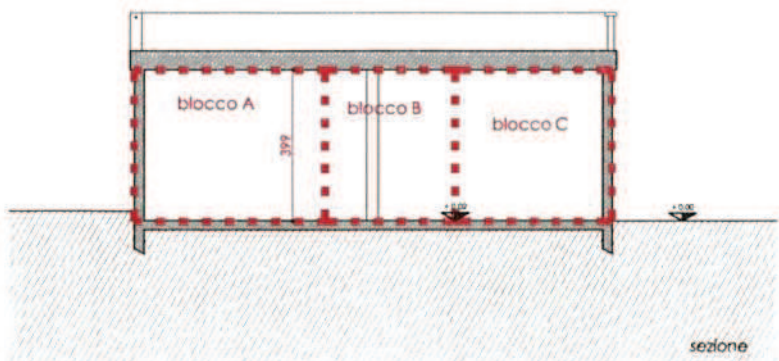
VERIFICA VOLUME

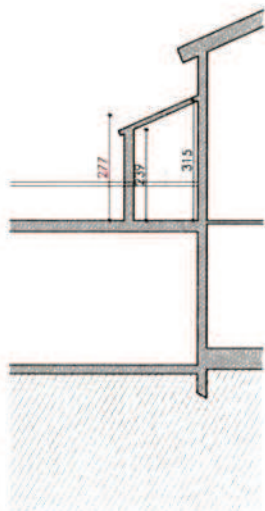
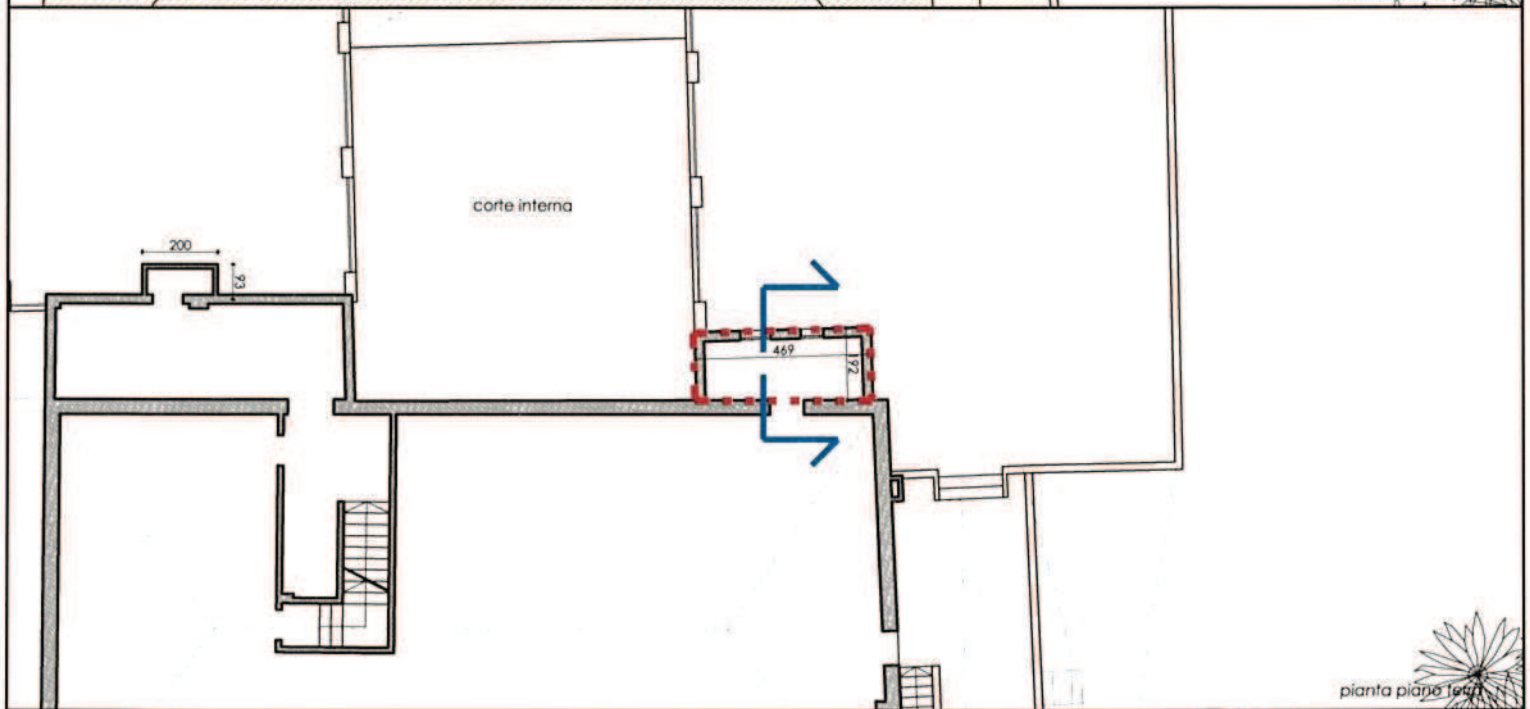
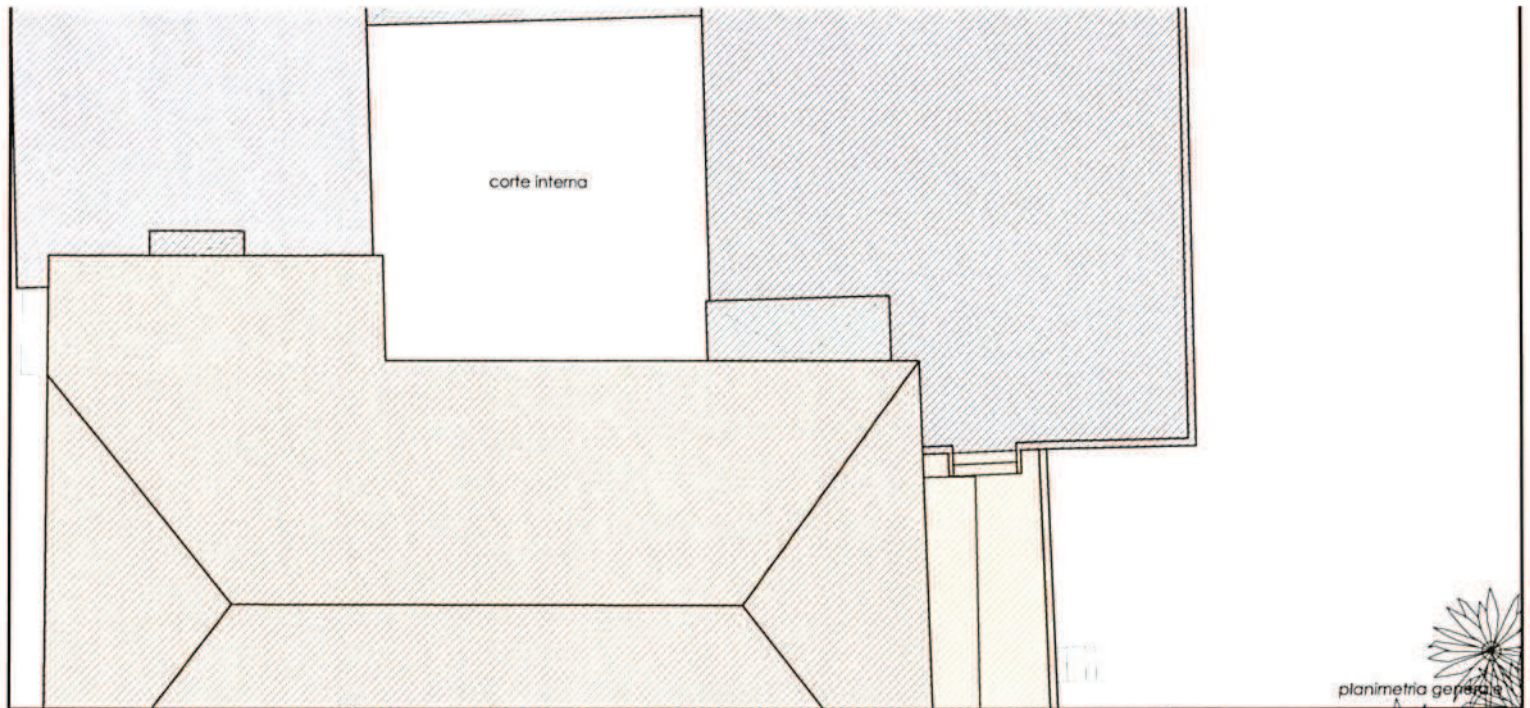
Blocco A	
Superficie	$1,63 \times 9,20 = 15,00 \text{mq}$
Altezza media	3,93m
VOLUME	$15,00 \times 3,93 = 58,95 \text{mc}$
Blocco B	
Superficie	$2,50 \times 9,20 = 23,00 \text{mq}$
Altezza media	3,73m
VOLUME	$23,00 \times 3,73 = 85,79 \text{mc}$
VOLUME TOTALE	$58,95 + 85,79 = 144,74 \text{mc}$



VERIFICA VOLUME

Blocco A	
Superficie	4,84x13,96 = 67,57mq
Altezza media	3,99m
VOLUME	67,57x3,99 = 269,60mc
Blocco B	
Superficie	3,50x15,61 = 54,64mq
Altezza media	3,99m
VOLUME	54,64x3,99=218,01mc
Blocco C	
Superficie	4,21x16,02 = 67,44mq
Altezza media	3,99m
VOLUME	67,44x3,99=269,08mc
VOLUME TOTALE	269,60+218,01+269,08=756,69mc

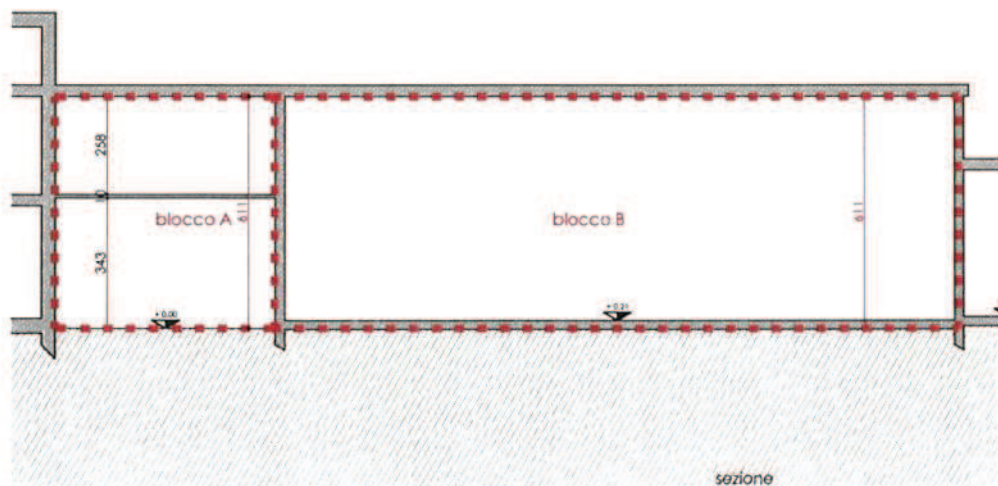
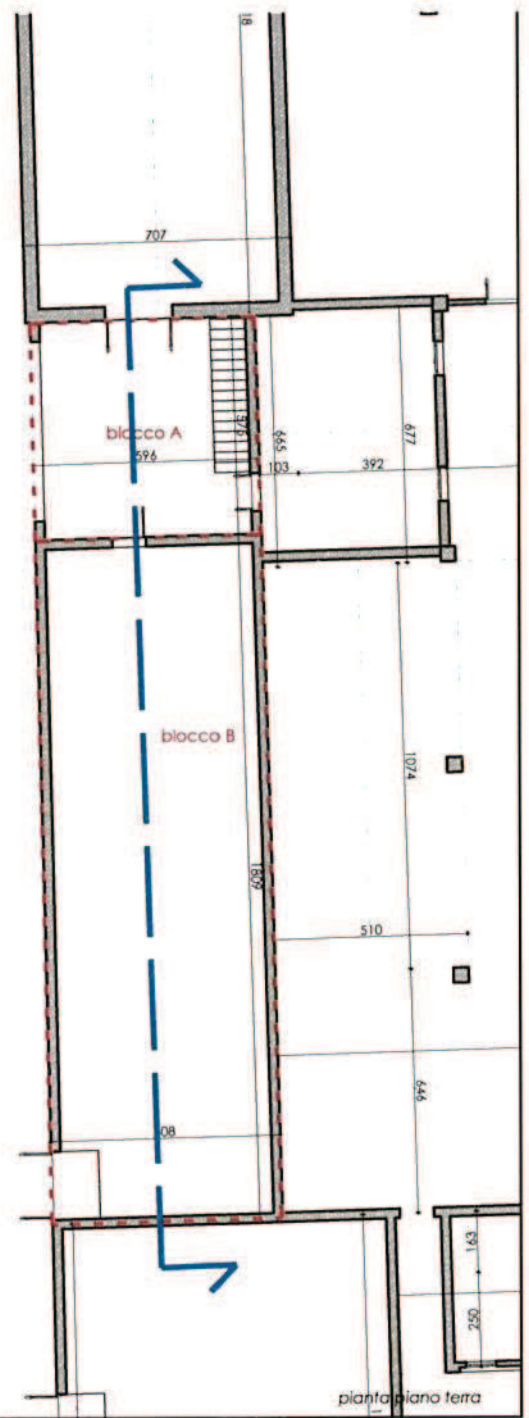
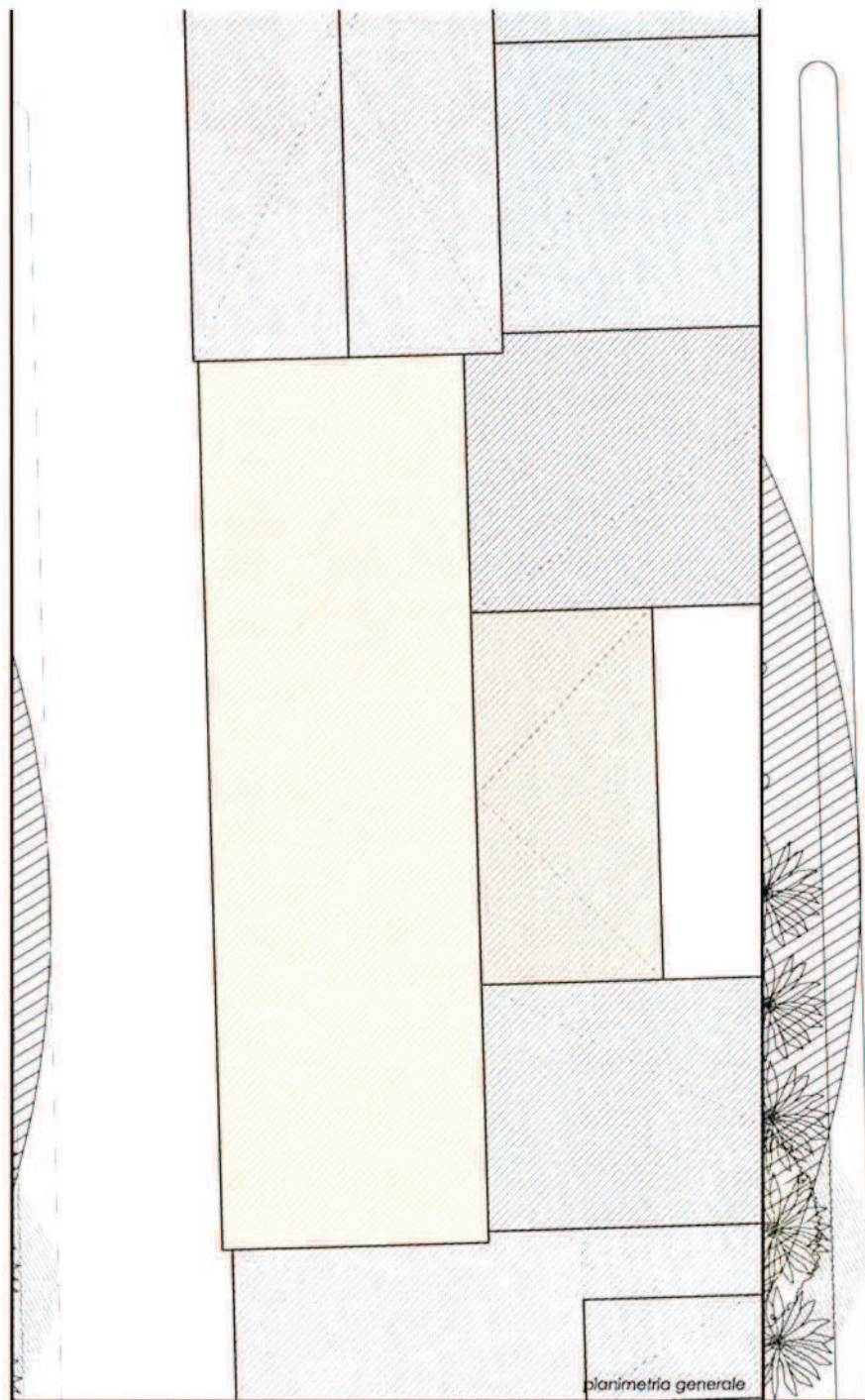




sezione

VERIFICA VOLUME

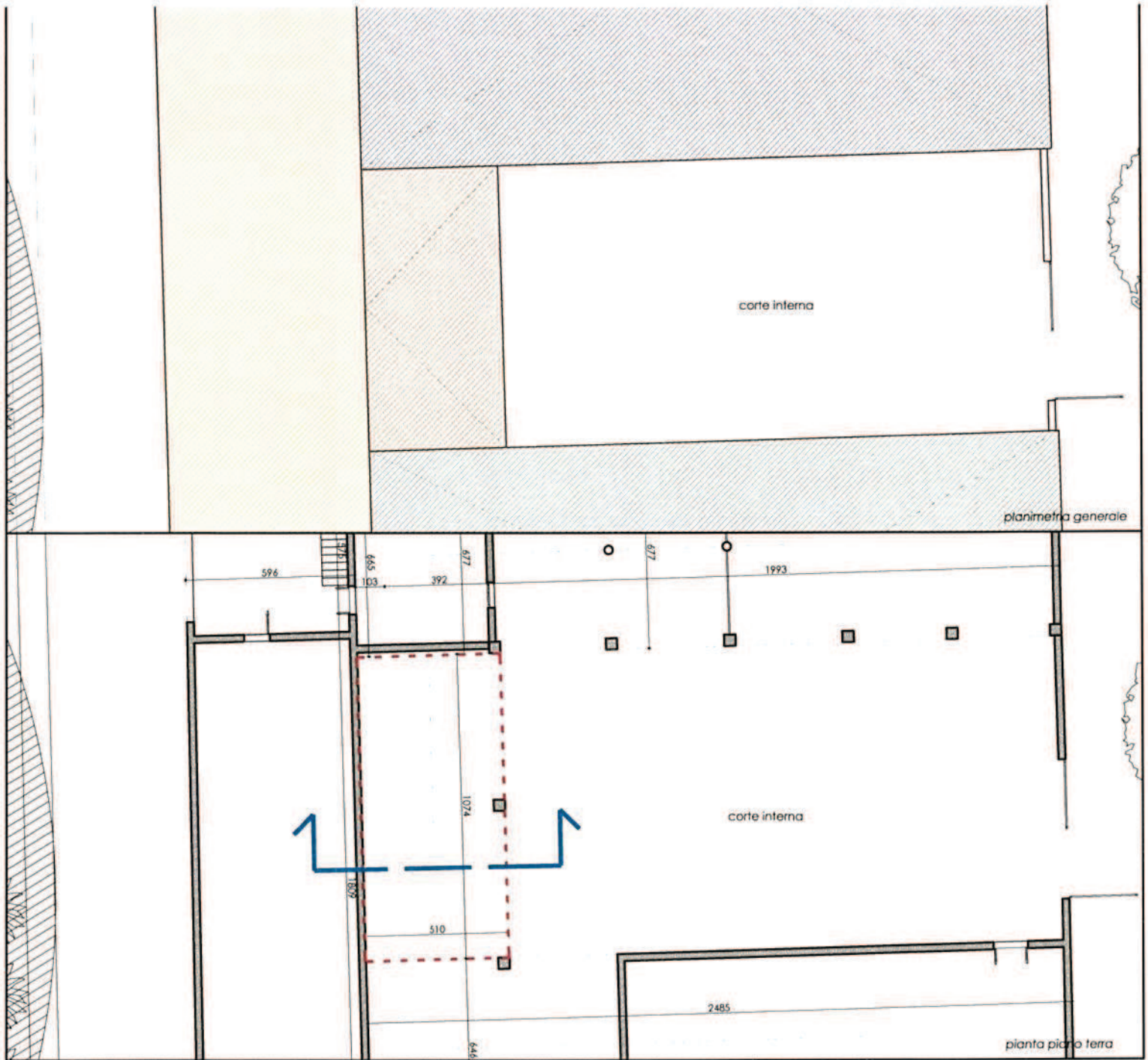
Superficie	$4,69 \times 1,92 = 9,01 \text{mq}$
Altezza media	2,77m
VOLUME	$9,01 \times 2,77 = 24,96 \text{mc}$



VERIFICA VOLUME

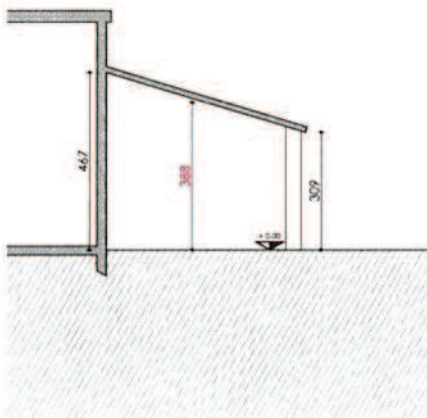
Blocco A	
Superficie	$5,96 \times 5,75 = 34,27 \text{mq}$
Altezza media	6,11m
VOLUME	$34,27 \times 6,11 = 209,39 \text{mc}$
Blocco B	
Superficie	$6,08 \times 18,09 = 109,99 \text{mq}$
Altezza media	6,11m
VOLUME	$109,99 \times 6,11 = 672,03 \text{mc}$
VOLUME TOTALE	$209,39 + 672,03 = 881,42 \text{mc}$

fabbricato n. 8 - scala 1:200

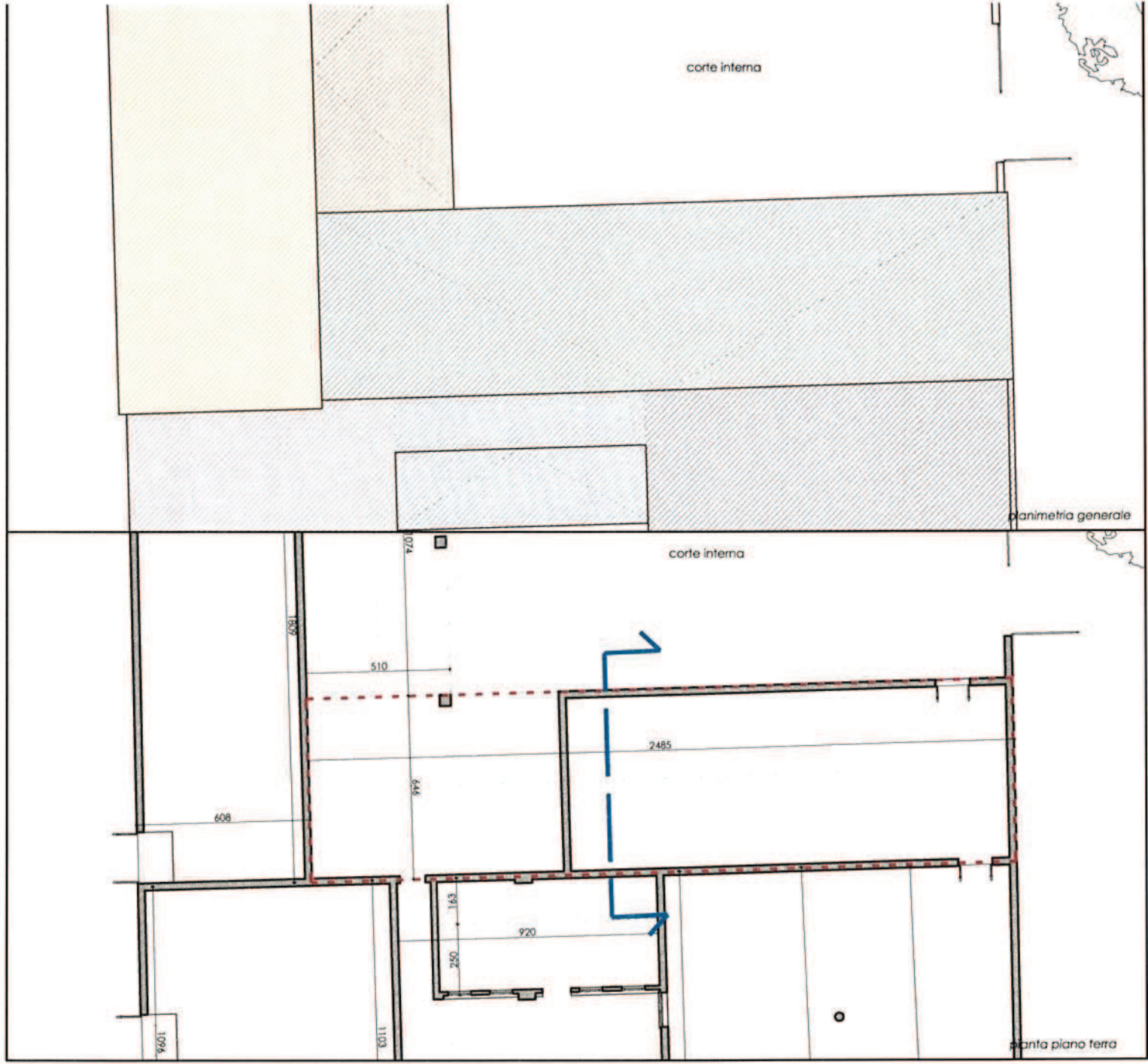


VERIFICA VOLUME

Superficie	$5,10 \times 10,74 = 54,77 \text{mq}$
Altezza media	3,88m
VOLUME	$54,77 \times 3,88 = 212,51 \text{mc}$

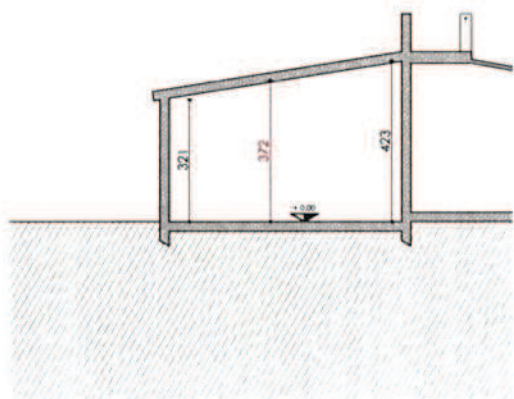


sezione



VERIFICA VOLUME

Superficie	$6,46 \times 24,85 = 160,53 \text{mq}$
Altezza media	3,72m
VOLUME	$160,53 \times 3,72 = 597,17 \text{mc}$

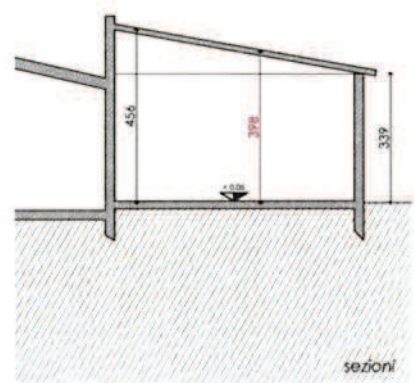
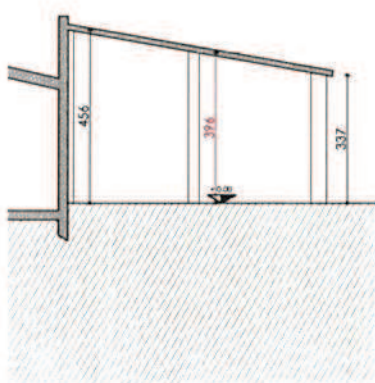


sezione



VERIFICA VOLUME

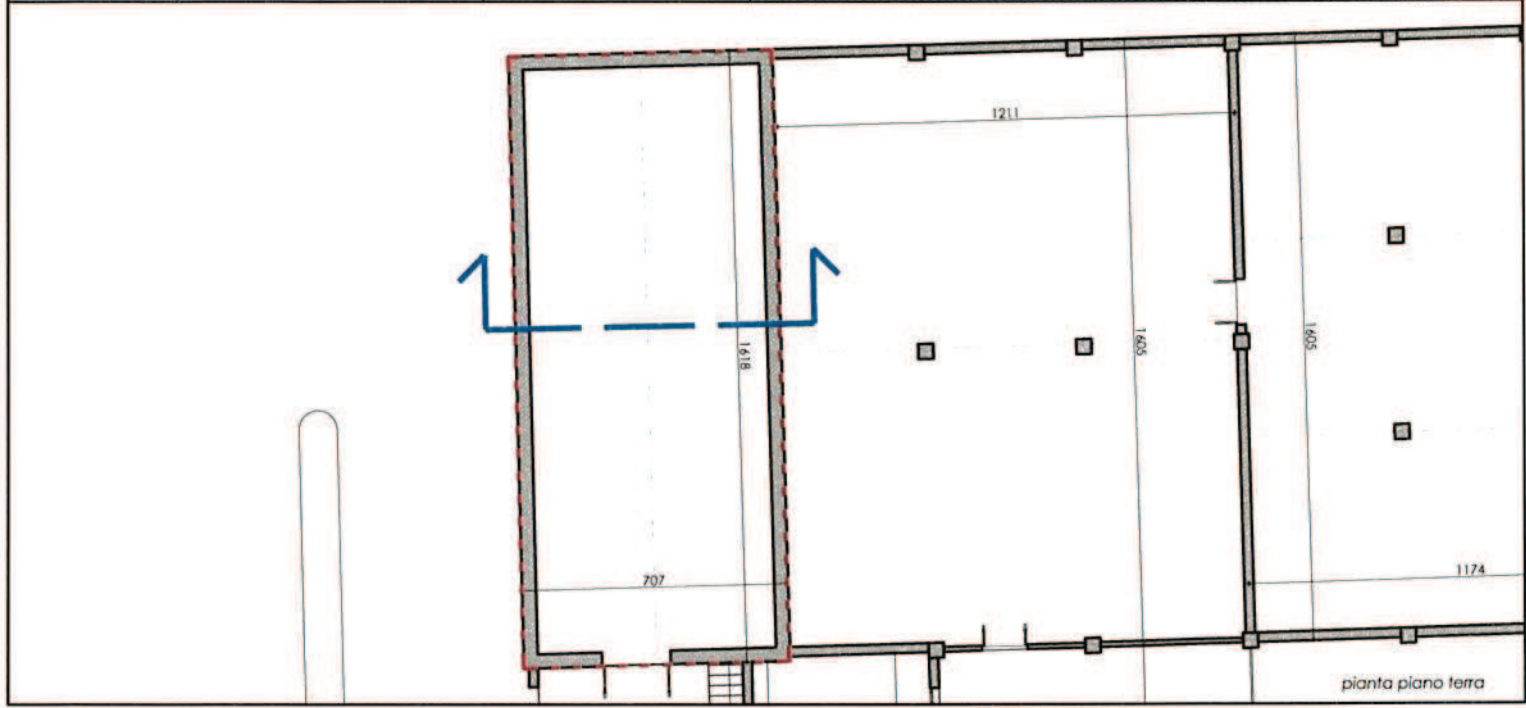
Blocco A	
Superficie	$6,55 \times 1,03 = 6,75 \text{mq}$
Altezza media	3,98m
VOLUME	$6,75 \times 3,98 = 26,86 \text{mc}$
Blocco B	
Superficie	$3,92 \times 6,77 = 26,54 \text{mq}$
Altezza media	3,98m
VOLUME	$26,54 \times 3,98 = 105,62 \text{mc}$
Blocco C	
Superficie	$6,77 \times 19,93 = 134,93 \text{mq}$
Altezza media	3,96m
VOLUME	$134,93 \times 3,96 = 534,32 \text{mc}$
VOLUME TOTALE	$26,96 + 105,62 + 534,32 = 666,90 \text{mc}$



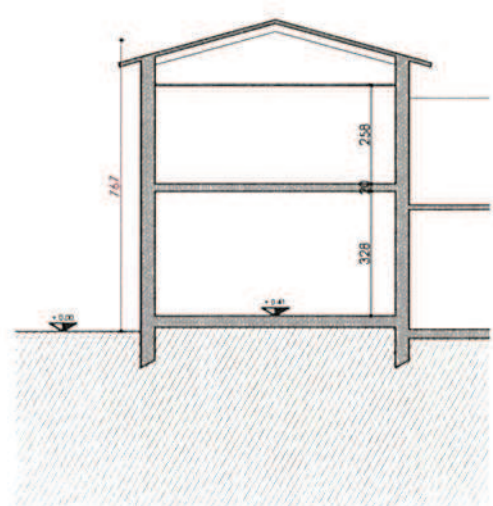
sezioni



planimetria generale



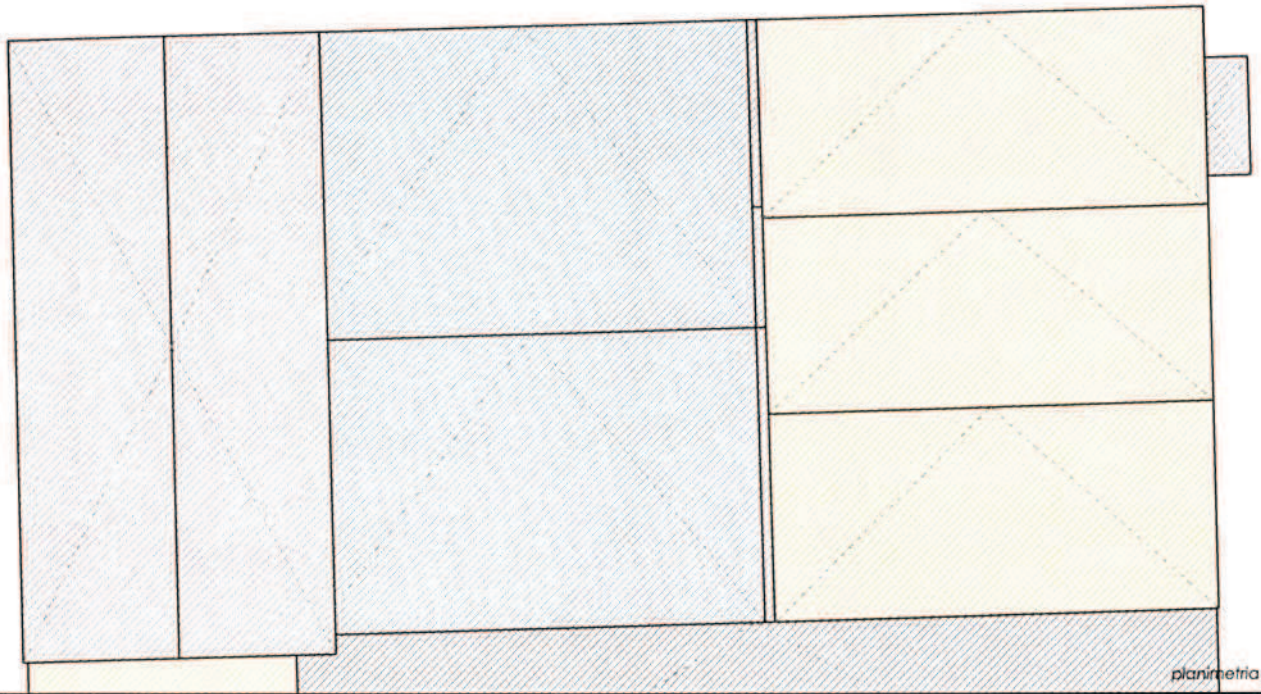
pianta piano terra



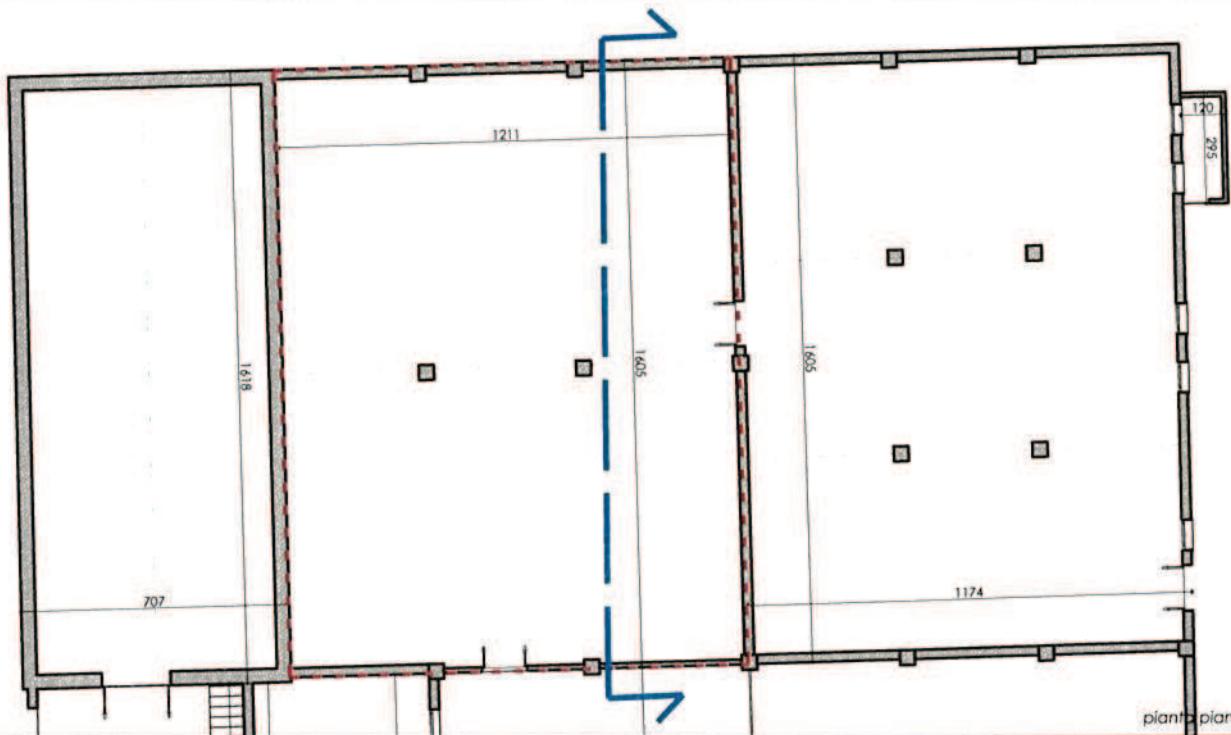
sezione

VERIFICA VOLUME

Superficie	$7,07 \times 16,18 = 114,45 \text{mq}$
Altezza media	7,67m
VOLUME	$114,45 \times 7,67 = 877,83 \text{mc}$



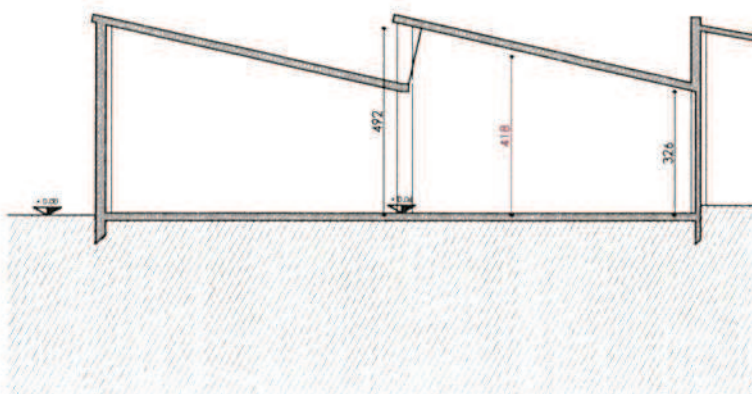
planimetria generale



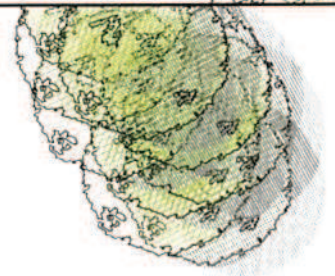
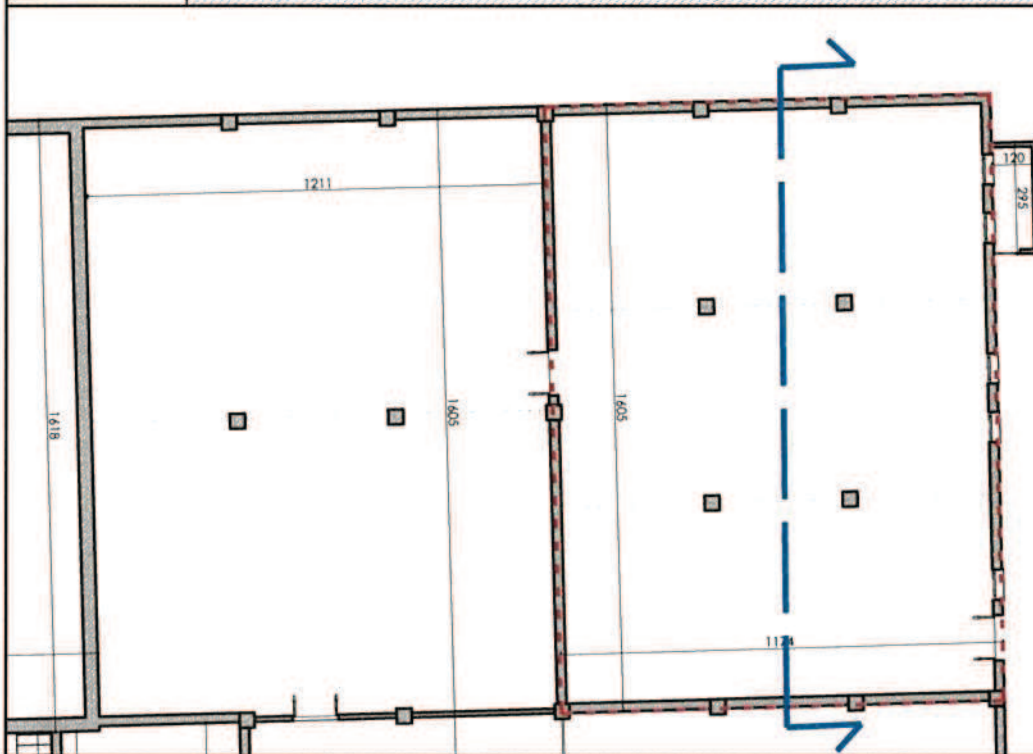
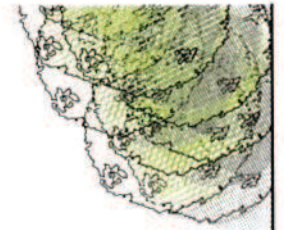
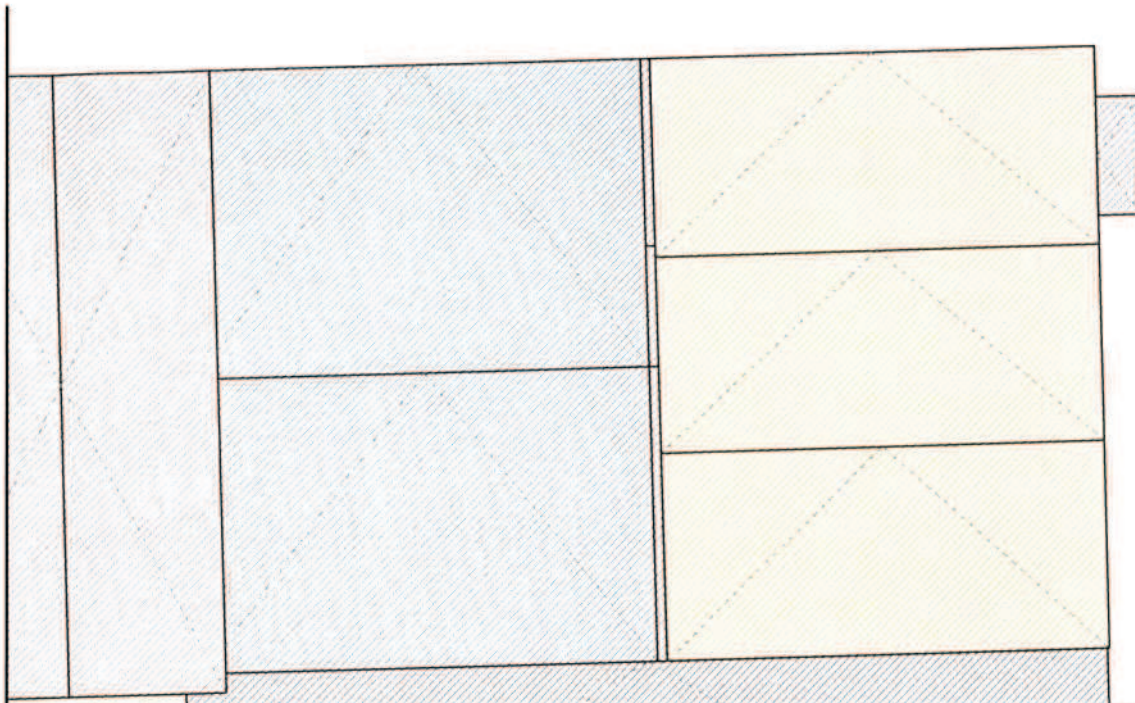
piano piano terra

VERIFICA VOLUME

Superficie	$12,11 \times 16,05 = 194,37 \text{mq}$
Altezza media	4,18m
VOLUME	$194,37 \times 4,18 = 812,46 \text{mc}$

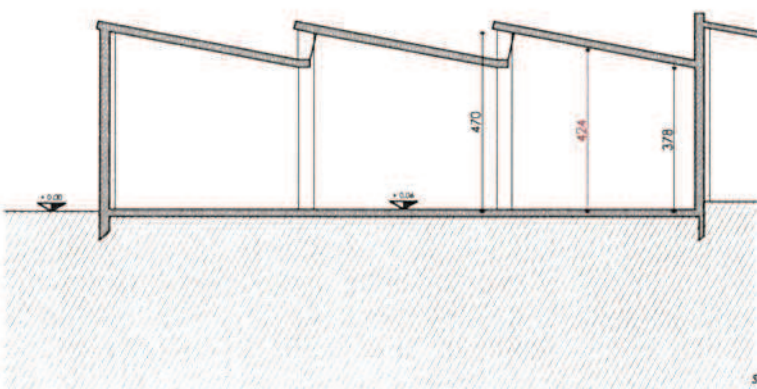


sezione

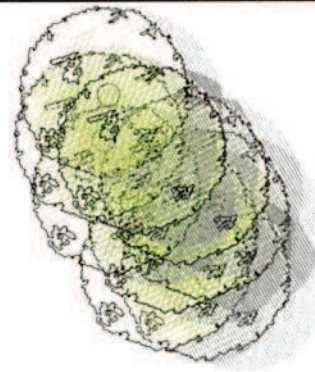
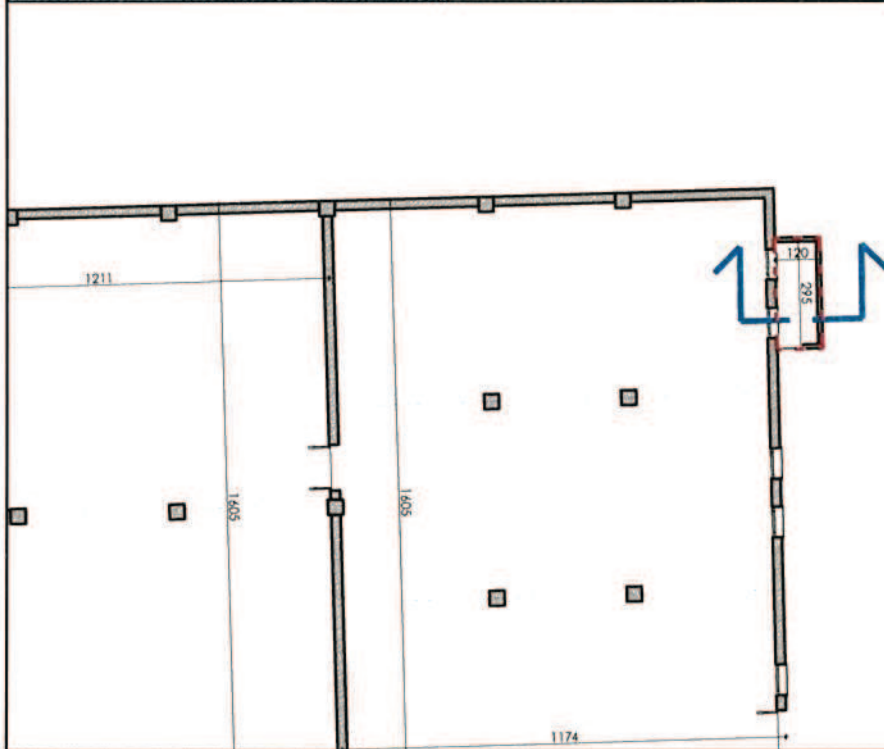
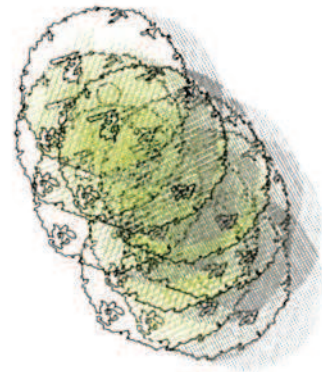
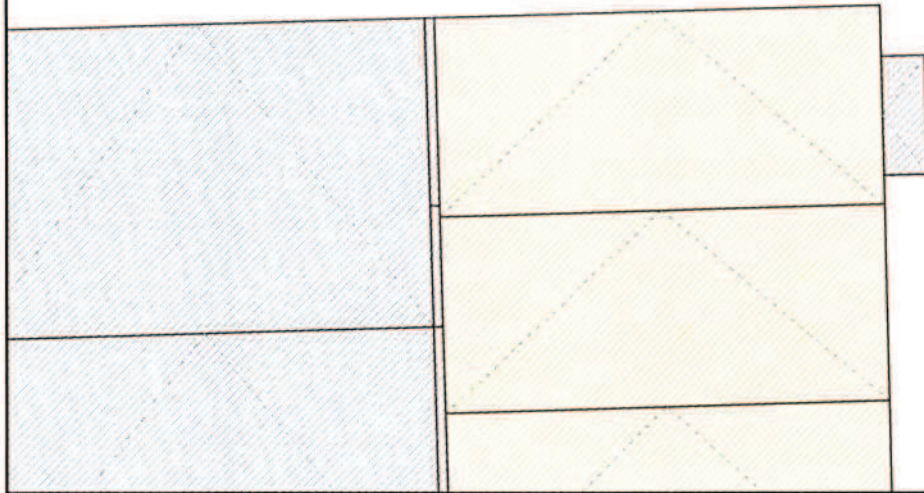


VERIFICA VOLUME

Superficie	$11,74 \times 16,05 = 188,43 \text{mq}$
Altezza media	4,24m
VOLUME	$188,43 \times 4,24 = 798,94 \text{mc}$

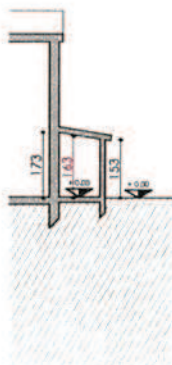


sezione



VERIFICA VOLUME

Superficie	$1,2 \times 2,95 = 3,54mq$
Altezza media	1,63m
VOLUME	$3,54 \times 1,63 = 5,77mc$



sezione

RIEPILOGO VOLUMI

<i>Fabbricato n. 1</i>	<i>2,567,88mc</i>
<i>Fabbricato n. 2</i>	<i>138,15mc</i>
<i>Fabbricato n. 3</i>	<i>3,76mc</i>
<i>Fabbricato n. 4</i>	<i>407,66mc</i>
<i>Fabbricato n. 5</i>	<i>144,74mc</i>
<i>Fabbricato n. 6</i>	<i>756,69mc</i>
<i>Fabbricato n. 7</i>	<i>24,96mc</i>
<i>Fabbricato n. 8</i>	<i>881,42mc</i>
<i>Fabbricato n. 9</i>	<i>212,51mc</i>
<i>Fabbricato n. 10</i>	<i>597,17mc</i>
<i>Fabbricato n. 11</i>	<i>666,90mc</i>
<i>Fabbricato n. 12</i>	<i>877,83mc</i>
<i>Fabbricato n. 13</i>	<i>812,46mc</i>
<i>Fabbricato n. 14</i>	<i>798,94mc</i>
<i>Fabbricato n. 15</i>	<i>5,77mc</i>
VOLUME TOTALE	8.896,84mc