



COMUNE DI PADOVA  
AREA LL.PP.

Settore Edilizia Pubblica e Impianti Sportivi

ELENCO ANNUALE ANNO 2017  
PROGETTO ESECUTIVO  
TEATRO VERDI  
RESTAURO DELLE FACCIATE SUD - EST  
E DELLA STATUARIA SOMMITALE

IMPORTO COMPLESSIVO: € 150.000,00

N° Progetto	CCP	Elaborato	12	
Nome File	LLPP	STADIO PATTO		
Data	EDP 2016/044	DOCUMENTAZIONE FOTOGRAFICA		
Progettisti	Rup	CAPITOLI (OR. CV - C10 - C11 - C12)		
Arch. Domenico La Russa	Arch. Domenico La Russa	Capo Settore	Capo Area	
Arch. Fiamma Pavesi				
Arch. Fabio Fozzo				



C9.1



C10.1



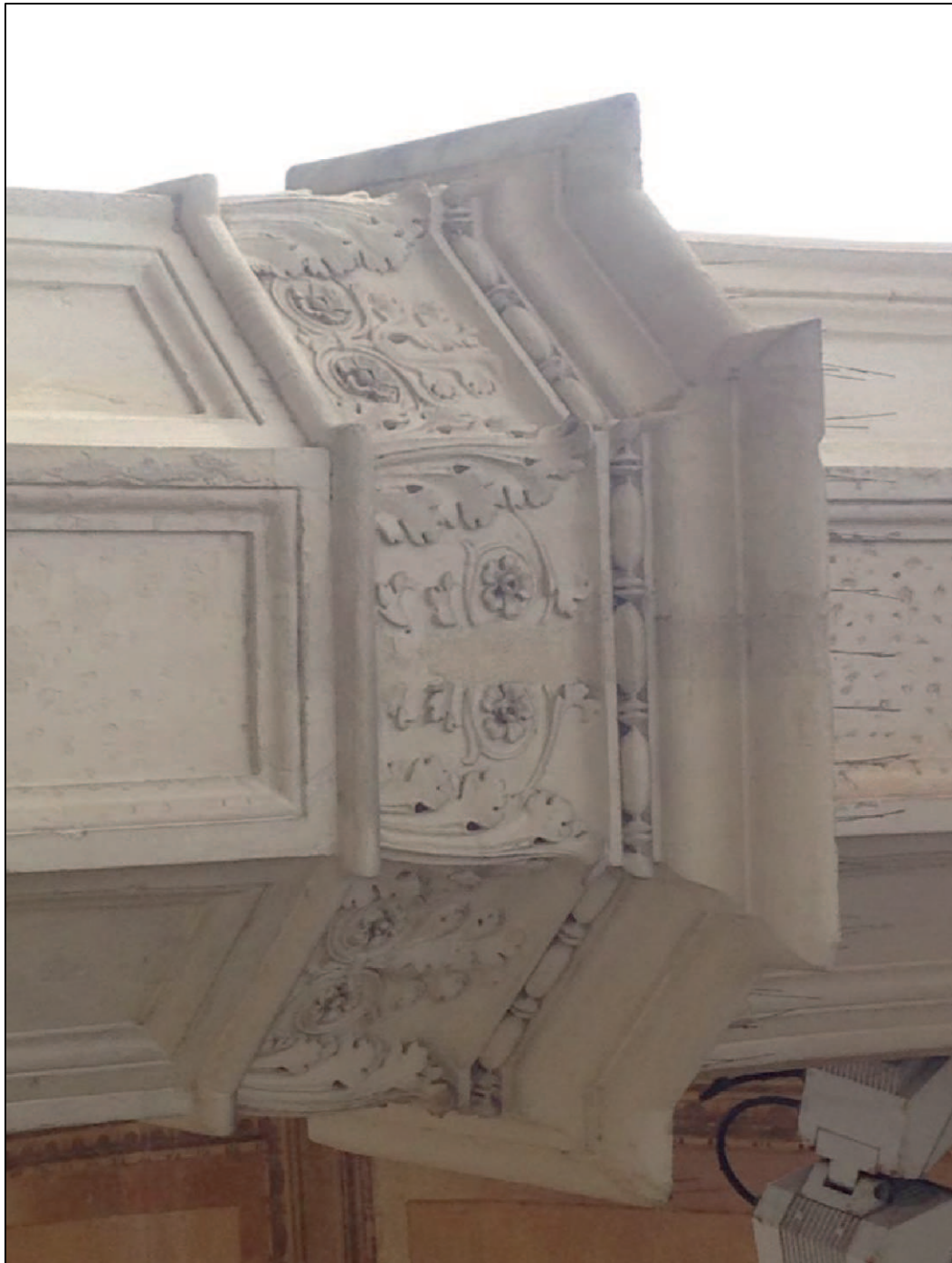
C11.1



C12.1



C9.2



C10.2



C11.2



C12.2



C9.3



C10.3



C11.3



C12.3



C9.4



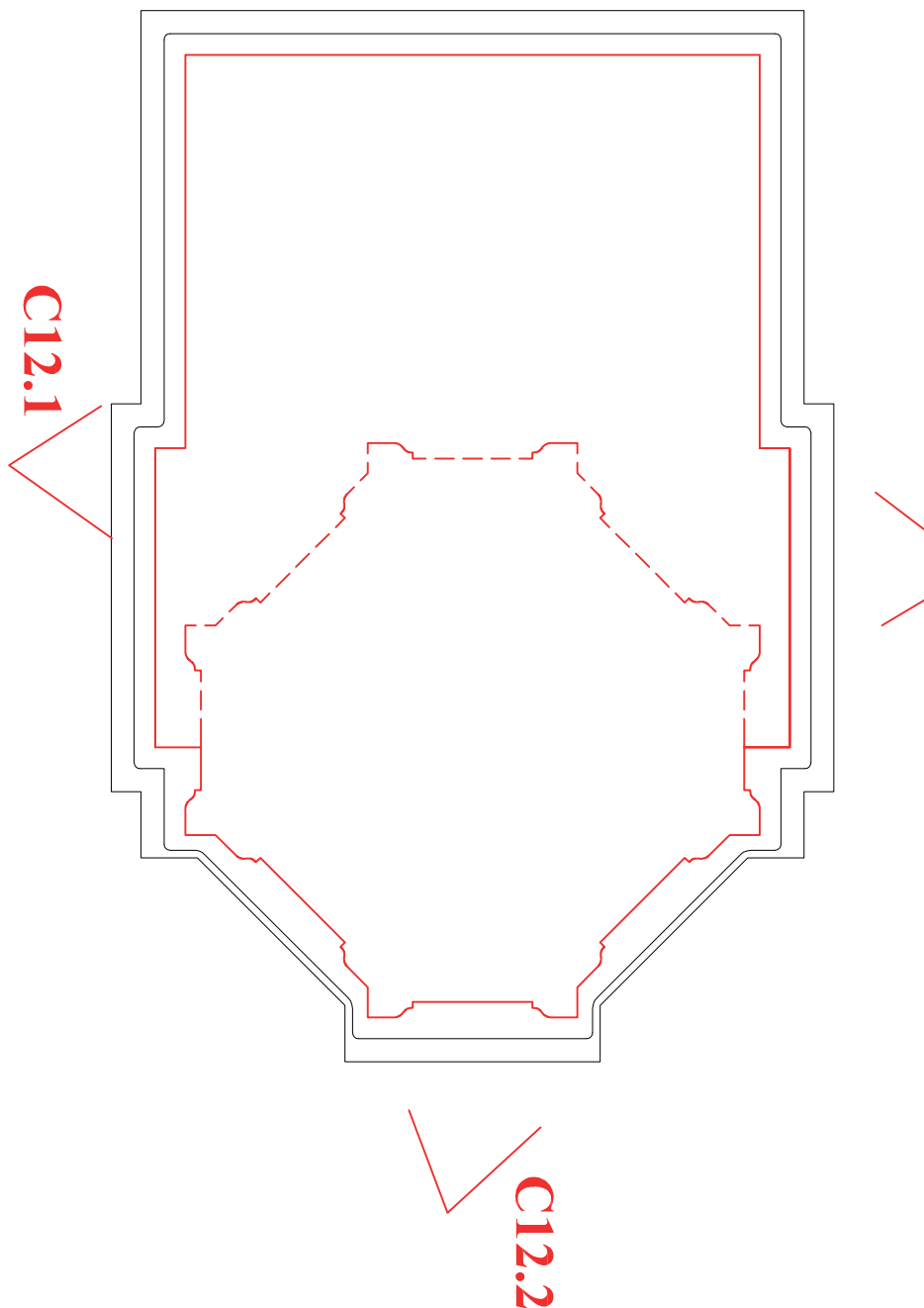
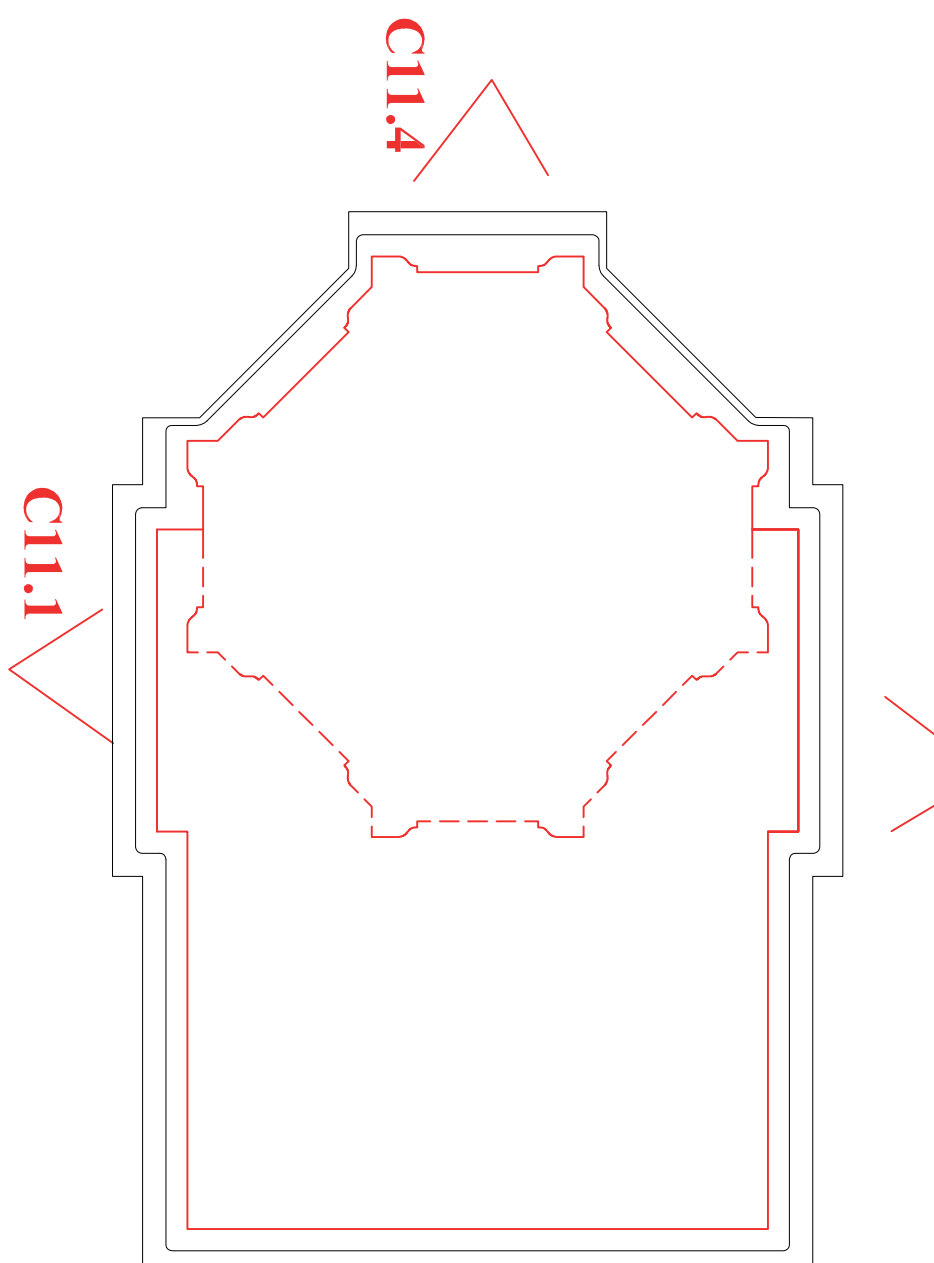
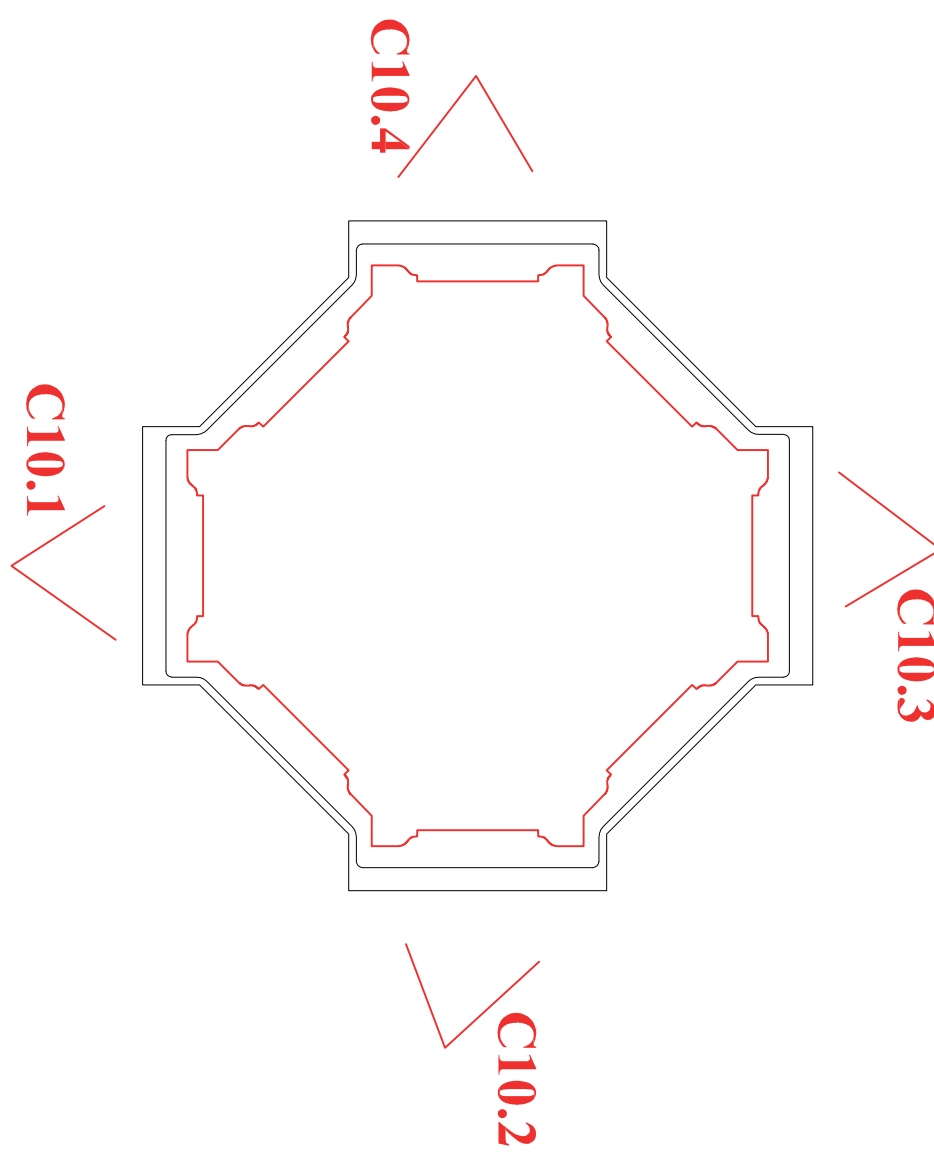
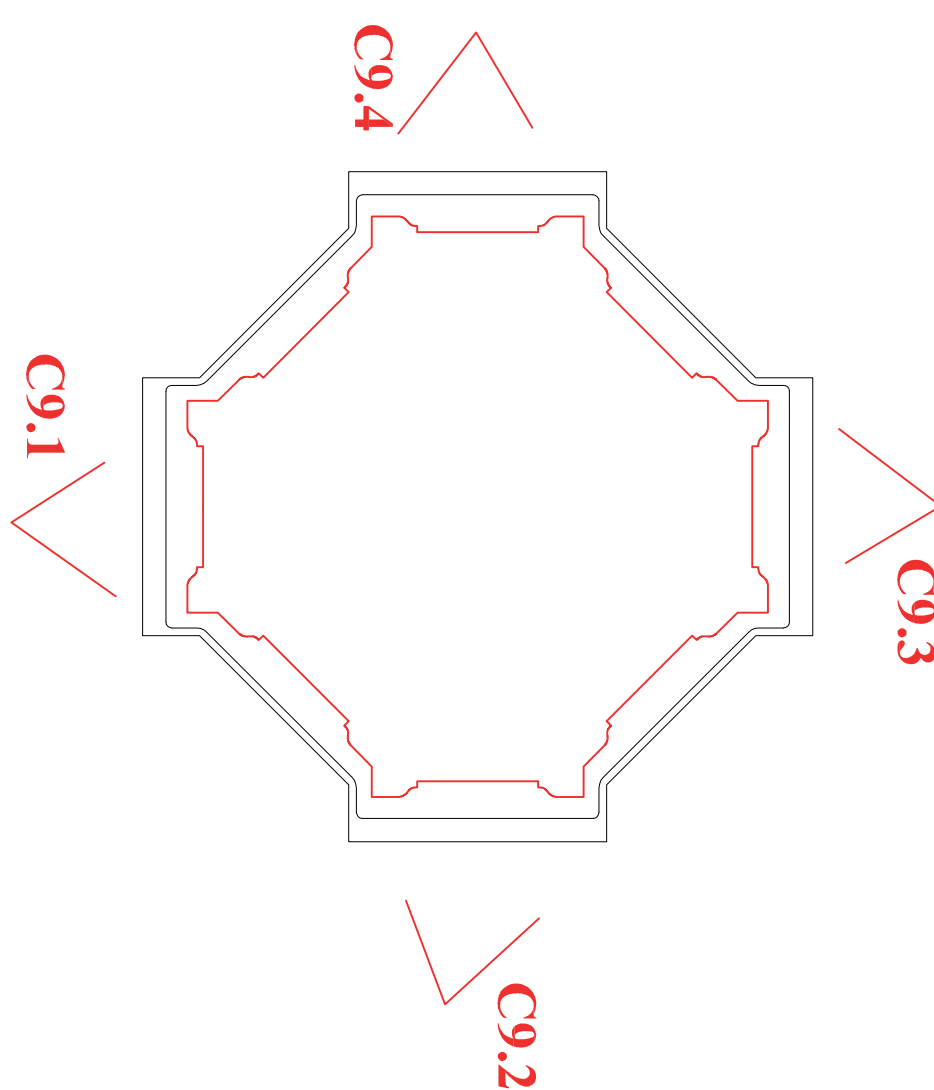
C10.4



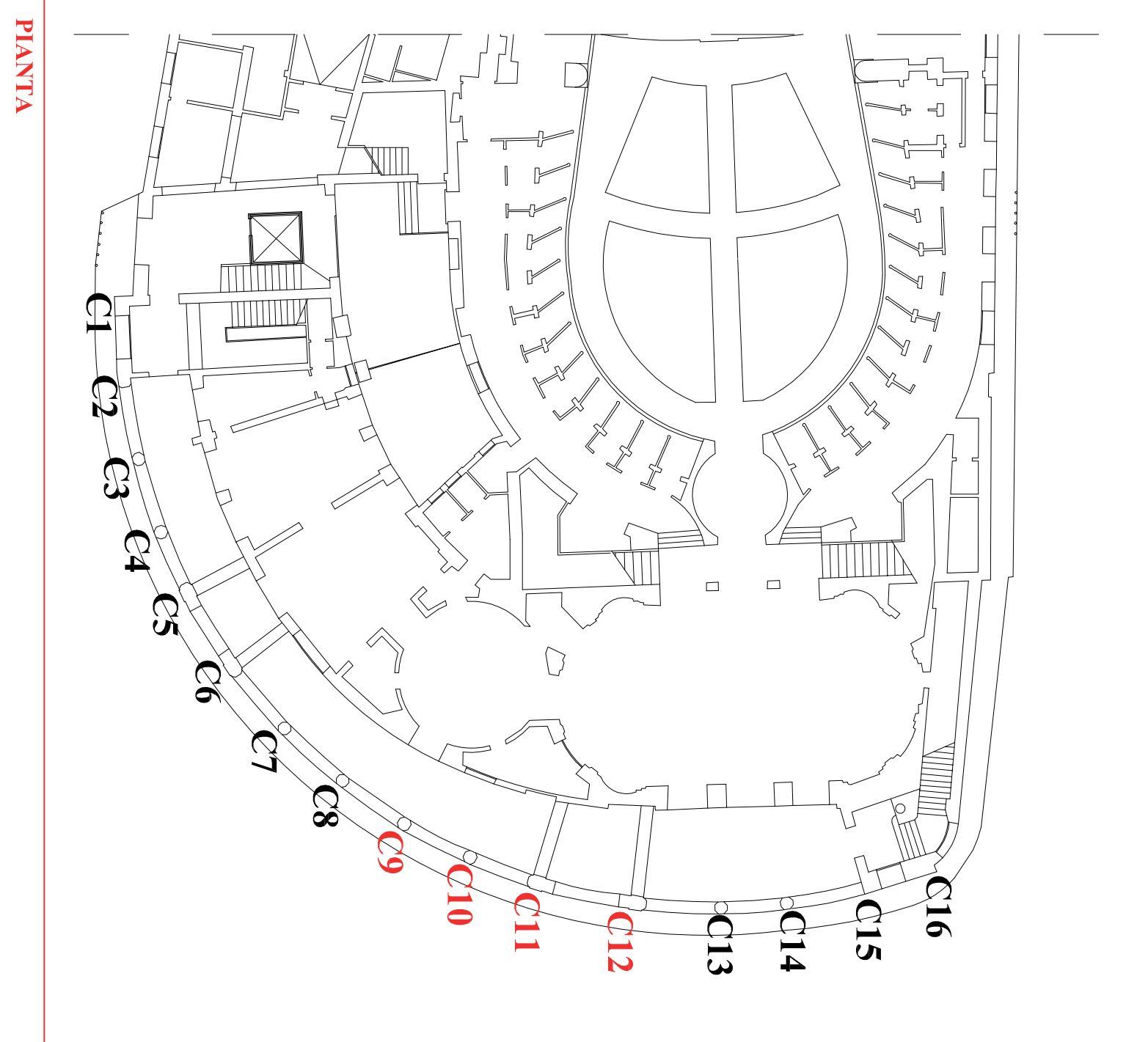
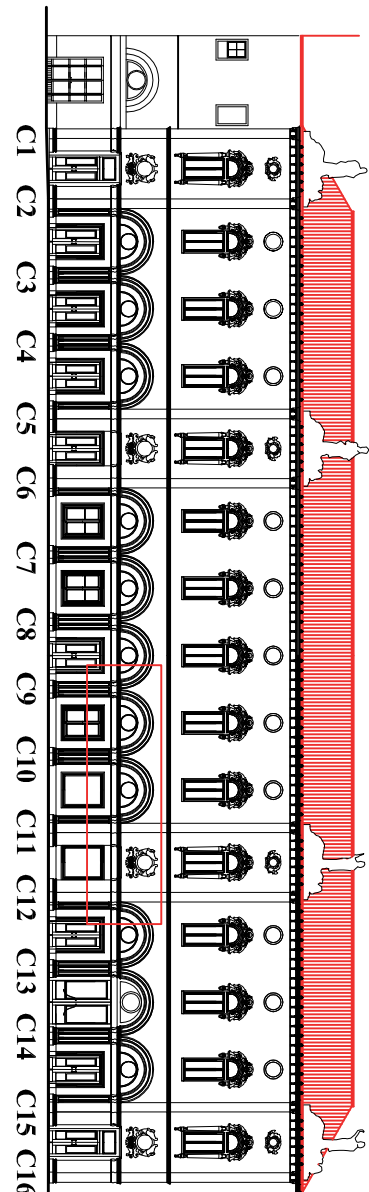
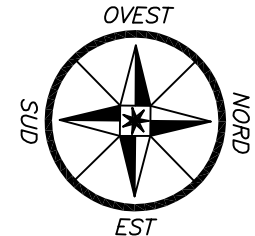
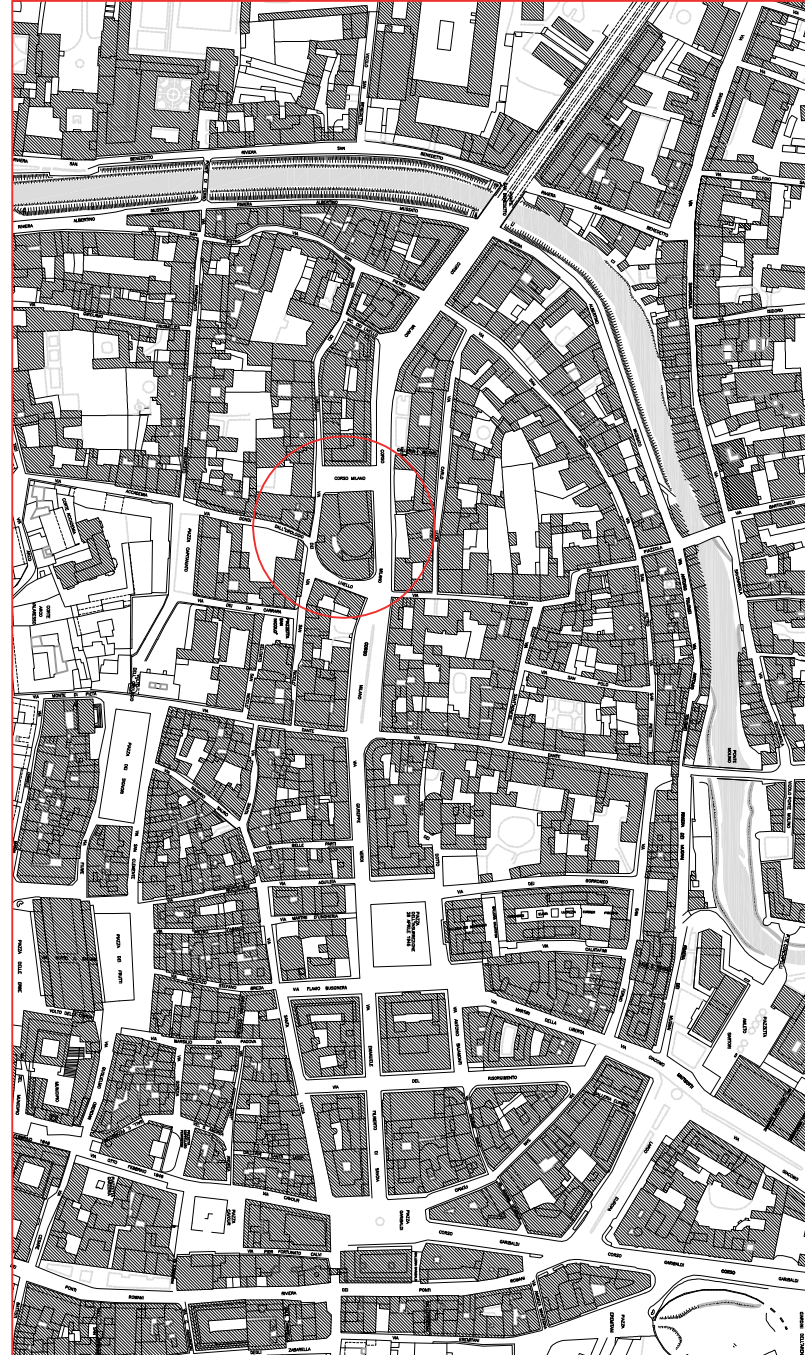
C11.4



C12.4



Estratto CTR



Pianta